



Embroidery Software Partners

ZSK Stickmaschinen GmbH

Magdeburger Str. 38-40
D-47800 Krefeld
Tel: +49 (0) 2151 – 44 40
Fax: +49 (0) 2151 – 44 41 70

atelier@zsk.de
www.zsk.com

EPCwin
Software for multi-head
and schiffli embroidery

ZSK **GiS**
Embroidery Software Partners

Installation / Update

Terms of license

EPCwin is to be used only on a single computer. Reproduction, hire and passing on are prohibited. Within the framework of the statutory provisions, no more extensive guarantees or warranties are granted. Your use of EPCwin constitutes acceptance of these terms of license.

What do I wish to do?

- I wish to install EPCwin → Page 2
- I wish to update to EPCwin 3.x → Page 4
Note: updating from Version 1.x/2.x to Version 3.x is subject to a charge. You need new passwords for Version 3.x. You can download the passwords from atelier@zsk.de. DEMO days installed with Version 1.x/2.x are retained and do not expire.
- Connect the WIBU dongle → Page 6
- Configure the mouse → Page 6
- I wish to uninstall EPCwin → Page 6
- I wish to select the language and enter the Product ID → Page 7
- I wish to enter temporary passwords (DEMO) → Page 8
- I wish to enter permanent passwords → Page 10

Please read the following note!

Windows user rights for the installation

The EPCwin Software as well as the WIBU-KEY Security software must be installed by an operator with administrations rights.

Windows user rights for the operation of the EPCwin

The user account of the computer must have full Write – and Read authorisations for the EPCwin and EPCwinData folders.

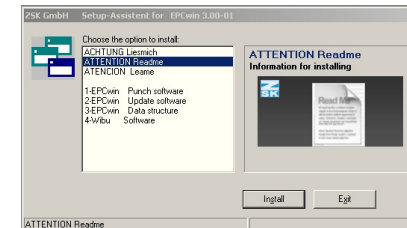
Installing EPCwin

Switch on the computer without connecting the supplied WIBU dongle.

Insert the EPCwin program CD.

The EPCwin setup assistant starts automatically. If it fails to start, initiate the program [*CD-ROM:\InstManager\Setup.exe*] or double-click <Left><Left> on the CD-ROM symbol.

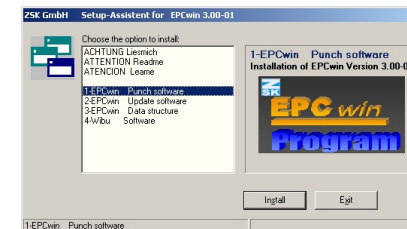
The EPCwin setup assistant appears on the screen



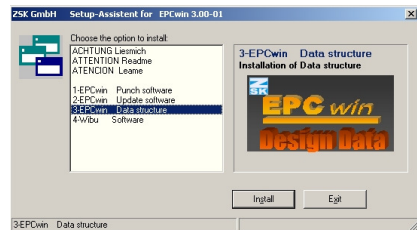
You have to execute three steps when installing EPCwin for the first time.

1. Installation of EPCwin program software
2. Installation of EPCwin data structure
3. Installation of WIBU security software

Re 1:



Select item *1 EPCwin Installation* and initiate the installation by pressing *Install*. Follow the instructions on the screen. The setup program guides you through the individual installation steps.

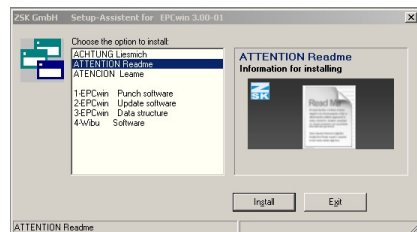
Re 2:

Select item **3 EPCwin Data structure** and initiate the installation by pressing **Install**. Follow the instructions on the screen. The setup program guides you through the individual installation steps. Make sure that the installation path for the data structure has at least one subdirectory [e.g. D:\EPCwinData].

The following dialog appears:



Initiate the extraction routine with **OK**.

Re 3:

Select item **4 WIBU Software** and initiate the installation by pressing **Install**. Follow the instructions on the screen. The setup program guides you through the individual installation steps.

Concluding installation routine

Close Windows and switch off the computer.

Connect the supplied WIBU dongle to the computer. → Page 6

Switch on the computer.

Configure the 3-button mouse. → Page 6

Select the language and enter the Product ID. → Page 7

Updating from EPCwin 1.x/2.x to 3.x

Note : updating from Version 1.x/2.x to Version 3.x is subject to a charge. You need new passwords for Version 3.x. You can download the passwords from atelier@zsk.de. DEMO days installed with Version 1.x/2.x are retained and do not expire.

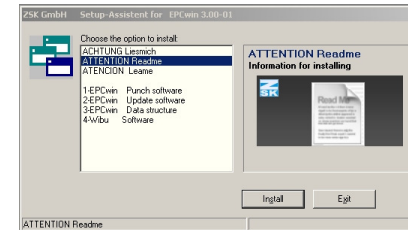
You cannot perform the update unless the installed EPCwin Version is more recent than Version 1.06-01.

Save your EPCwin design data and system parameters.

Insert the EPCwin program CD.

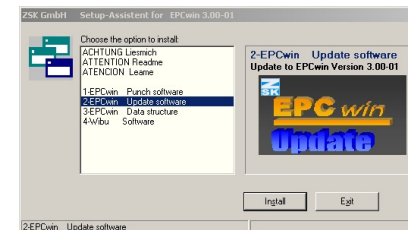
The EPCwin setup assistant starts automatically. If it fails to start, initiate the program [*CD-ROM:\InstManager\Setup.exe*] or double-click <Left><Left> on the CD-ROM symbol.

The EPCwin setup assistant appears on the screen



You have to execute two steps when updating EPCwin.

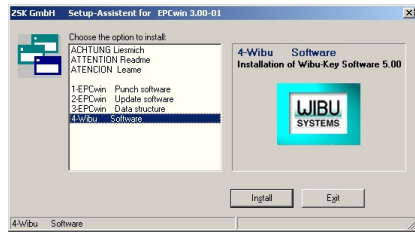
1. Update of EPCwin program software
2. Installation of WIBU security software

Re 1:

Select item **2 EPCwin Update** and initiate the installation by pressing **Install**. Follow the instructions on the screen. The setup program guides you through the individual installation steps.

Re 2:

It is essential that you install the new version of the WIBU key software.



Select item **4 WIBU Software** and initiate the installation by pressing *Install*. Follow the instructions on the screen. The setup program guides you through the individual installation steps.

Concluding installation routine

During the update operation, updated TT monogram font files were installed in the directory *../EPCwin/GiSFonts_300_01*.

If you wish to use these updated fonts in EPCwin, copy all or individual TT monogram font files to your data directory. Note that any fonts stored under the same name, including ones that you have edited, will be overwritten.

The copy path is usually as follows: *Program Files/EPCwin/GiSFonts_300_01* to *../EPCwinData/GiSFonts*.

When you start the program for the first time, you have to check and, if necessary, set the path for the TT monograms, e.g. to *../EPCwinData/GiSFonts* under *Utilities => Default setting => Data directories*.

After the update, the system parameter sets for the new automatic programs in punch (14) and design (1, 25, 34, 35, 44) are missing. You have to create these under *Main menu/Parameter settings/Parameter sets*.

EPCwin is then ready to run.

Connecting the WIBU dongle

The EPCwin program cannot run unless the WIBU dongle is connected. The supplied dongle has to be connected to the appropriate computer interface depending on the type of the dongle (USB or parallel). If the supplied WIBU dongle has a parallel connector, it has to be connected to the printer port. Once the WIBU dongle is connected, the printer cable can be connected to it.

Protection against irreparable damage and theft (USB dongle)

We recommend protecting a USB dongle against irreparable damage by connecting it to the computer by way of a USB extension lead. This enables you to attach the end of the cable carrying the dongle to the computer in such a way that the dongle cannot break off if somebody collides with it. It also offers better protection against theft because you can lock the dongle in a desk drawer, for example, or keep it safe elsewhere.

Configuring the 3-button mouse

You are recommended to assign the ESC function to the center mouse button. This operation is performed in Windows under Control Panel / Mouse. We also suggest that you reduce the mouse motion speed. This will enable you to work with greater precision and reduce your exposure to fatigue.

Uninstalling

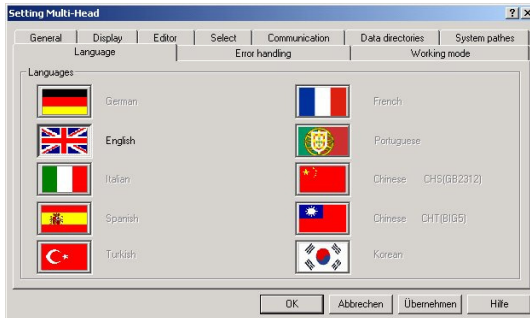
EPCwin program components can be removed using the standard Windows function: My Computer/Control Panel/Software. This routine removes both the EPCwin program software and the WIBU security software. An EPCwin data structure must be removed (deleted) manually, e.g. in the Windows Explorer, because these data are user-specific.

Selecting language and entering Product ID

Start the EPCwin program.

Close the start dialog.

The dialog for selecting the language appears on the screen:



Select the desired language and confirm with *Accept* and *OK*.

You are asked to enter the supplied 10-character Product ID. If you do not know the Product ID, contact ZSK Support.



Enter the Product ID and confirm with *OK*.


The program is closed automatically if an incorrect password is entered several times.


Close the EPCwin options dialog.

- Entering temporary (DEMO) passwords → Page 8
- Entering permanent passwords → Page 10

Entering temporary (DEMO) passwords

Before activating temporary options, please consult ZSK Support. This is necessary because the period of release (number of days) has to be determined in advance.

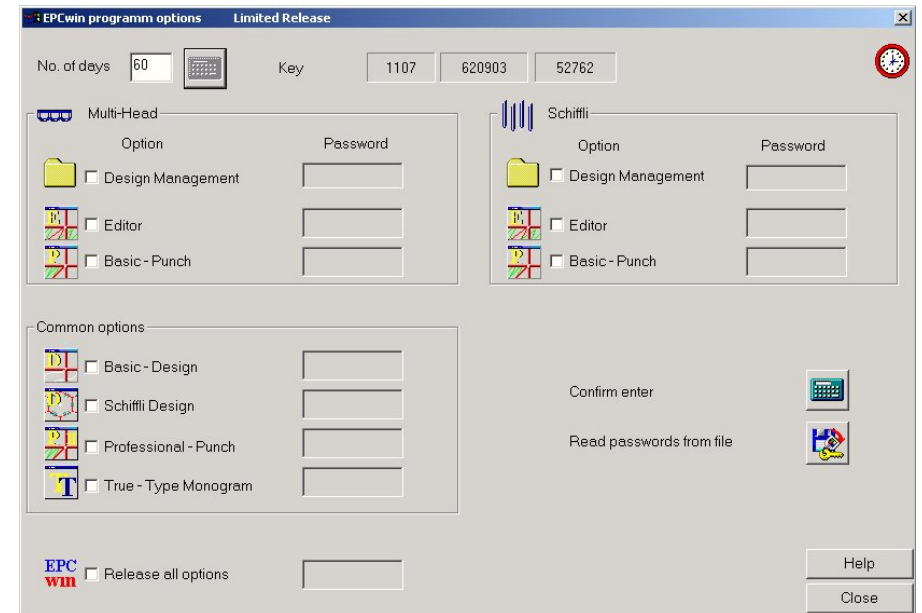
In the main menu select  *Utilities*,

and in the Utilities menu, select  *Passwords*.

In the *EPCwin program options* dialog, select

 *Time-limited passwords*.

The following dialog appears on the screen:



Preliminary steps

Enter the enabled period in the box alongside *No. of days*. Click on the calculator symbol to the right of the box. A 15-digit number code appears in the three boxes alongside. Notify ZSK Support of this number code, the enabled period (No. of days) and the software version. The simplest way is to report by phone or send an e-mail. Your personal passwords will then be issued.

Do not close this dialog until you have received and entered the passwords. Do not have a new number code calculated by entering another number of days because this would invalidate the passwords calculated for the first number code.

We prefer to send the passwords by e-mail.

Reading in passwords from a file:

The quickest way of entering the passwords required by your EPCwin system is to read them in from a file. ZSK Support sends the file as an attachment to the e-mail. Save the file to a 3½" disk or your hard disk. Click on *Read in passwords from file*. Select the saved password file: *EPCwinPSW*. The activated options are marked by a clock symbol.

Entering individual options manually:

Once you have received the passwords, select an option, e.g. *Multi-Head Design Management*, and enter the relevant password in the box alongside. Activate the option by clicking on the calculator symbol alongside *Confirm input*. Follow the same sequence for all the other options. A clock symbol appears alongside each activated option.

Entering all options manually:

Once you have received the password, tick the box *Release all options*. Enter the password in the box alongside and activate the option by clicking on the calculator symbol next to *Confirm input*. A clock symbol indicating temporary activation appears to the right of the option.

Concluding steps

Once you have activated the desired options, exit the dialog with *Close*.


**The temporary passwords expire:
if you change the PC's time or date;
if you connect the WIBU dongle to a different PC.**


Each working day is assumed to consist of about 8 hours. If you work for more than 8 hours a day with the EPCwin system, the enabled period is reduced accordingly.

Close the dialog that appears on the screen: *EPCwin program options*.

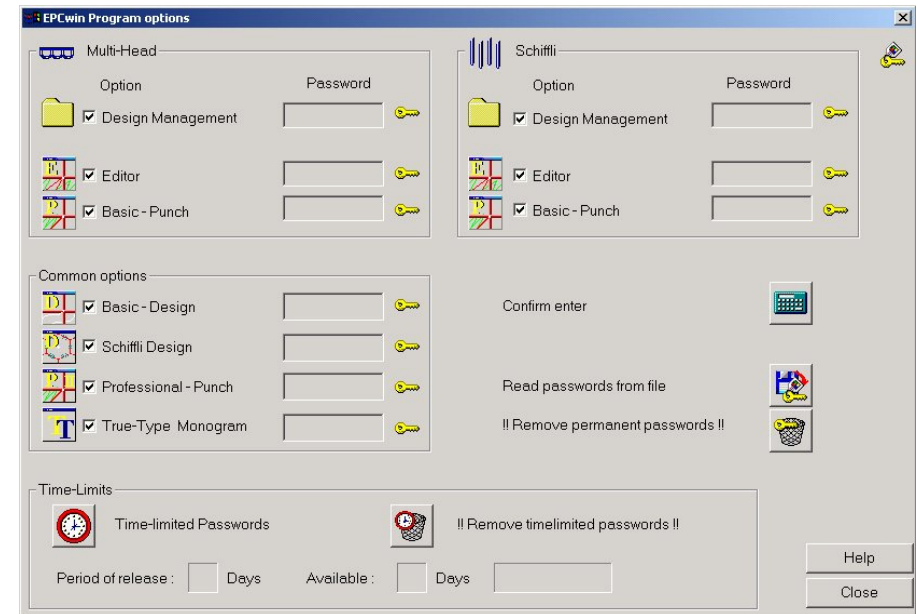
You can now use the EPCwin program with the released options.

Entering permanent passwords

In the main menu select  *Utilities*,

and in the Utilities menu, select  *Passwords*.

The following dialog appears on the screen:



We prefer to send the passwords by e-mail.

Reading in passwords from a file:

The quickest way of entering the passwords required by your EPCwin system is to read them in from a file. ZSK Support sends the file as an attachment to the e-mail. Save the file to a 3½" disk or your hard disk. Click on *Read in passwords from file*. Select the saved password file: *EPCwinPSW*. The activated options are marked by a key symbol.

Entering individual options manually:

Once you have received the passwords, select an option, e.g. *Multi-Head Design Management*, and enter the relevant password in the box alongside. Activate the option by clicking on the calculator symbol alongside *Confirm input*. Follow the same sequence for all the other options. A key symbol appears alongside each activated option.

If you enter a password incorrectly several times, the waiting time between entries increases.

Concluding steps

Once you have activated the desired options, exit the dialog with *Close*.

You can now use the EPCwin program with the released options.

Notes