

EPCWIN

THE HIGH-END SOFTWARE



Embroidery Software Partners

ZSK Stickmaschinen GmbH

Magdeburger Str. 38-40

D-47800 Krefeld

Tel: +49 (0) 2151 – 44 40

Fax: +49 (0) 2151 – 44 41 70

atelier@zsk.de

www.zsk.com



Installation / Update

Terms of license

EPCwin is to be used only on a single computer. Reproduction, hire and passing on are prohibited. Within the framework of the statutory provisions, no more extensive guarantees or warranties are granted. Your use of EPCwin constitutes acceptance of these terms of license.

What do I wish to do?

- I wish to install EPCwin → Page 2
- I wish to update to EPCwin 4.x → Page 4
- Connect the WIBU-SYSTEMS CodeMeter → Page 7
- Configure the mouse → Page 7
- I wish to uninstall EPCwin → Page 7
- I wish to activate EPCwin → Page 8
- I wish to enter temporary passwords (DEMO) → Page 9
- I wish to enter permanent passwords → Page 11

Please read the following note!

Windows user rights for the installation

The EPCwin Software as well as the WIBU SYSTEMS Security software must be installed by an operator with administrative rights.

Windows user rights for the operation of the EPCwin

The user account of the computer must have full Write – and Read authorisations for the EPCwin and EPCwinData folders.

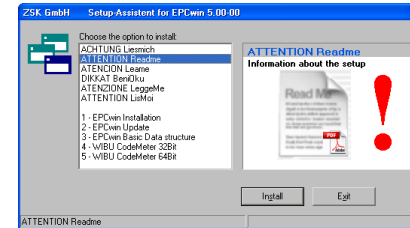
Installing EPCwin

Switch on the computer without connecting the supplied WIBU CodeMeter.

Insert the EPCwin program CD.

The EPCwin setup assistant starts automatically. If it fails to start, initiate the program [*CD-ROM:\InstManager\Setup.exe*] or double-click <Left><Left> on the CD-ROM symbol.

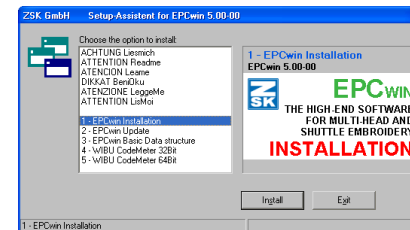
The EPCwin setup assistant appears on the screen



You have to execute three steps when installing EPCwin for the first time.

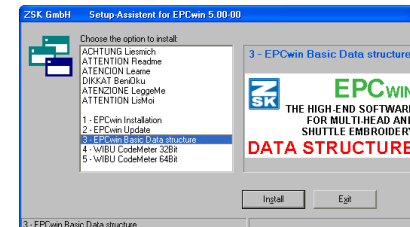
1. Installation of EPCwin program software
2. Installation of EPCwin basic data structure
3. Installation of WIBU-SYSTEMS CodeMeter software

Re 1: Installation of EPCwin program software



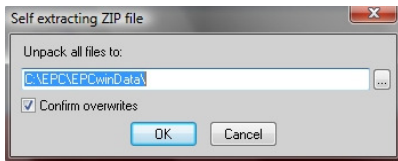
Select item *1 EPCwin Installation* and initiate the installation by pressing *Install*. Follow the instructions on the screen. The setup program guides you through the individual installation steps.

Re 2: Installation of EPCwin basic data structure



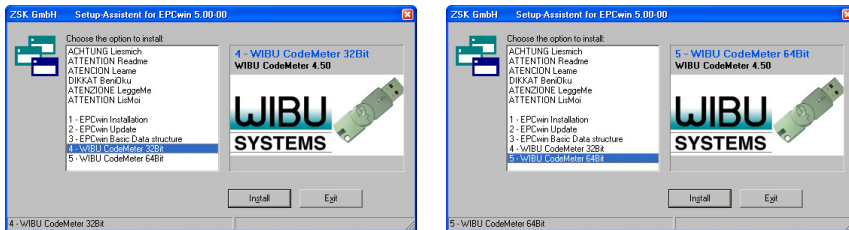
Select item *3 EPCwin Basic Data structure* and initiate the installation by pressing *Install*. Follow the instructions on the screen. The setup program guides you through the individual installation steps. Make sure that the installation path for the data structure has at least one subdirectory [e.g. D:\EPCwinData].

The following dialog appears:



Initiate the extraction routine with **OK**.

Re 3: Installation of WIBU-SYSTEMS CodeMeter software



Select item **4 WIBU CodeMeter 32Bit** or item **5 WIBU CodeMeter 64Bit** (dependent on the operating system, version 32bit or 64bit) and initiate the installation by pressing **Install**. Follow the instructions on the screen. The setup program guides you through the individual installation steps.

Concluding installation routine

Close Windows and switch off the computer.

Connect the supplied WIBU-SYSTEMS CodeMeter to the computer. → Page 7

Switch on the computer.

Configure the 3-button mouse. → Page 7

Select the language activate Codemeter → Page 8

Update von EPCwin 1.x/2.x/3.x/4.x auf 5.x

NEW SECURITY DONGLE: Starting from EPC version 3.60 it is essential, that you install the new version of the WIBU-SYSTEMS security software, to support the new CodeMeter hardware. After this you have to replace the WIBU-Key-Dongle with the CodeMeter.

Note

updating from Version 1.x/2.x/3.x/4.x to Version 5.x is subject to a charge. You need new passwords for Version 5.x. You can download the passwords from atelier@zsk.de. DEMO days installed with Version 1.x/2.x/3.x/4.x are retained and do not expire.

Important Notice

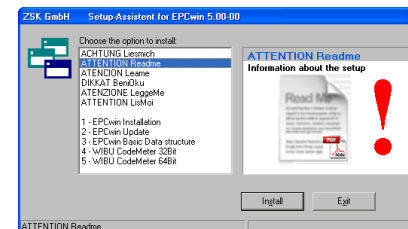
With the update to version 5.x, essential parts of the design- respectively block data storage have been modified. Consequently, designs or blocks can only be opened with versions from 5.x onward. Prior versions of the EPCwin are not able to open these designs correctly. Before downgrading back to version 4.x, or less, please contact in any case our customer service under atelier@zsk.de.

Please save your EPCwin design data and system parameters before the update.

Please use for saving the system parameters the function **Backup Parametres** in menu item **Input – Output**.

Insert the EPCwin program CD.

The EPCwin setup assistant starts automatically. If it fails to start, initiate the program [*CD-ROM:\InstManager\Setup.exe*] or double-click <Left><Left> on the CD-ROM symbol.

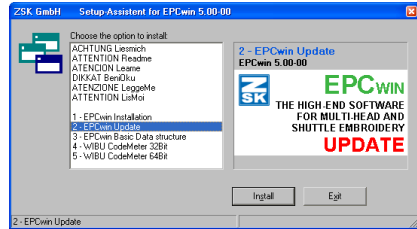


The EPCwin setup assistant appears on the screen

You have to execute three steps when updating EPCwin.

1. Update of EPCwin program software
2. Check the CodeMeter Firmware
3. Installation of WIBU-SYSTEMS CodeMeter software

Re 1: Update of EPCwin program software

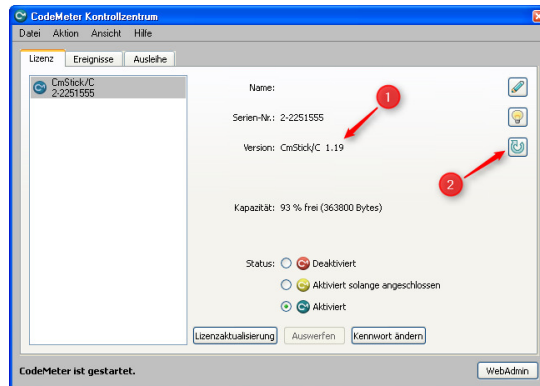


Select item *2 EPCwin Update* and initiate the installation by pressing *Install*. Follow the instructions on the screen. The setup program guides you through the individual installation steps.

Re 2: Check the CodeMeter Firmware



For this, please click on the CodeMeter symbol in the system bar. The CodeMeter control centre will open.



The EPCwin version 5.x requires firmware version 1.14 and higher. You will find your current version of firmware in the centre of the dialogue (arrow 1). If the shown version is less than 1.14, you have to carry out an update of the firmware.

For this purpose, your PC must be connected to the Internet. The update is started by clicking on the bottom symbol

on the right side (arrow 2). Please follow the instructions of the assistant.

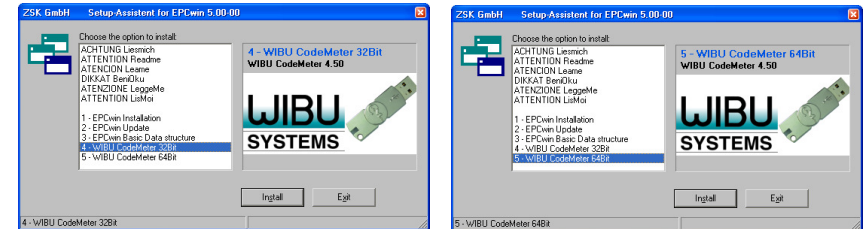
Attention!

Please do not switch off your PC during the update process, and do not put off the CodeMeter from the USB connection.

The CodeMeter shines red in this phase. After successful completion of the update, a message appears accordingly.

Re 3: Installation of WIBU-SYSTEMS CodeMeter software

It is essential that you install the new version of the WIBU-SYSTEM security software to support the CodeMeter.



Select item *4 WIBU CodeMeter 32Bit* or item *5 WIBU CodeMeter 64Bit* (dependent on the operating system, version 32bit or 64bit) and initiate the installation by pressing *Install*. Follow the instructions on the screen. The setup program guides you through the individual installation steps.

Concluding installation routine

During the update operation, updated TT monogram font files were installed in the directory *../EPCwin/GiSFonts_500_00*.

If you wish to use these updated fonts in EPCwin, copy all or individual TT monogram font files to your data directory. Note that any fonts stored under the same name, including ones that you have edited, will be overwritten.

The copy path is usually as follows: *C:\EPC\EPCwin\GiSFonts50* to *C:\EPC\EPCwinData\GiSFonts*.

When you start the program for the first time, you have to check and, if necessary, set the path for the TT monograms, e.g. to *../EPCwinData/GiSFonts* under *Utilities => Default setting => Data directories*.

After the update, the system parameter sets for the new automatic programs in punch (15) are missing. You have to create these under *Main menu/Parameter settings/Parameter sets*.

EPCwin is then ready to run.

Connecting the WIBU-Systems CodeMeter

The EPCwin program cannot run unless the WIBU-SYSTEMS CodeMeter is connected. The supplied dongle has to be connected to the appropriate computer interface USB.

Removing the WIBU-Key Dongles for EPCwin Version 1.0 .. 3.50-08

Remove the WIBU-Key Dongle from your USB-Port and uninstall the driver software from your computer.

Protection against irreparable damage and theft (USB CodeMeter)

We recommend protecting a USB CodeMeter against irreparable damage by connecting it to the computer by way of a USB extension lead. This enables you to attach the end of the cable carrying the dongle to the computer in such a way that the CodeMeter cannot break off if somebody collides with it. It also offers better protection against theft because you can lock the dongle in a desk drawer, for example, or keep it safe elsewhere.

Configuring the 3-button mouse

You are recommended to assign the ESC function to the center mouse button. This operation is performed in Windows under Control Panel / Mouse. We also suggest that you reduce the mouse motion speed. This will enable you to work with greater precision and reduce your exposure to fatigue.

Uninstalling

EPCwin program components can be removed using the standard Windows function: My Computer/Control Panel/Software. This routine removes both the EPCwin program software and the WIBU security software. An EPCwin data structure must be removed (deleted) manually, e.g. in the Windows Explorer, because these data are user-specific.

Selecting language and activate the CodeMeter

Start the EPCwin program.

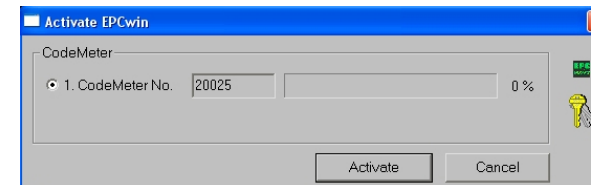
Close the start dialog.

The dialog for selecting the language appears on the screen:



Select the desired language and confirm with *Accept* and *OK*.


Please select the CodeMeter No. and confirm with *Activate*.




- Entering temporary (DEMO) passwords → Seite 9
- Entering permanent passwords → Seite 11

Entering temporary (DEMO) passwords

Before activating temporary options, please consult ZSK Support. This is necessary because the period of release (number of days) has to be determined in advance.

In the main menu select  *Utilities*,

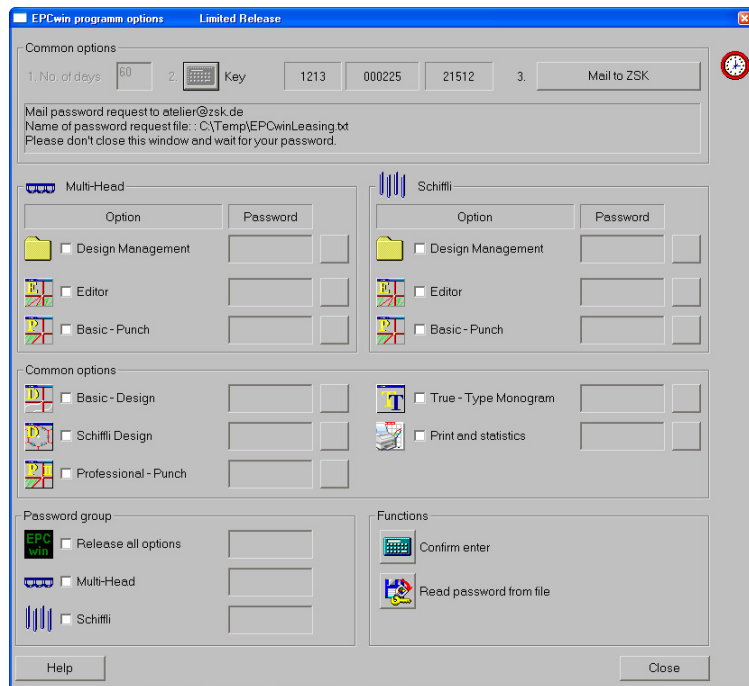
and in the Utilities menu, select  *Passwords*

In the *EPCwin program options* dialog, select

 *Time-limited passwords.*

Preliminary steps

Enter the enabled period in the box alongside *No. of days*. Click on the calculator symbol to the right of the box. A 15-digit number code appears in the three boxes alongside. Notify ZSK Support of this number code, the enabled period (No. of days) and the software version. The simplest way is to report by phone or send an e-mail. Your personal passwords will then be issued.



Do not close this dialog until you have received and entered the passwords. Do not have a new number code calculated by entering another number of days because this would invalidate the passwords calculated for the first number code.

We prefer to send the passwords by e-mail.

Reading in passwords from a file:

The quickest way of entering the passwords required by your EPCwin system is to read them in from a file. ZSK Support sends the file as an attachment to the e-mail. Save the file to a 3½" disk or your hard disk. Click on *Read in passwords from file*. Select the saved password file: *EPCwinPSW*. The activated options are marked by a clock symbol.

Entering individual options manually:

Once you have received the passwords, select an option, e.g. *Multi-Head Design Management*, and enter the relevant password in the box alongside. Activate the option by [Enter] or clicking on the calculator symbol alongside *Confirm input*. Follow the same sequence for all the other options. A clock symbol appears alongside each activated option.

Entering group of password manually:

Once you have received the password for a group (All options, MultiHead or Shuttle), tick the corresponding box. Enter the password in the box alongside and activate the option with [Enter] or by clicking on the calculator symbol next to *Confirm input*.

Concluding steps

Once you have activated the desired options, exit the dialog with *Close*.


The temporary passwords expire:
- if you change the PC's time or date;
- if you connect the WIBU dongle to a different PC.


Each working day is assumed to consist of about 8 hours. If you work for more than 8 hours a day with the EPCwin system, the enabled period is reduced accordingly.

Close the dialog that appears on the screen: *EPCwin program options*.

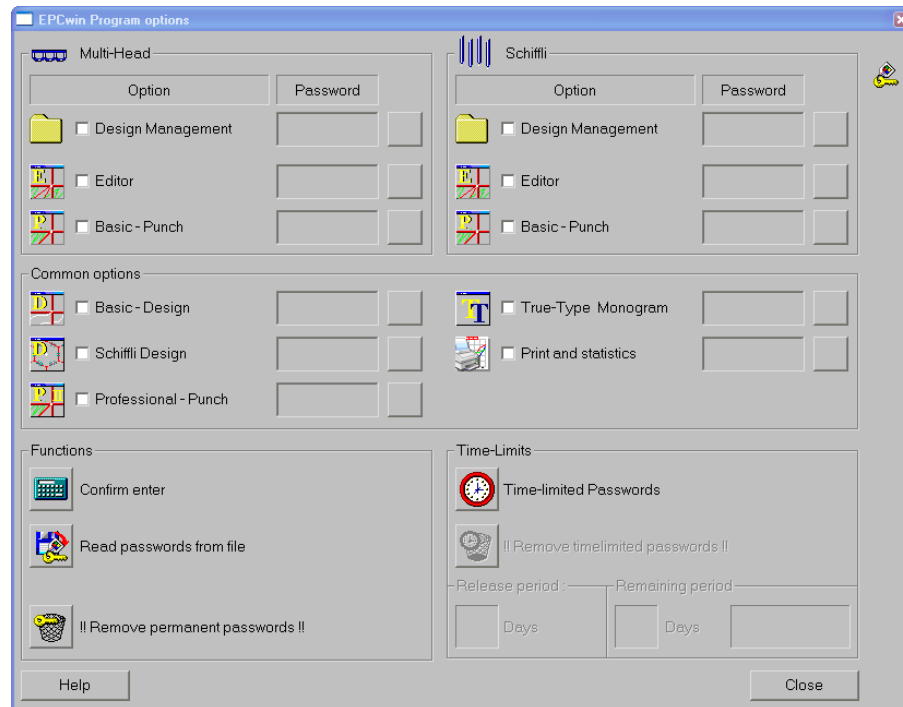
You can now use the EPCwin program with the released options.

Entering permanent passwords

In the main menu select  *Utilities*,

and in the Utilities menu, select  *Passwords*.

The following dialog appears on the screen:



We prefer to send the passwords by e-mail.

Reading in passwords from a file:

The quickest way of entering the passwords required by your EPCwin system is to read them in from a file. ZSK Support sends the file as an attachment to the e-mail. Save the file to a 3½" disk or your hard disk. Click on *Read in passwords from file*. Select the saved password file: *EPCwinPSW*. The activated options are marked by a key symbol.

Entering individual options manually:

Once you have received the passwords, select an option, e.g. *Multi-Head Design Management*, and enter the relevant password in the box alongside. Activate the option with [Enter] or by clicking on the calculator symbol alongside *Confirm input*. Follow the same sequence for all the other options. A key symbol appears alongside each activated option.

If you enter a password incorrectly several times, the waiting time between entries increases.

Concluding steps

Once you have activated the desired options, exit the dialog with *Close*.

You can now use the EPCwin program with the released options.