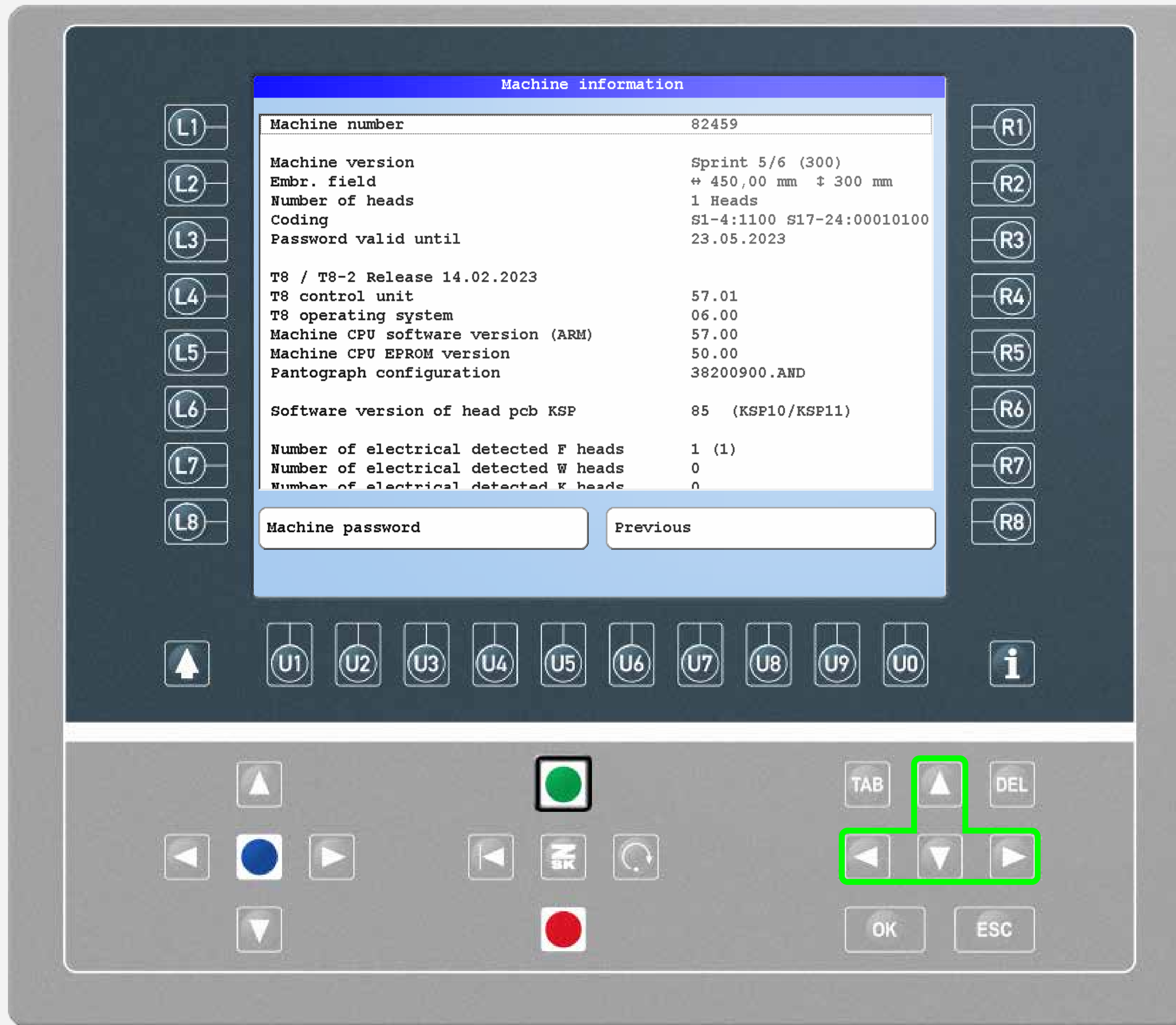




MACHINE INFORMATION, SCREENSHOT FUNCTION

Did you know this T8 function yet?

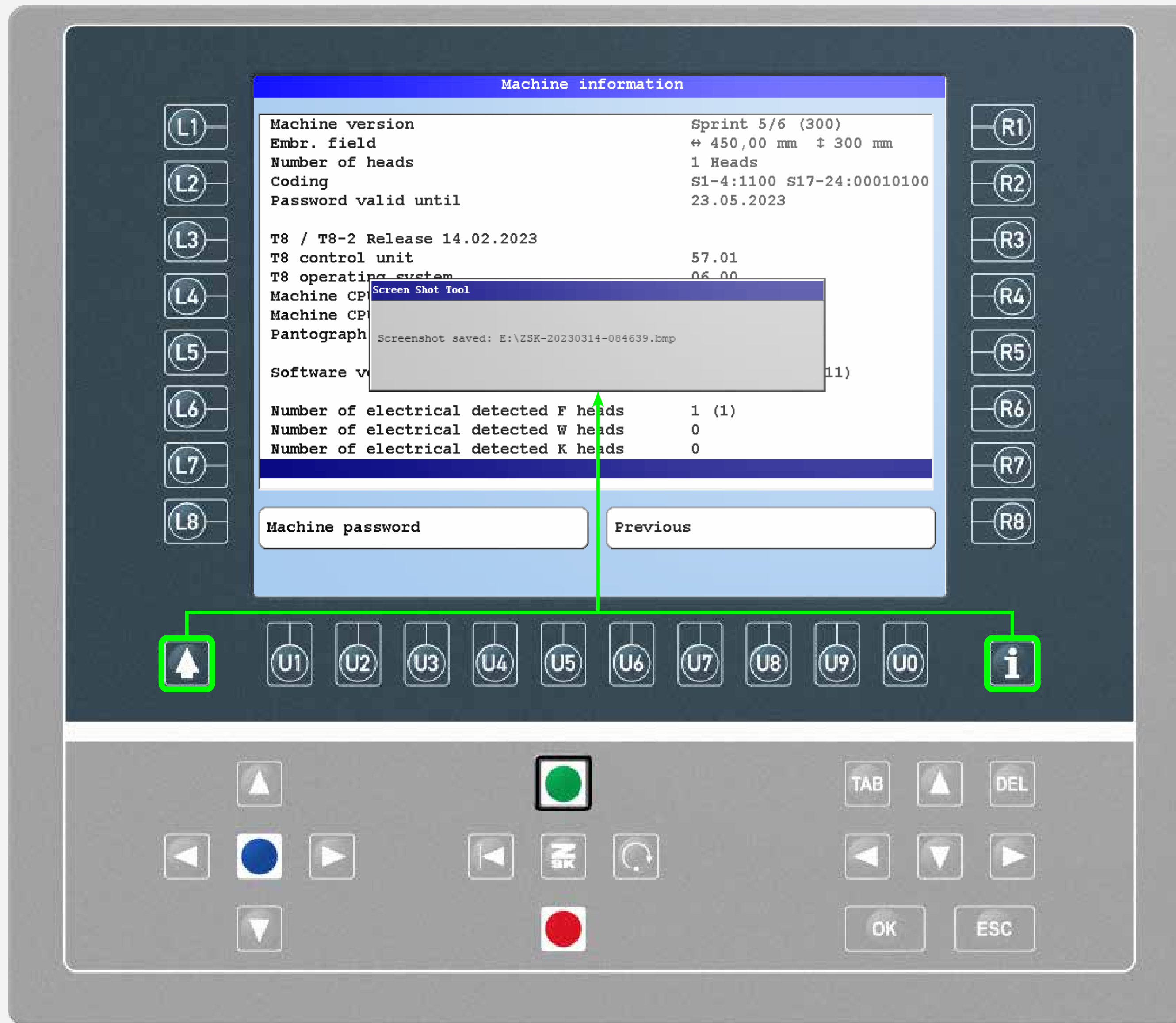


What?

Pressing the L1 function key, the T8 displays the machine information. Use the arrow keys to scroll, as important information may be shown further down or further to the right.

Why?

In service cases, the machine information is required for technical support. Please send a photo or a screenshot of the display to ZSK Service.



What?

To make a screenshot press and hold SHIFT, press and hold the INFO button for a few seconds while SHIFT is still pressed. The screenshot will be saved on an inserted USB drive.

Why?

In service cases, the machine information is required for technical support. The screenshots can also be useful to create manuals for your customers or employees.

Requirements

For making a screenshot an inserted USB drive and a recent T8 software version (released on 14.02.2023 or a more recent version) is needed.



ZSK Stickmaschinen GmbH
Magdeburger Str. 38-40
47800 Krefeld, Germany

Fon: +49 (0) 2151 444 0
Fax: +49 (0) 2151 444 170
E-Mail: zsk@zsk.de