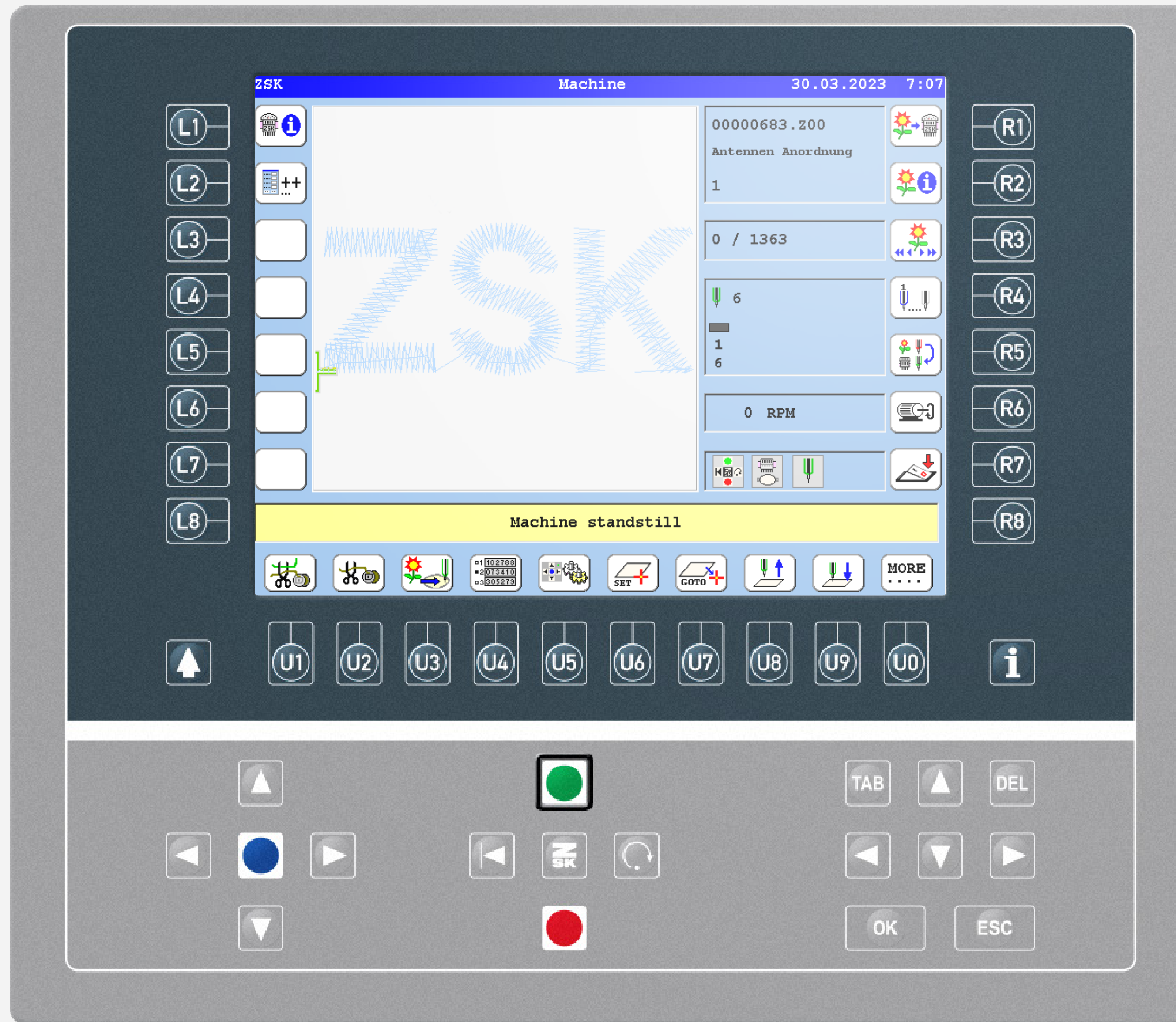




SIMPLE OPERATION MODE

Did you know this T8 function yet?

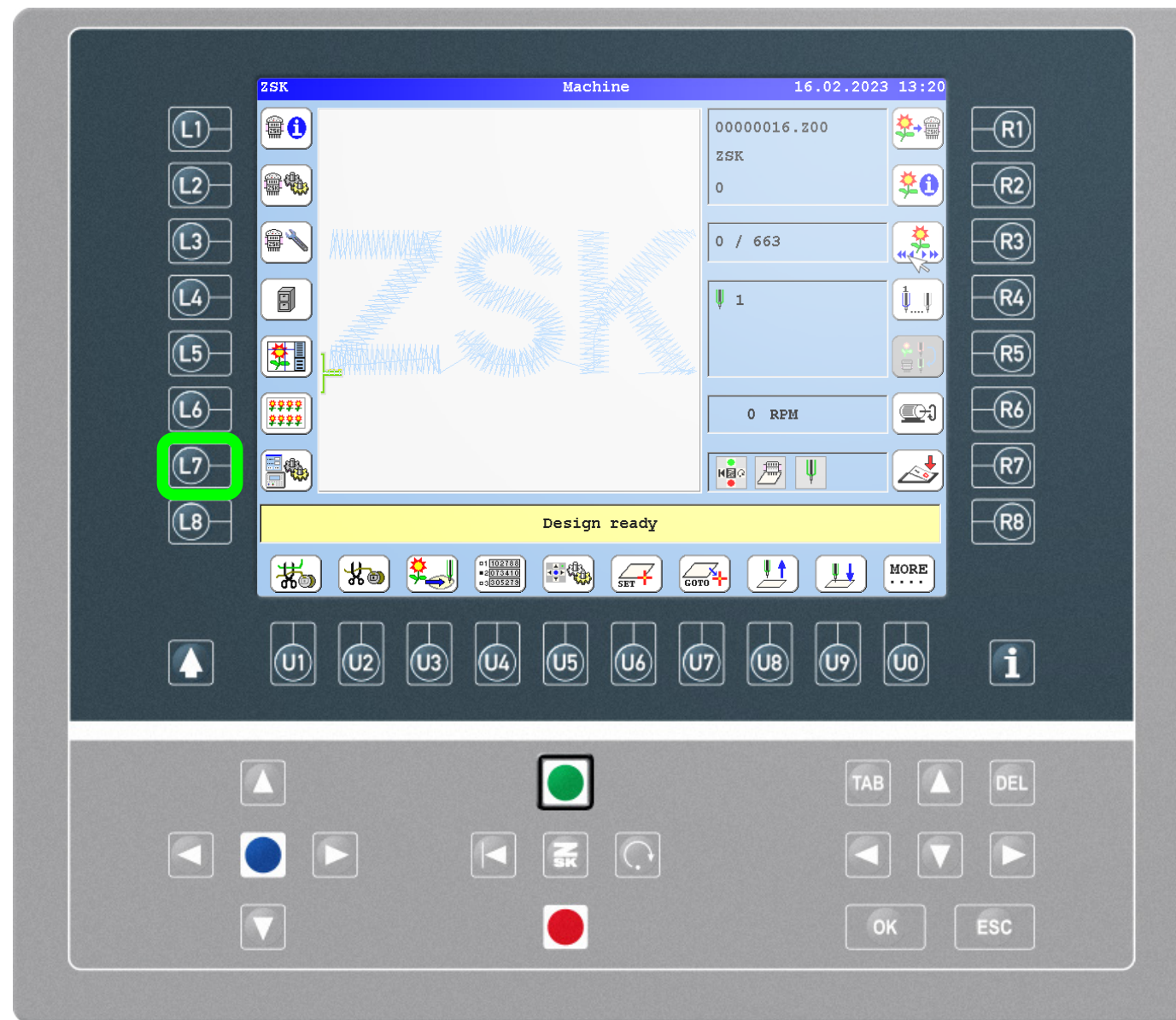


What?

The machine control offers the possibility to limit the user interface to fewer functions. Switching back to the standard mode can be secured by setting up a PIN.

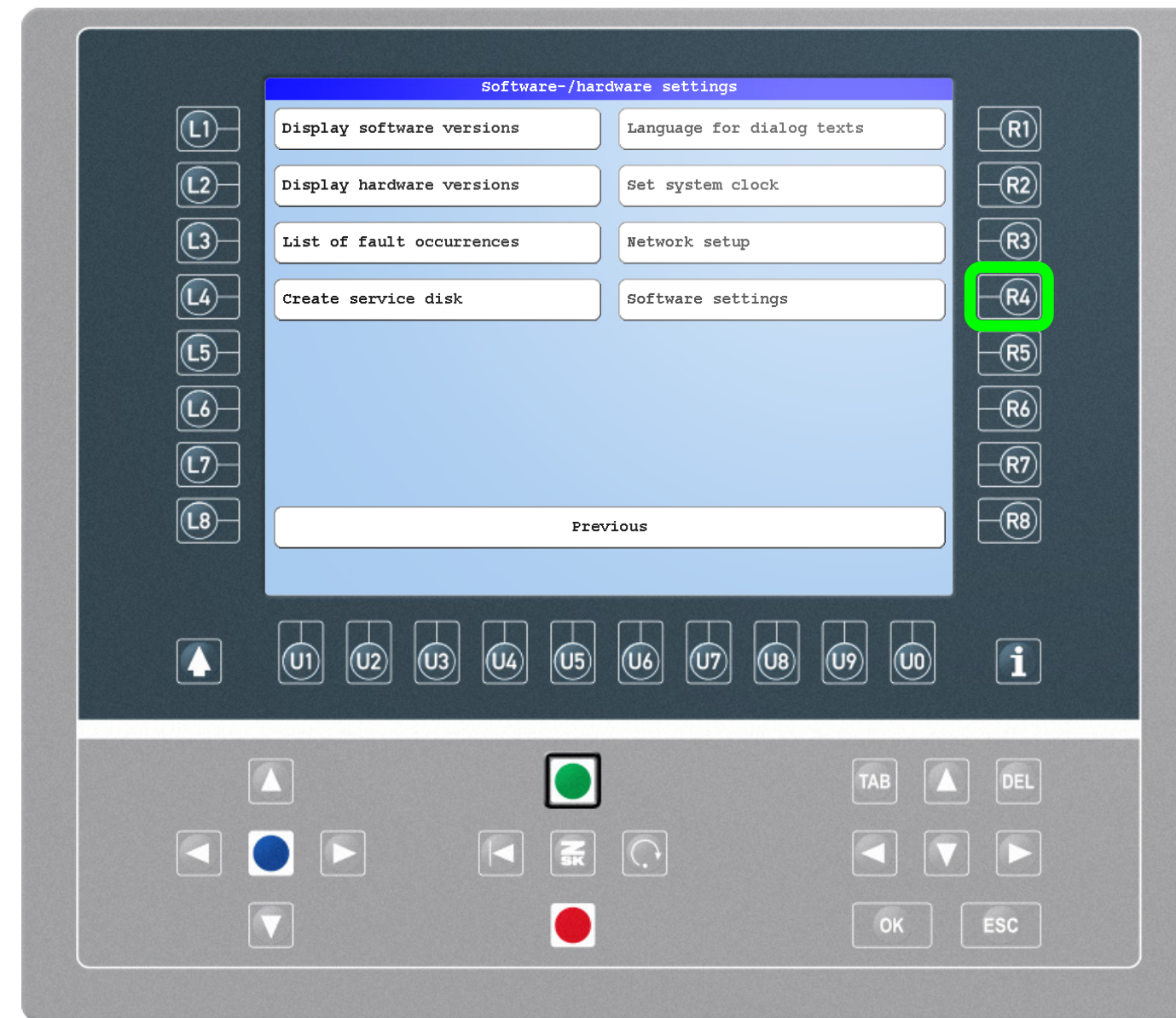
Why?

The simple operation mode makes it easier to use for less experienced staff and restricts access rights. For example, it is no longer possible to export patterns or change frame limits and machine settings.



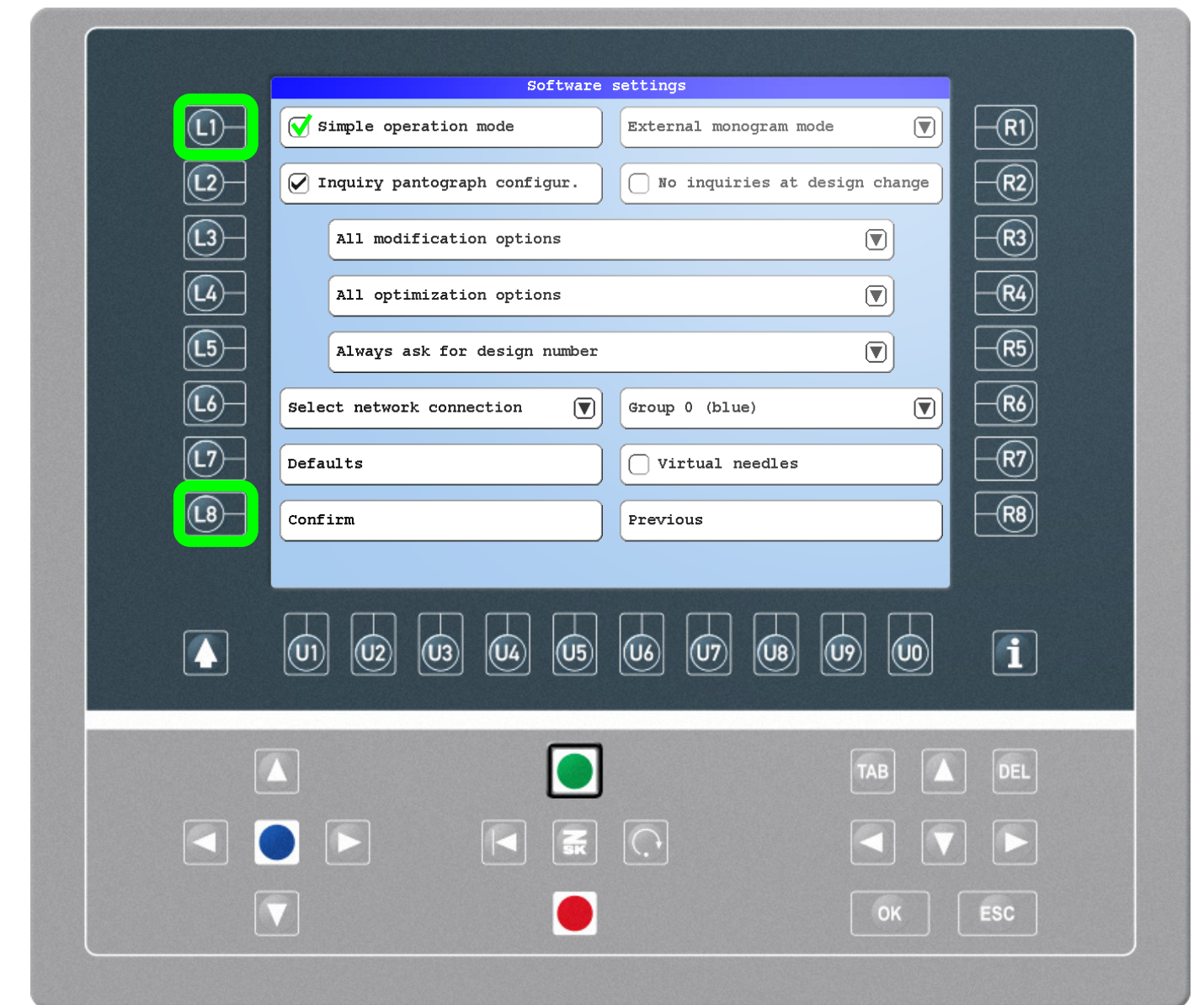
Step1

Press the L7 function key to enter the „Software-/Hardware settings“.



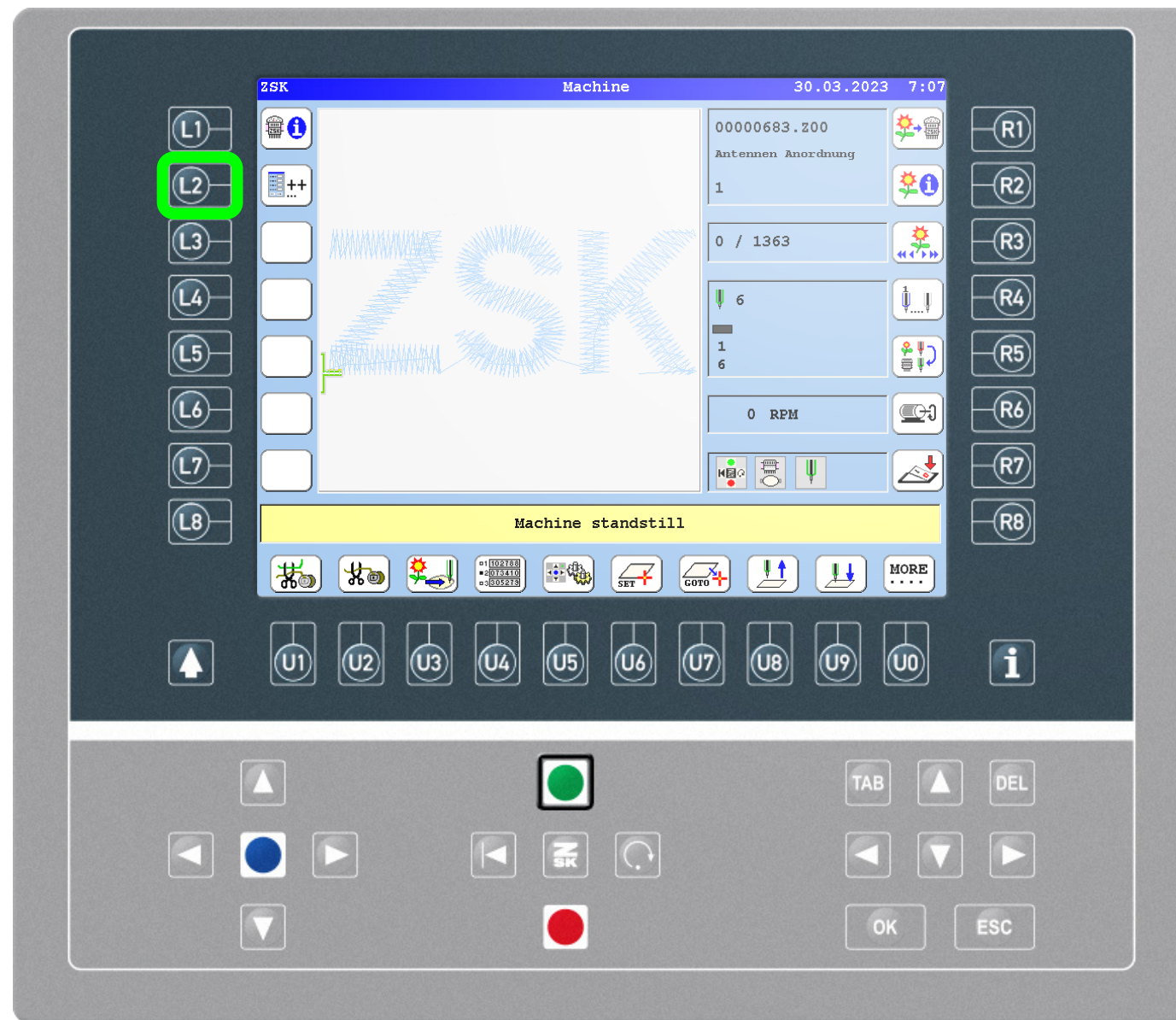
Step2

Press the R4 function key to enter the „Software settings“.



Step3

Press L1 to check „Simple operation mode“ and L8 to confirm.

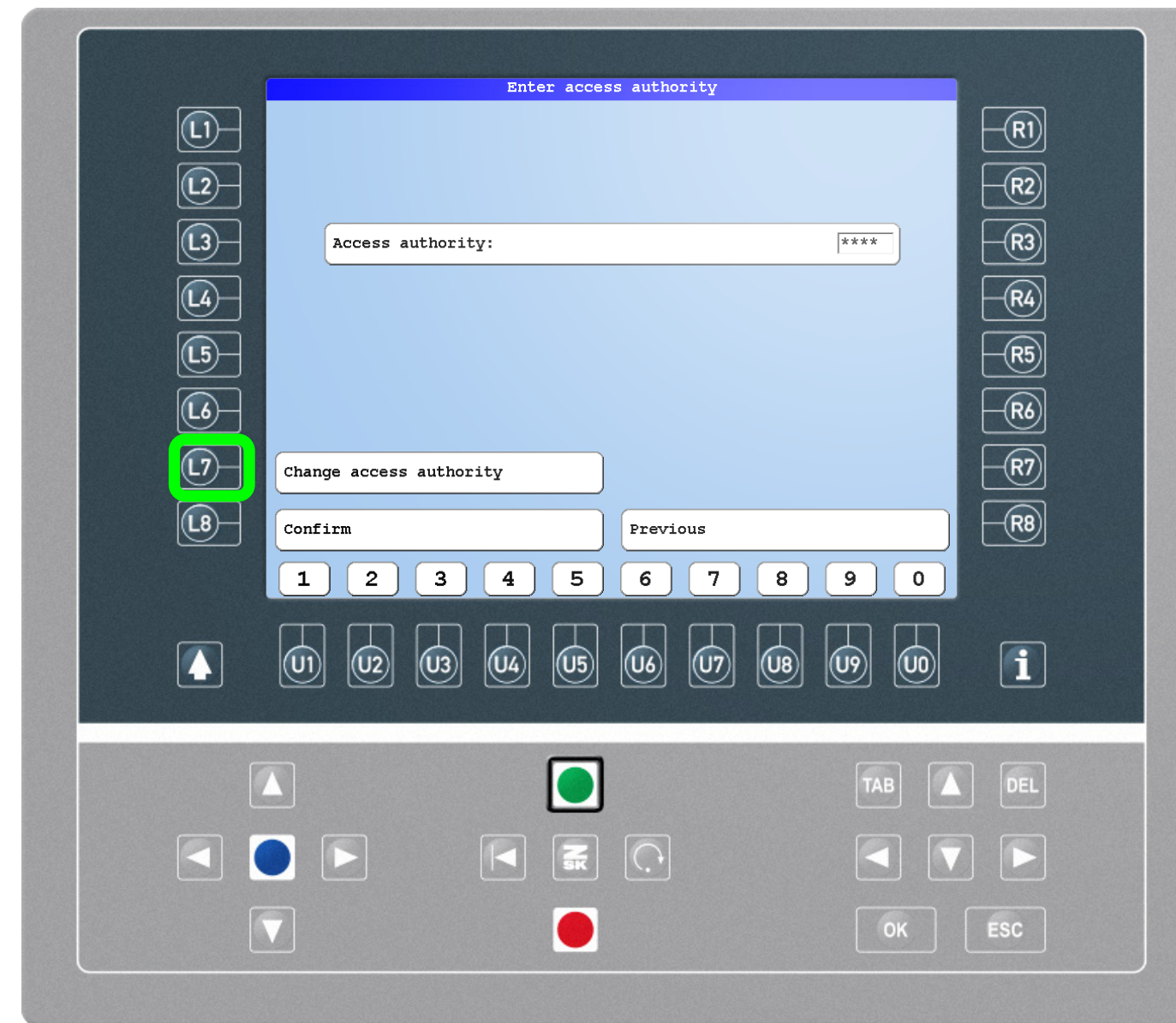


Step4 - Exit mode or set/change PIN

To exit the Simple operation mode press L2 on the main screen, confirm, enter the PIN (if set) and confirm again.

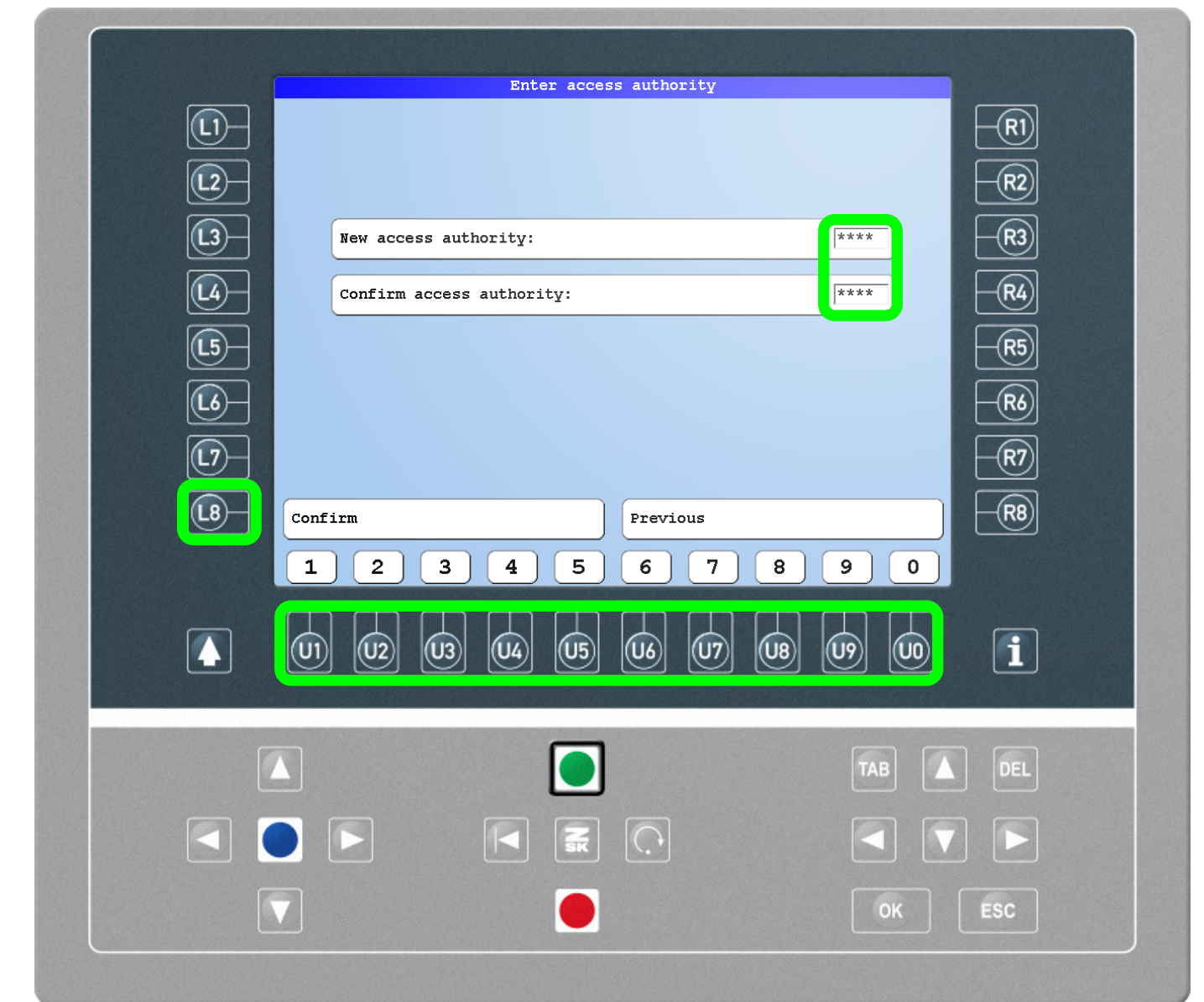
Quicktip:

If the PIN has been forgotten, contact ZSK Service to obtain a temporary password and reset the PIN. To do this, provide the machine number and the actual date, displayed in the top line of the main screen.



Step5

To set a new PIN press the L7 function key „Change access authority“. If there is a PIN already set, enter the PIN before pressing L7.



Step6

Enter and confirm a PIN using the U1-U0 function keys. Set the PIN bei pressing L8.

Very important: Notice the PIN number for later use.



ZSK Stickmaschinen GmbH
Magdeburger Str. 38-40
47800 Krefeld, Germany

Fon: +49 (0) 2151 444 0
Fax: +49 (0) 2151 444 170
E-Mail: zsk@zsk.de