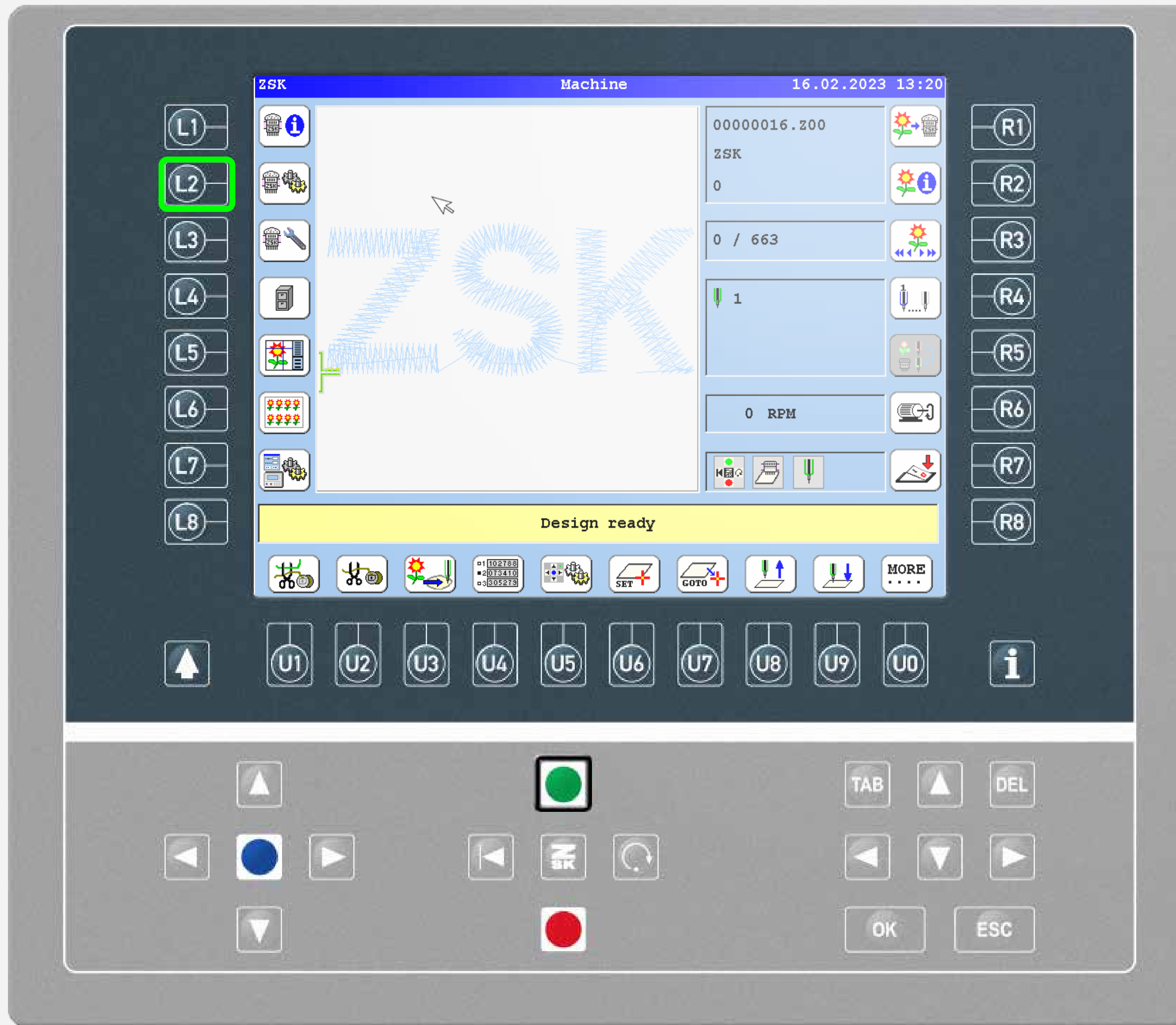




STOP AT RESTART POINT

Did you know this T8 function yet?



What?

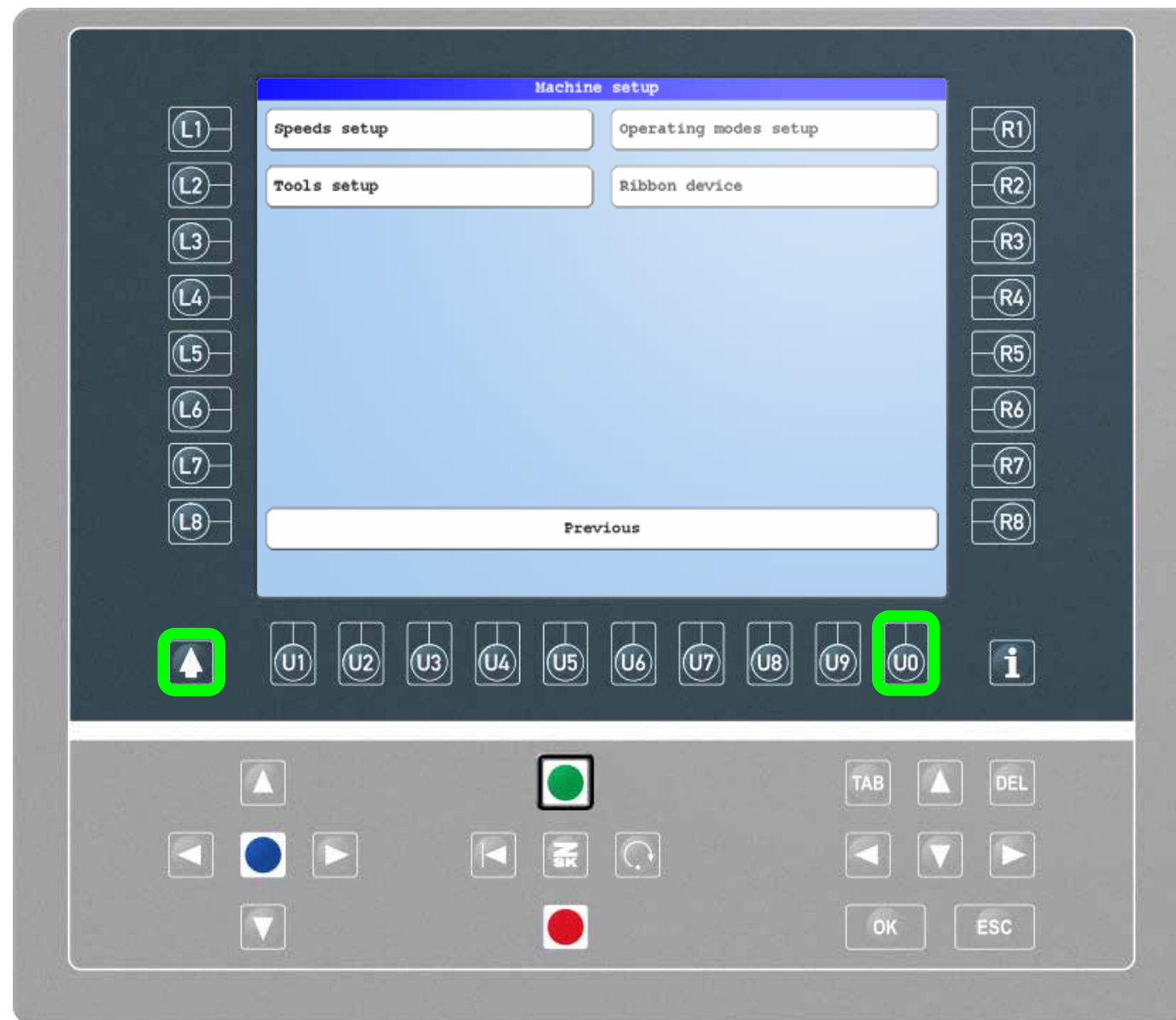
When embroidery is resumed after fixing a thread breakage, the heads without thread breakage are switched on again at the restart point. It is possible to configure whether the machine stops at this point.

Why?

After a thread breakage, the machine goes back a defined number of stitches. Depending on the length of the previous stitches, this can result in loose thread at the heads without thread breakage. The set stop can be used to pull back the thread to prevent loops.

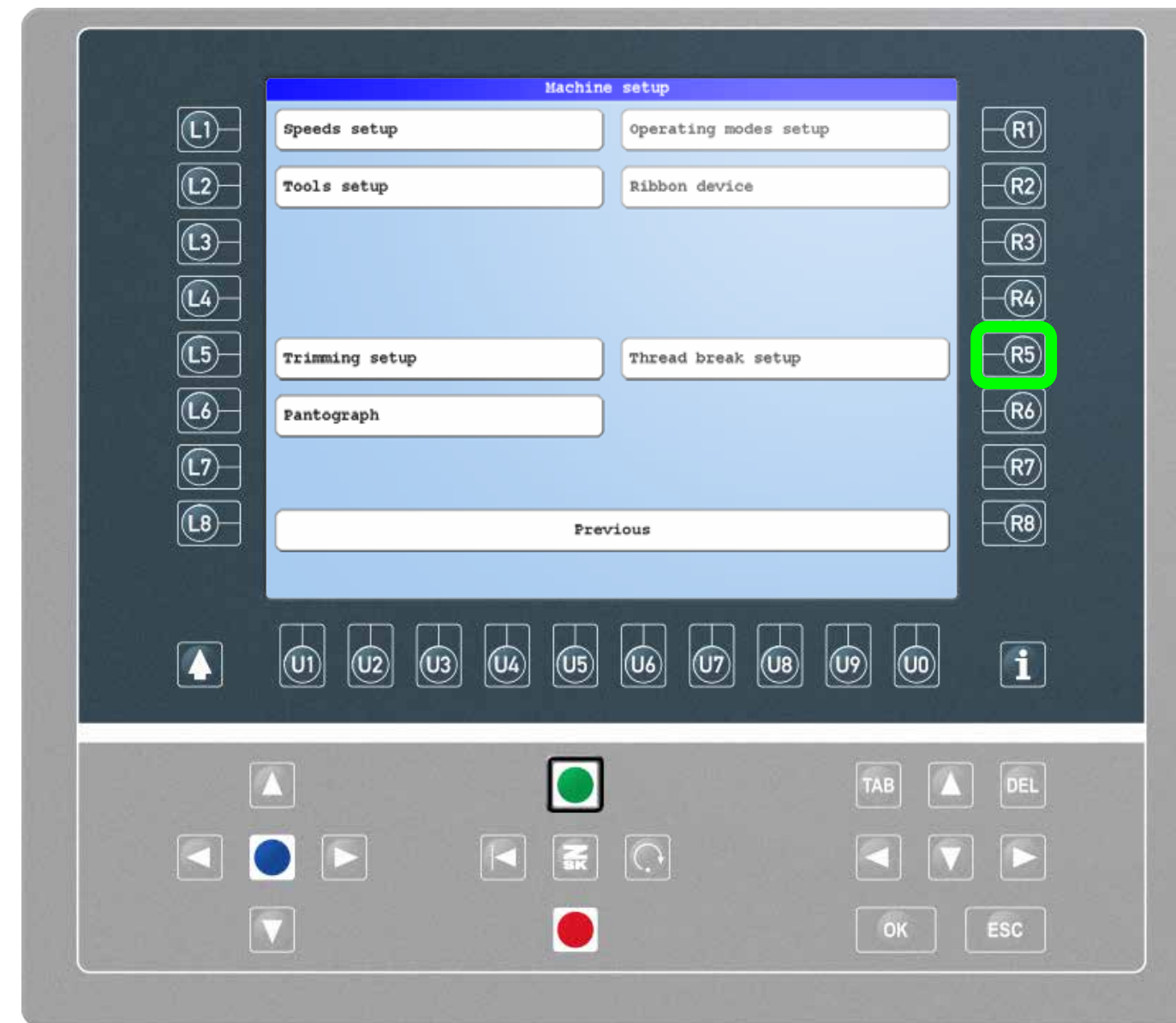
Requirements

Software version CON_57xx or more recent.



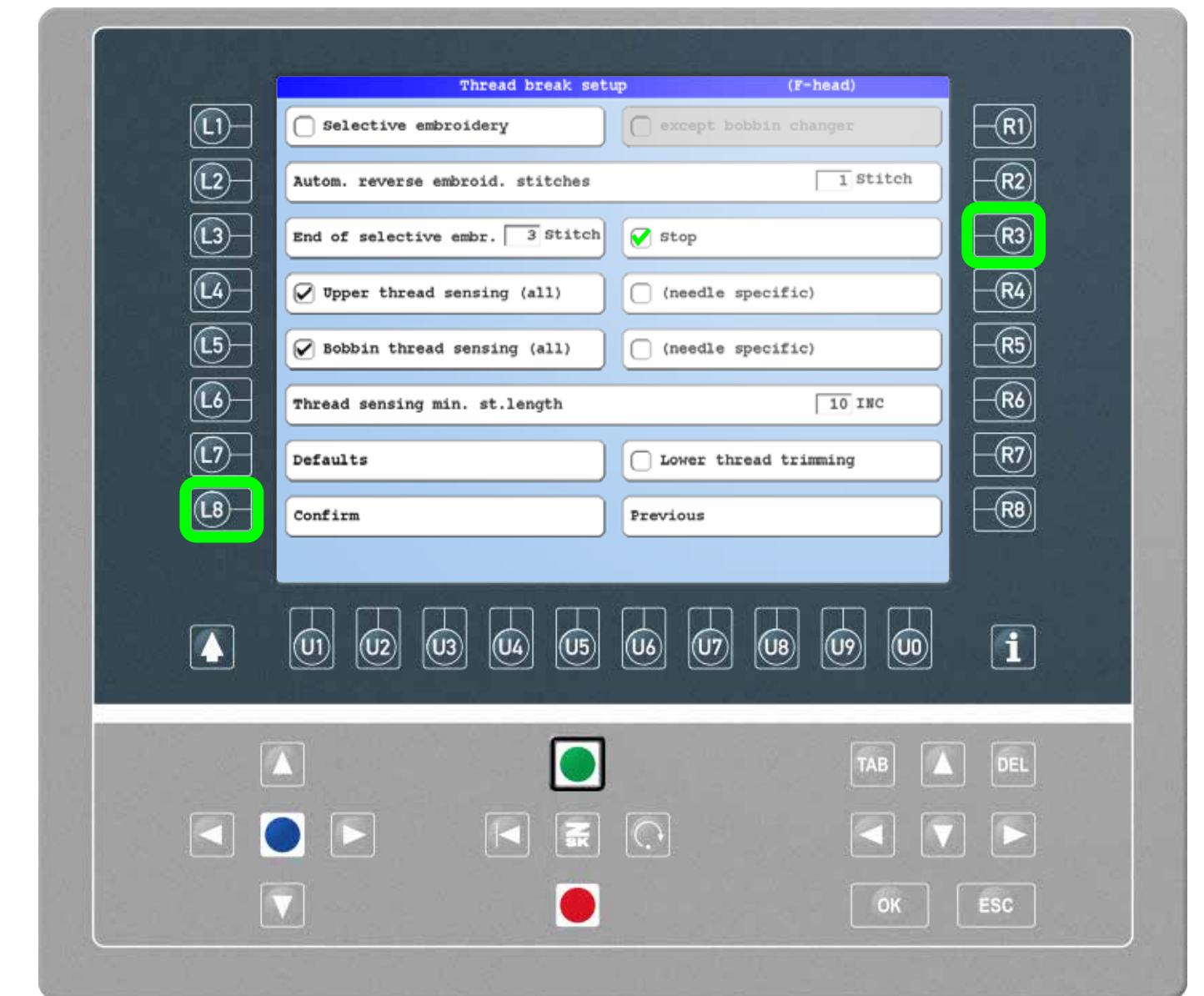
Step1

After entering the machine setup by pressing the L2 function key on the start screen, your menu will probably be displayed partially. By pressing SHIFT + U0 all options will be displayed.



Step2

On the fully displayed screen, press the R5 function key to enter the thread break setup.



Step3

Check the checkbox „Stop“ by pressing the R3 function key. Confirm with L8.



ZSK Stickmaschinen GmbH
Magdeburger Str. 38-40
47800 Krefeld, Germany

Fon: +49 (0) 2151 444 0
Fax: +49 (0) 2151 444 170
E-Mail: zsk@zsk.de