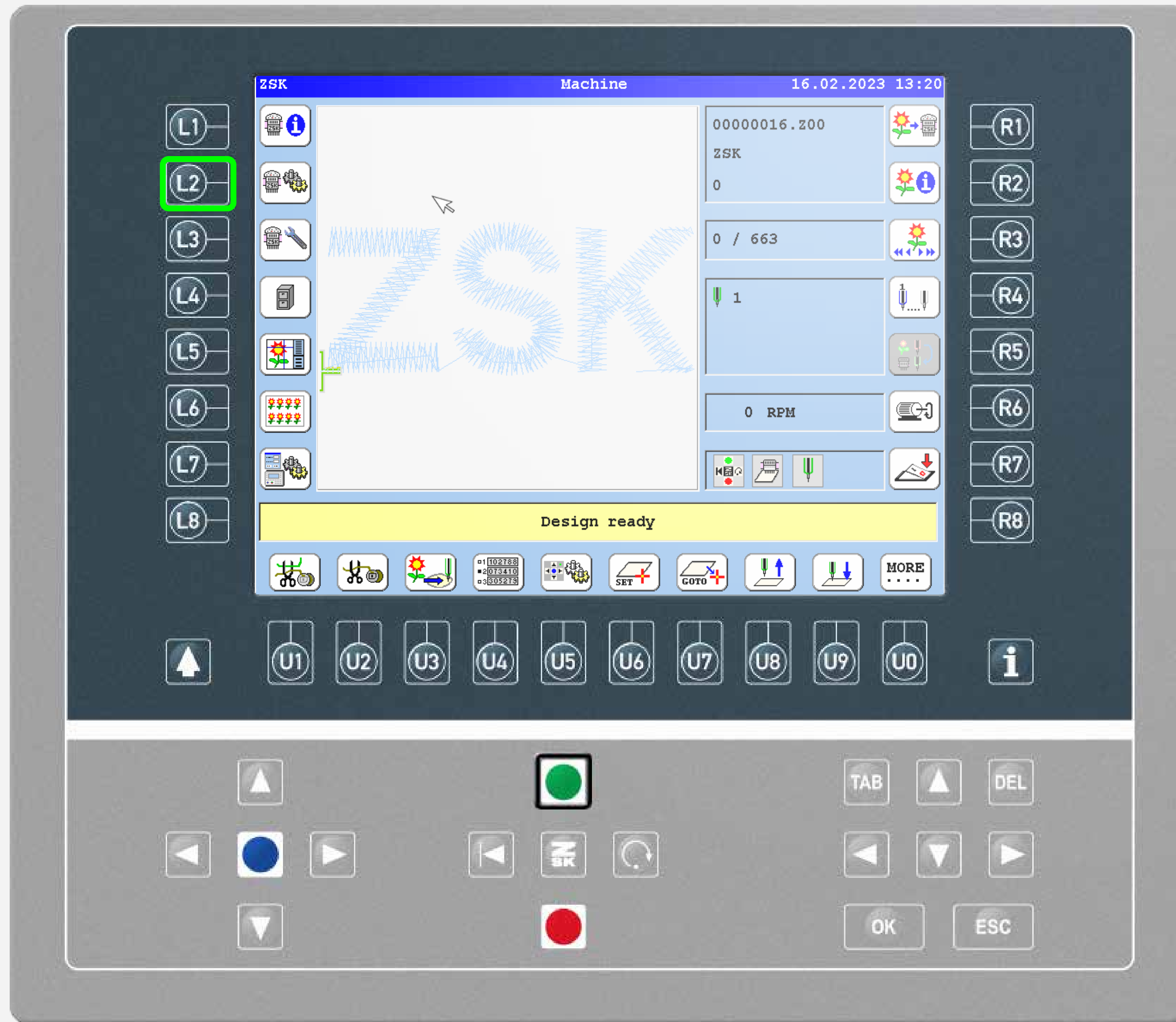




START SLOWLY

Did you know this T8 function yet?



What?

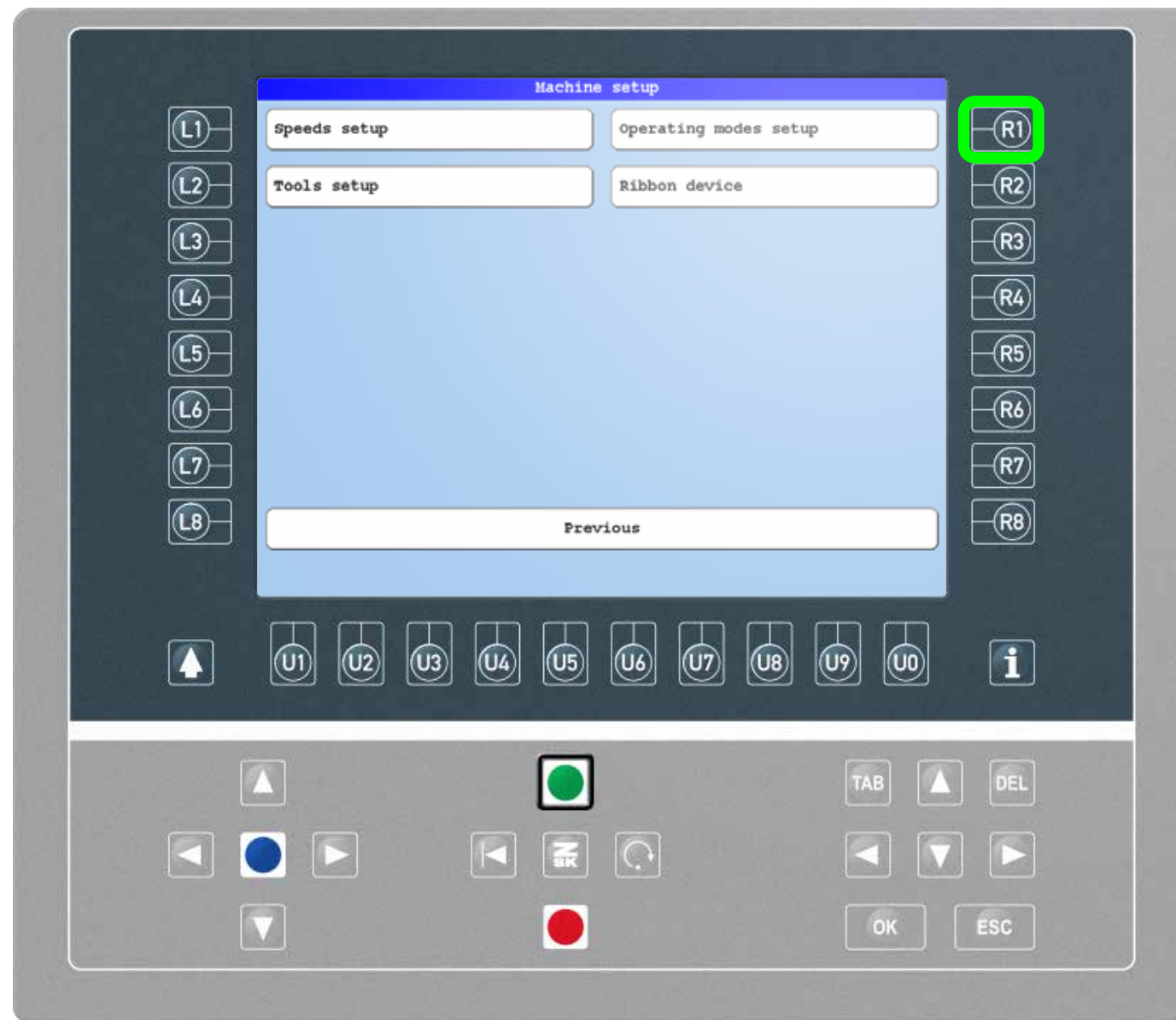
Embroidery can be started with a defined number of slow stitches. Automatic slow speed during piecing.

Why?

Some yarns require a low speed at the start of embroidery to achieve a better piecing result.

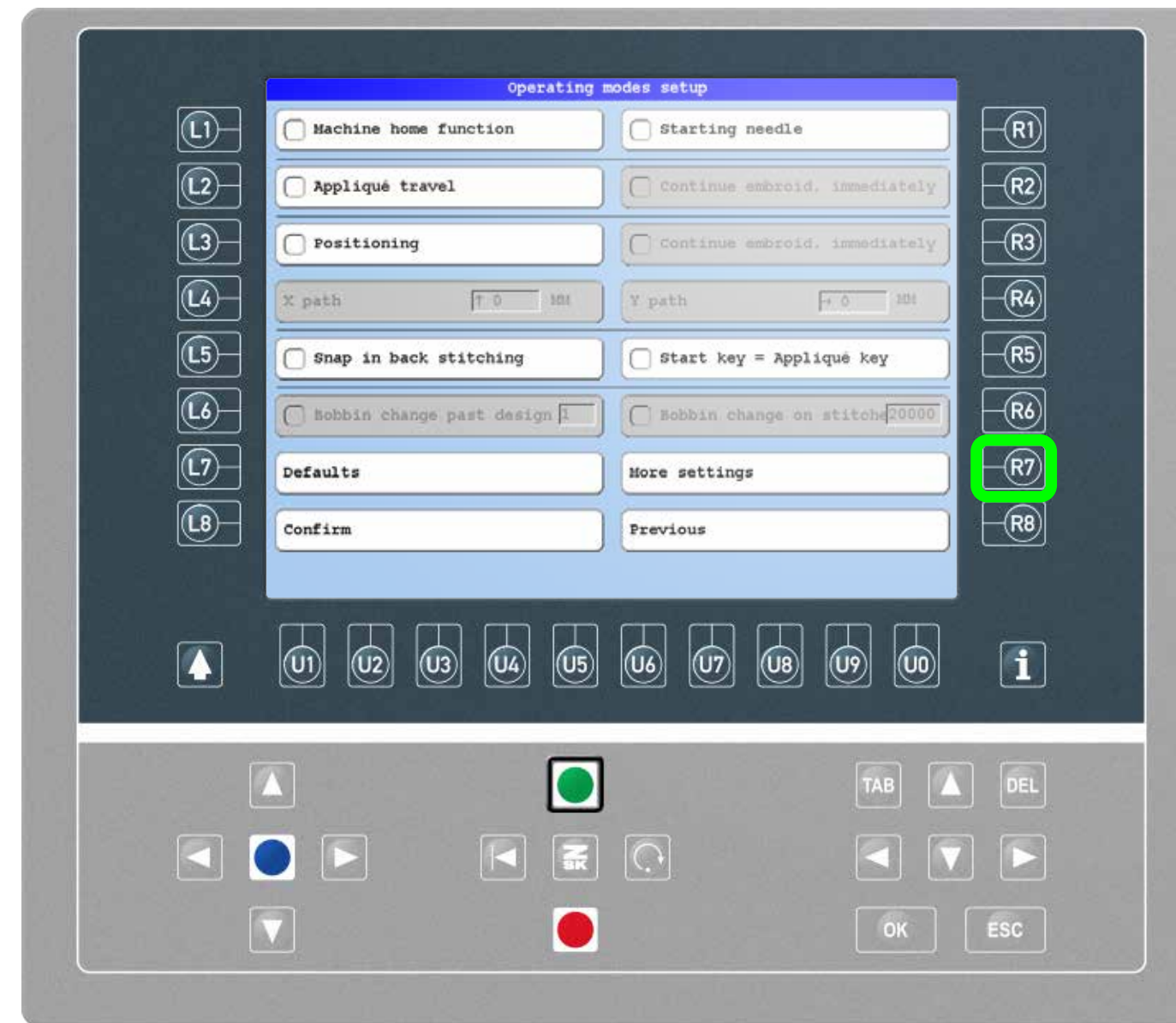
Requirements

Software version CON_57xx resp. ARM_57xx or more recent.



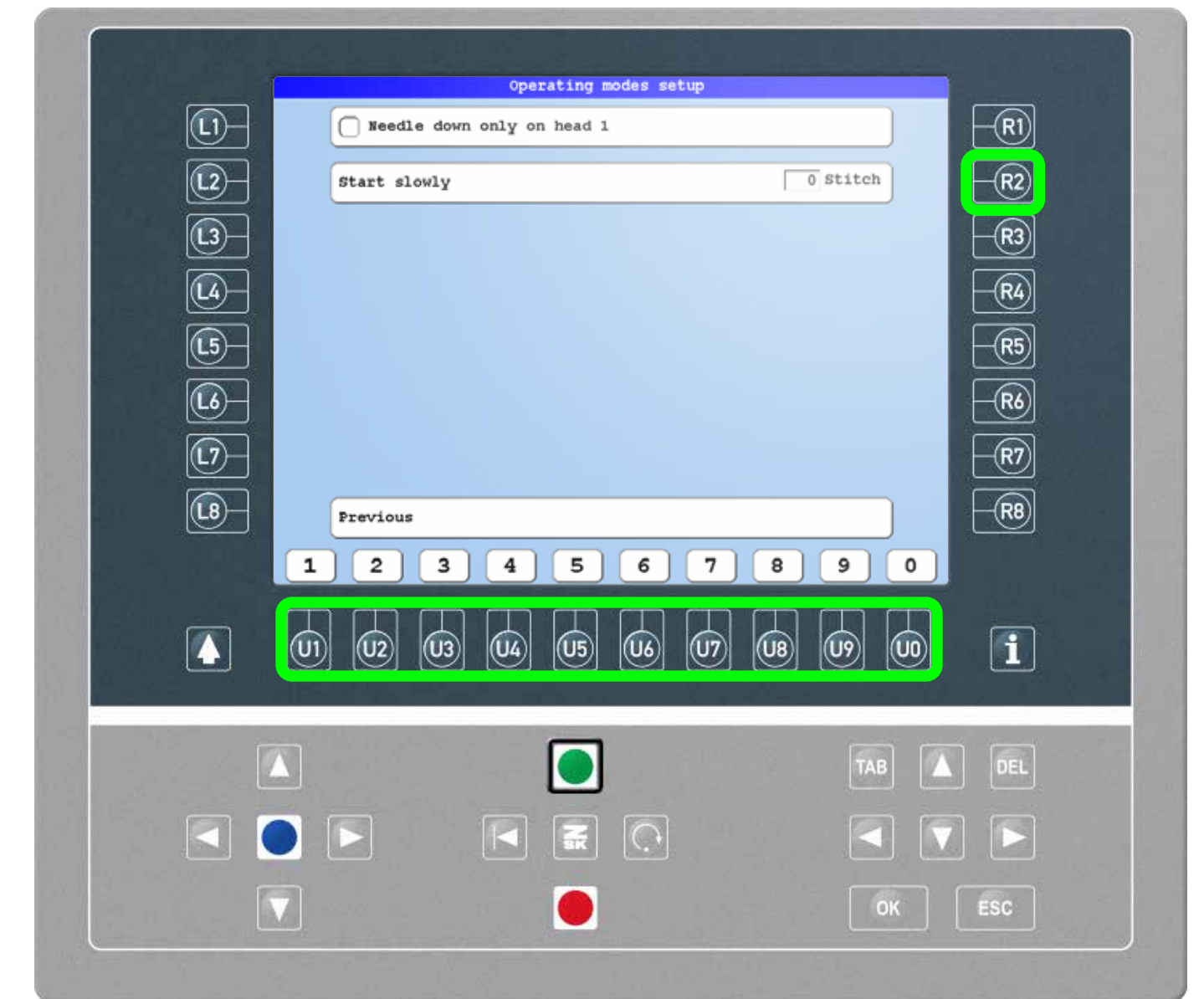
Step1

Enter the machine setup by pressing the L2 function key on the start screen. Press the R1 function key to enter the operating mode setup.



Step2

Press the R7 function key to display more settings.



Step3

Use the input field under R2 and enter the desired number of stitches with the U1-U0 function keys.



ZSK Stickmaschinen GmbH
Magdeburger Str. 38-40
47800 Krefeld, Germany

Fon: +49 (0) 2151 444 0
Fax: +49 (0) 2151 444 170
E-Mail: zsk@zsk.de