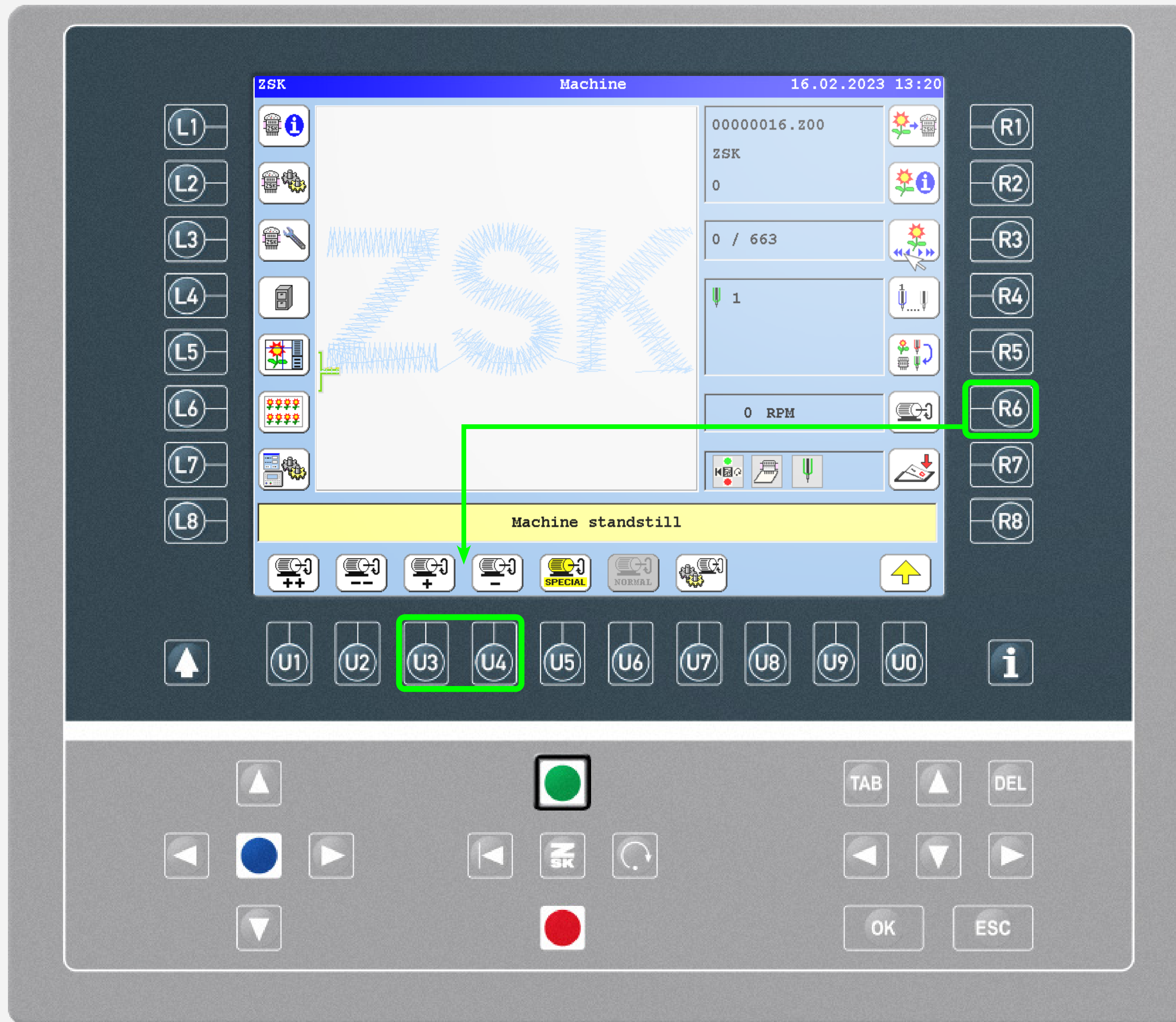




PRESS & HOLD SPEED ADJUSTMENT

Did you know this T8 function yet?



What?

Pressing the R6 function key displays the menu bar for speed adjustment. The speed can be set to a minimum, to a maximum and to a userdefined speed, and can also be changed step by step with the U3 and U4 function keys.

By keeping the U3 and U4 function keys pressed, the speed can be changed until the key is released.

Why?

The adjustment is more ergonomic and comfortable for the user.

Requirements

Software version CON_57xx resp. ARM_57xx or more recent.



ZSK Stickmaschinen GmbH
Magdeburger Str. 38-40
47800 Krefeld, Germany

Fon: +49 (0) 2151 444 0
Fax: +49 (0) 2151 444 170
E-Mail: zsk@zsk.de