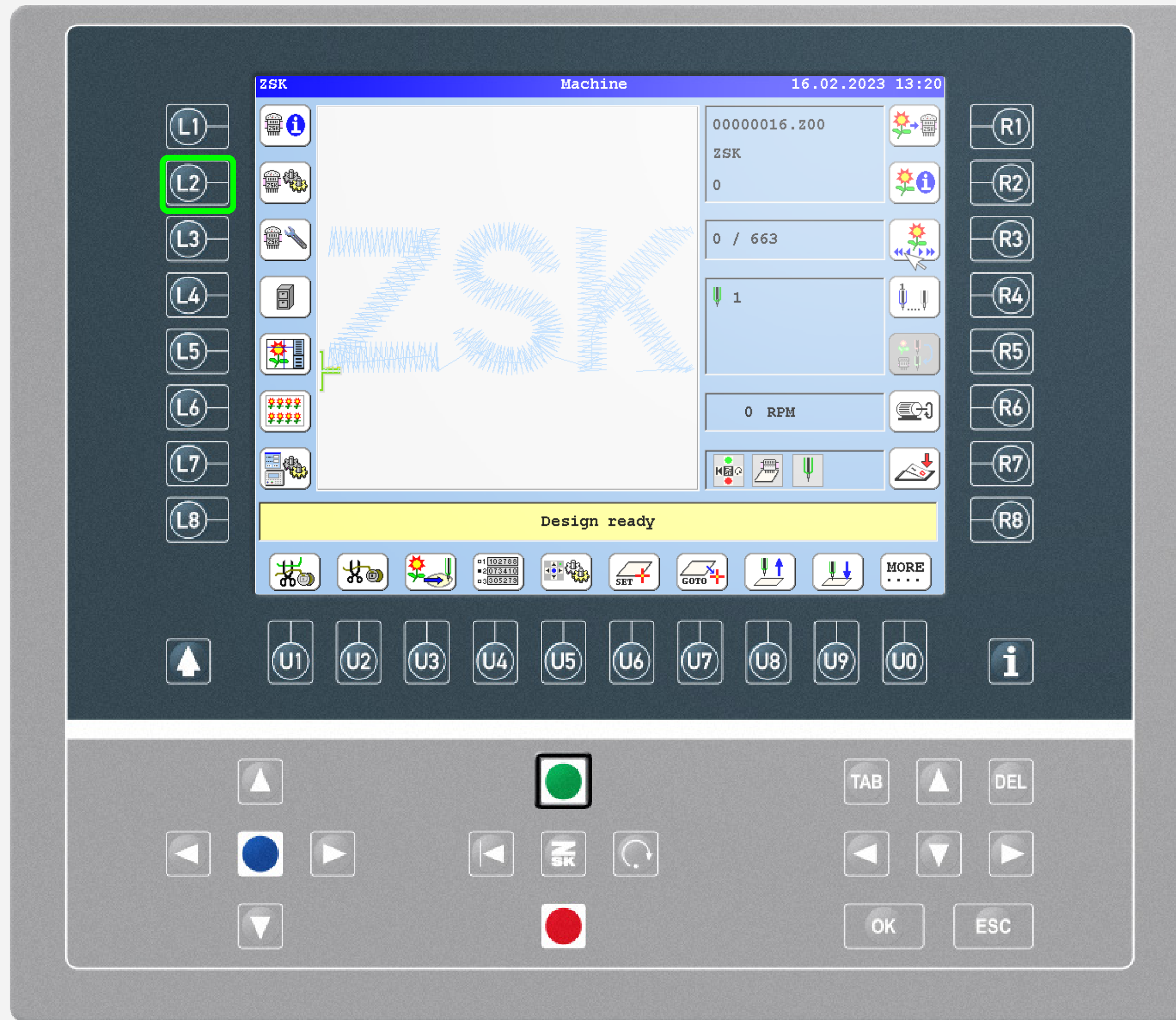




MOVE SEQUIN FEEDER BACKWARDS

Did you know this T8 function yet?



What?

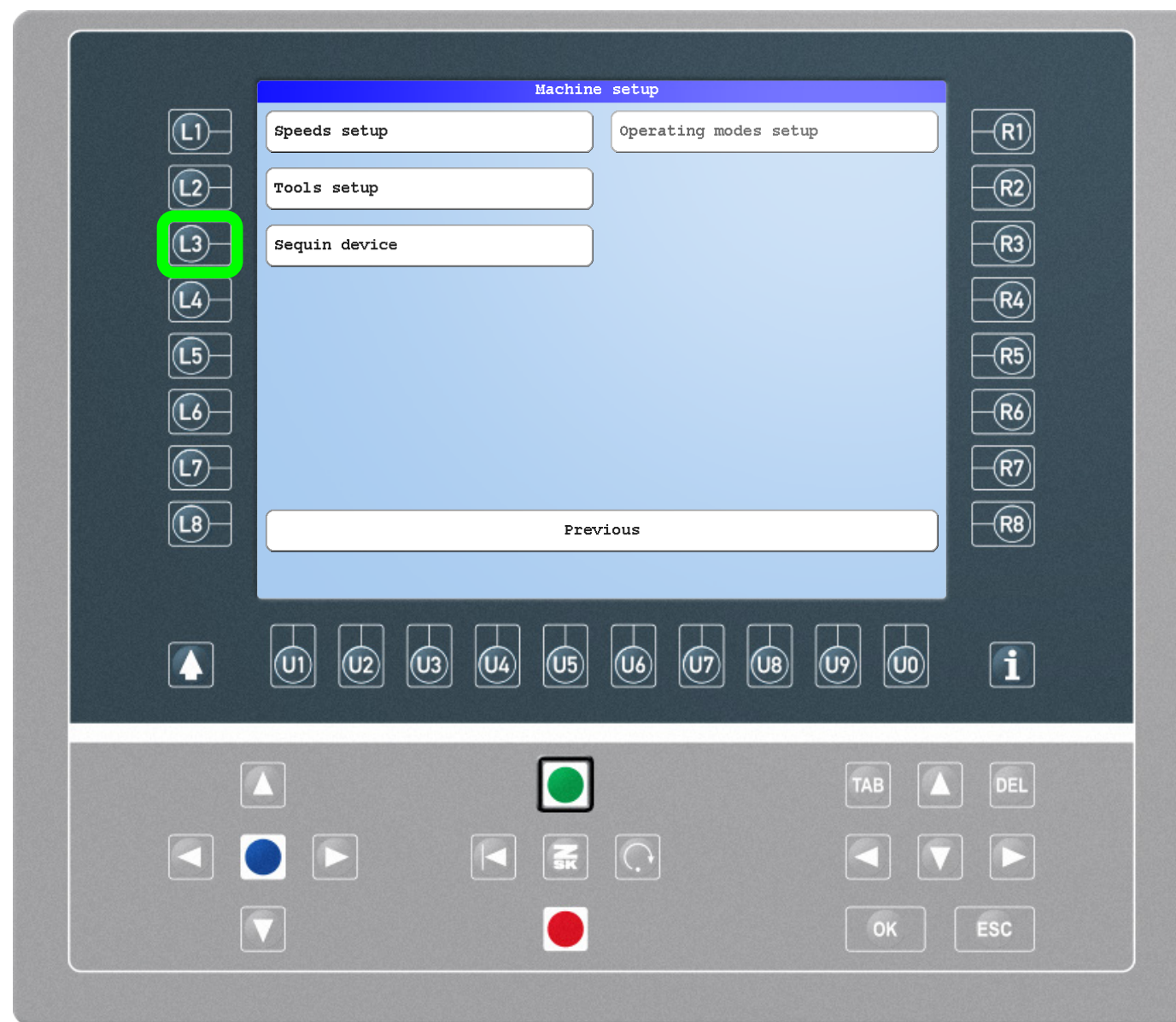
Instead of lifting and lowering the sequin device as a whole, only the feeder is moved backwards. For thread trimming the sequin device is not lifted. In addition, the feeder is moved backwards if no further use of the sequin device is required within the next stitches.

Why?

Increasing the performance of the machine.

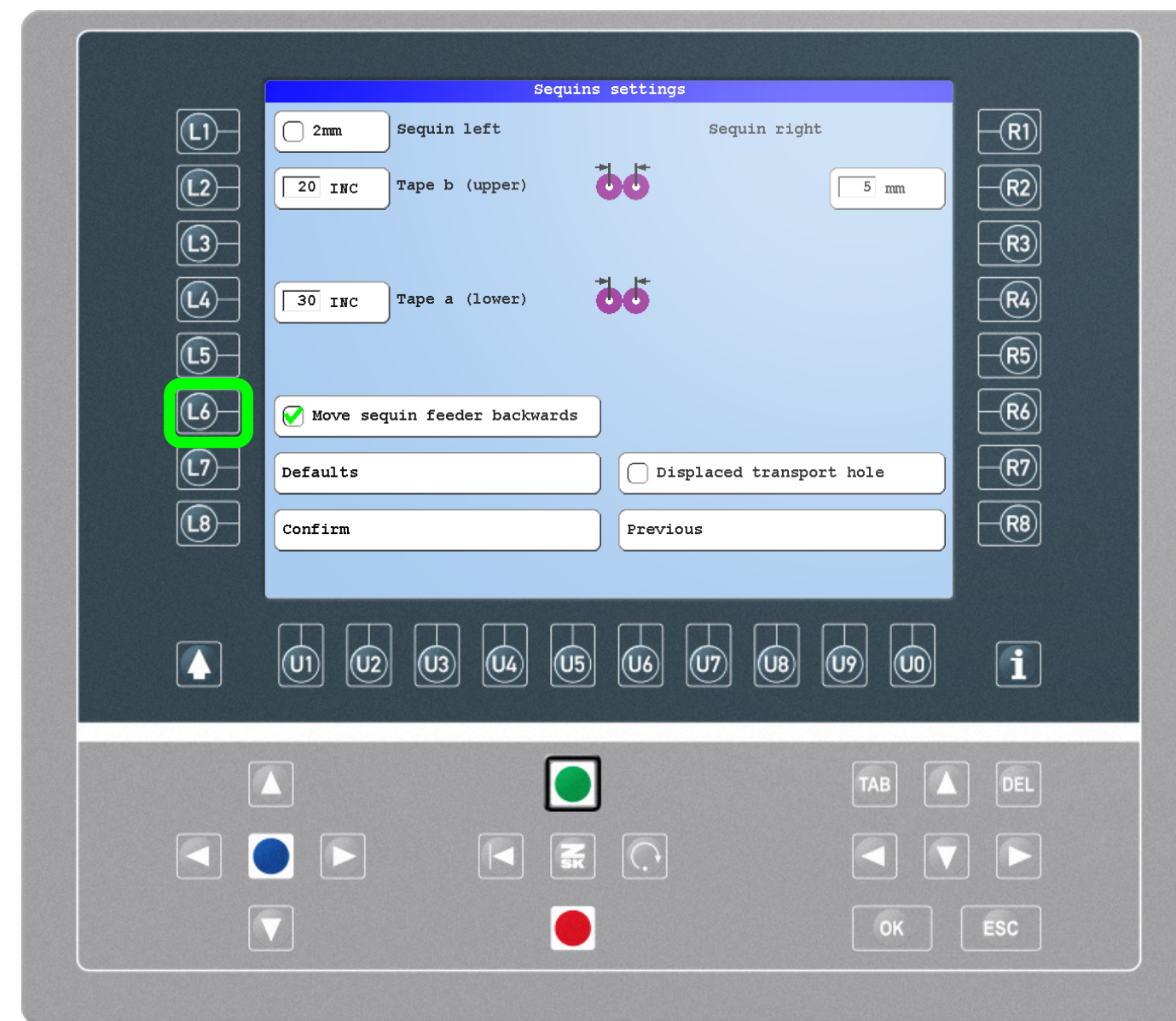
Requirements

MCP35 with CON-Module; Twin Sequin Device



Step1

On the main screen press the L2 function key to enter the machine setup. Press the L3 function key to enter the sequin settings.



Step2

Check the checkbox at „Move sequin feeder backwards“ by pressing the L6 function key.



ZSK Stickmaschinen GmbH
Magdeburger Str. 38-40
47800 Krefeld, Germany

Fon: +49 (0) 2151 444 0
Fax: +49 (0) 2151 444 170
E-Mail: zsk@zsk.de