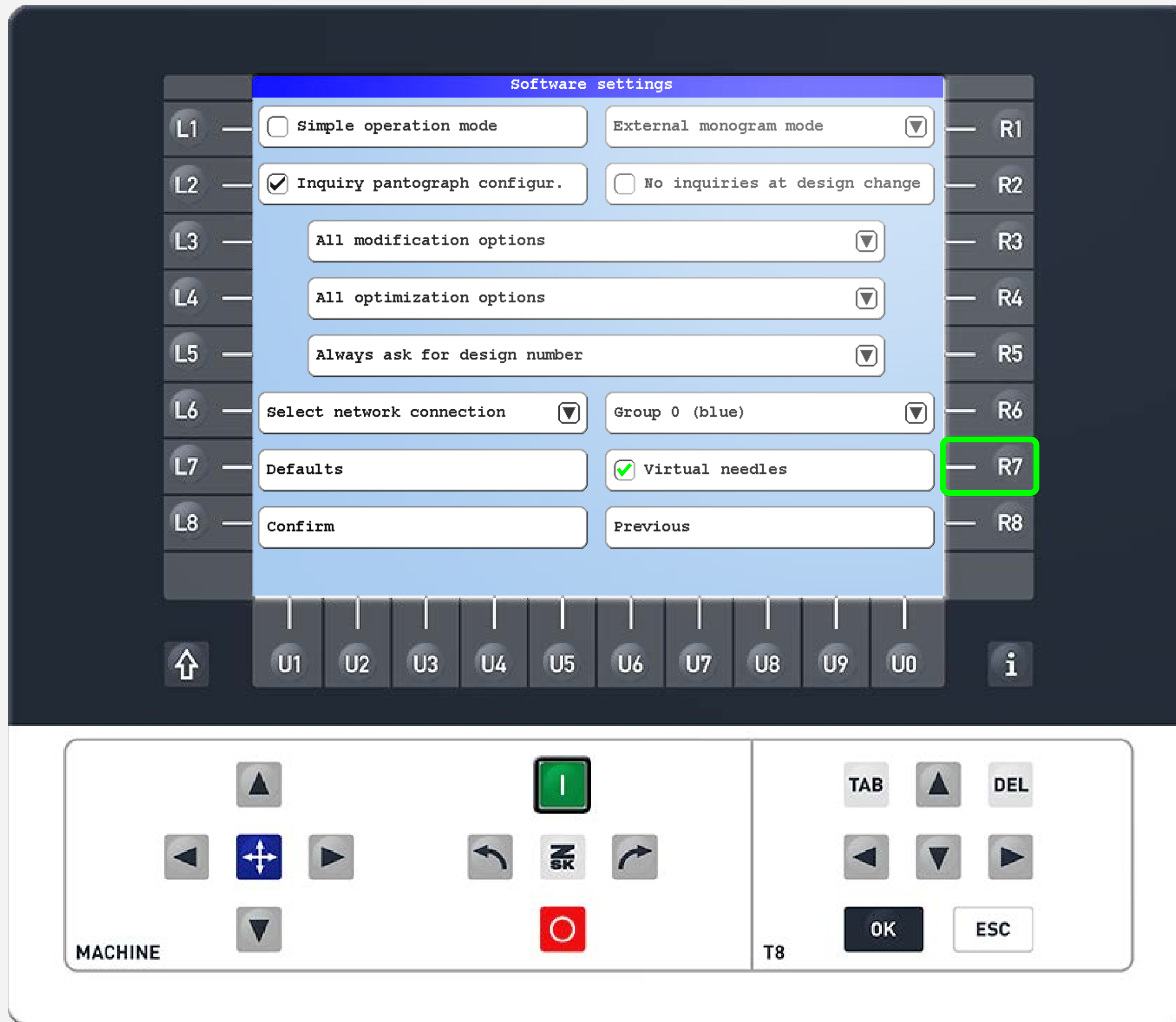




VIRTUAL NEEDLES

Did you know this T8 function yet?

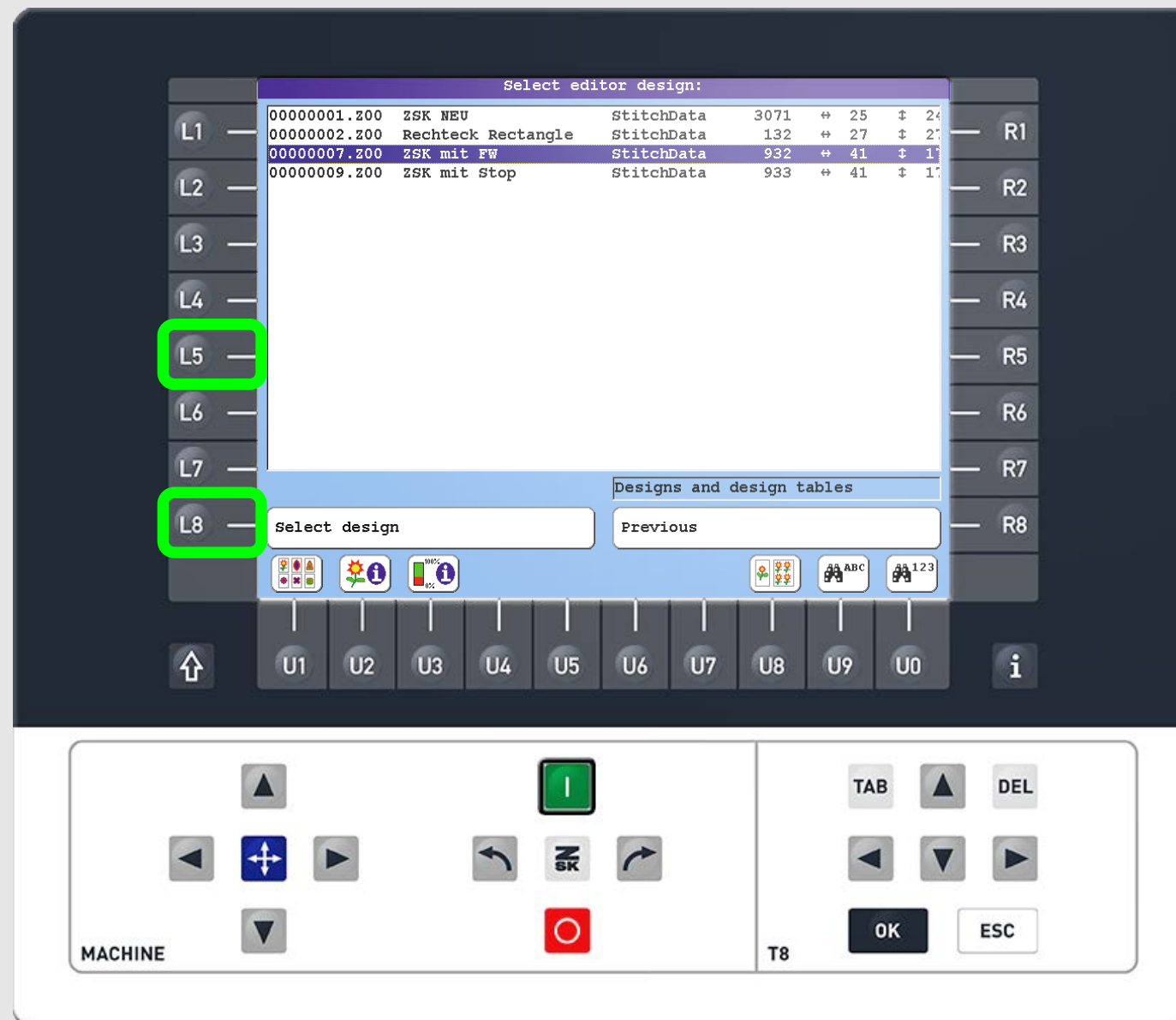


What?

Activate the virtual needles numbers 25-99 in the software settings (Press function keys L7 > R4 and check the checkbox with R7).

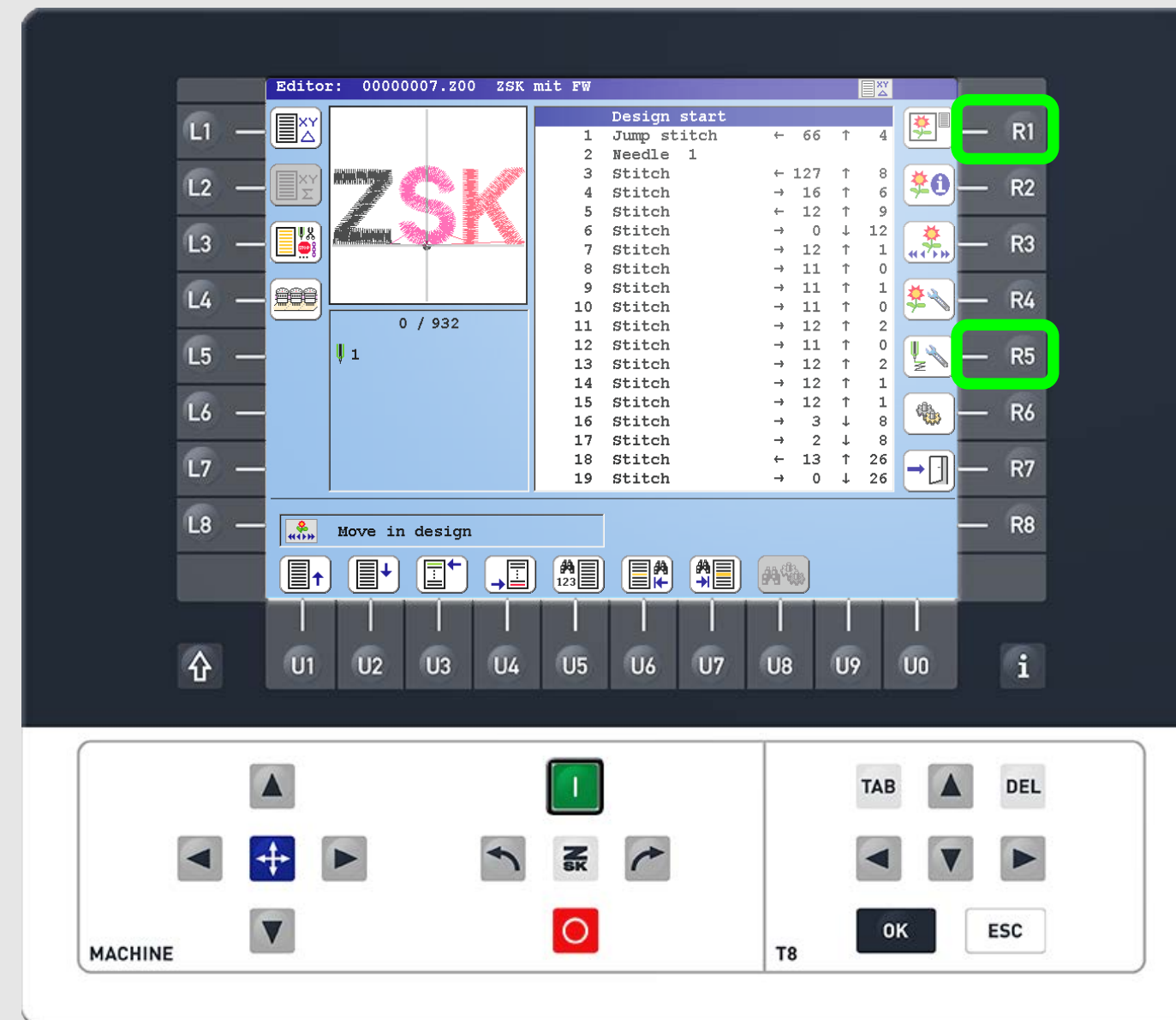
Why?

If .dst files are used or if the design has more than 24 colours, virtual needle numbers help to assign a real needle number or a machine stop. The machine stop is used to change the thread cone.



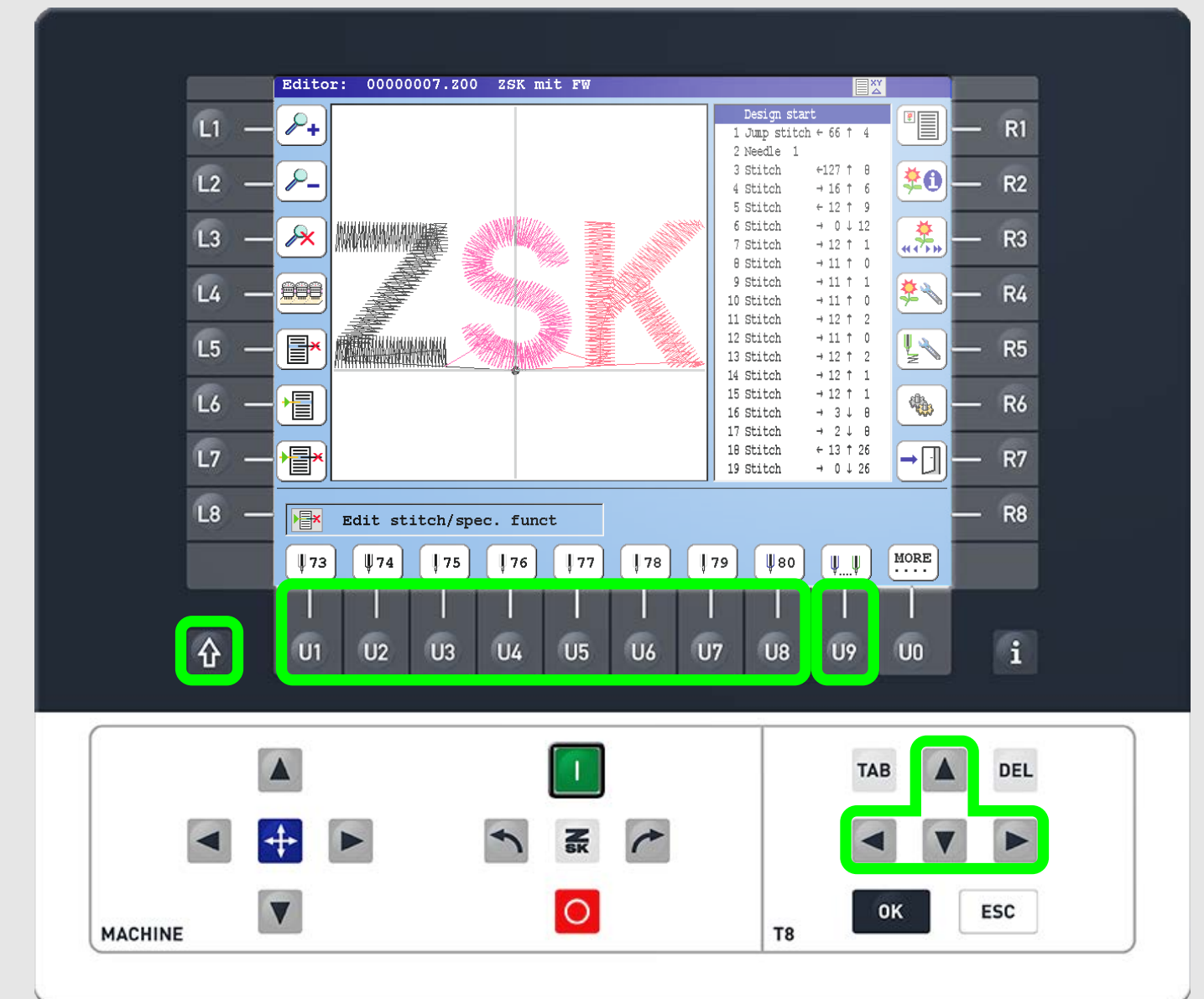
Step1

Load a pattern into the editor from the start screen by pressing the L5 function key. Browse for the desired design with the arrow keys and press L8 to select the design.



Step2

Enter the section table by pressing the R1 function key. Navigate to the section you would like to edit using the arrow keys. Press R5 to assign a needle number.



Step3

Select a needle number using the U1-U8 function keys. For higher needle numbers press U9 until you reach the corresponding needle. For lower needle numbers, press SHIFT + U9.



ZSK Stickmaschinen GmbH
Magdeburger Str. 38-40
47800 Krefeld, Germany

Fon: +49 (0) 2151 444 0
Fax: +49 (0) 2151 444 170
E-Mail: zsk@zsk.de