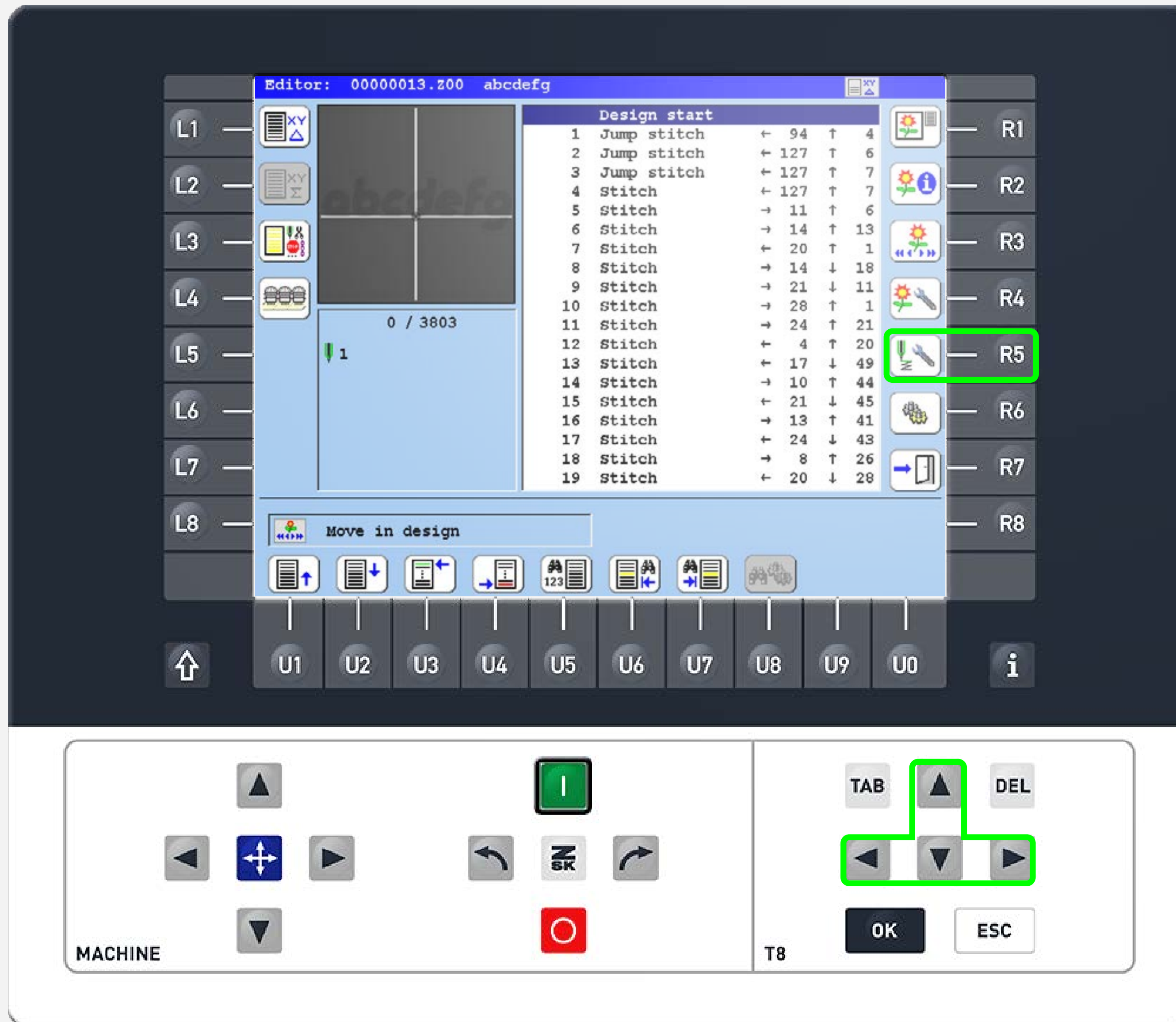




# INSERT STITCH OR SPEC. FUNCTION

Did you know this T8 function yet?



## What?

Add stitches or special functions in your design file such as stops, thread trimming, (de)activating attached devices etc.

## Why?

If the design is created externally or cannot be adjusted by the puncher, it may be beneficial to add special functions directly on the machine using the editor.

## How?

On the start screen press the L5 function key to enter the editor and select the design you want to edit.

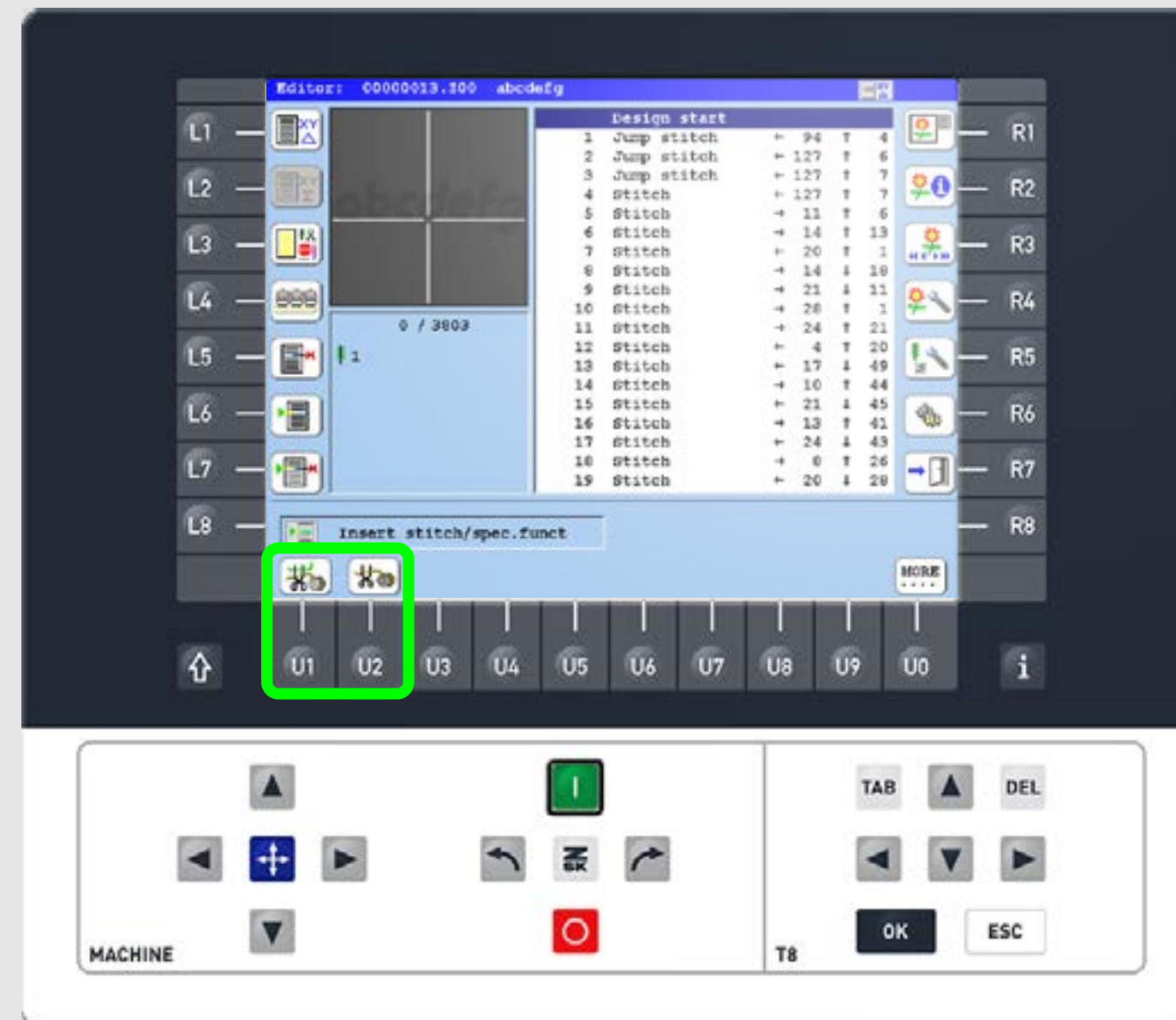
Use the arrow keys to move to the desired position in the design and the R5 function key to edit the selected stitch.



### Step1

Press the L5-L7 function keys to delete, add or exchange a stitch/spec. function. Select the function with the corresponding U1-U0 function key.

Press „more“ multiple times to display all options.



### Step2

This example demonstrates how to add a thread trimming. After selecting the trimming option, further choices are displayed, allowing you to decide whether to trim just the bobbin thread or also the upper thread.



### Step3

When the function is selected press the L8 function key to insert it into the design.



ZSK Stickmaschinen GmbH  
Magdeburger Str. 38-40  
47800 Krefeld, Germany

Fon: +49 (0) 2151 444 0  
Fax: +49 (0) 2151 444 170  
E-Mail: [zsk@zsk.de](mailto:zsk@zsk.de)