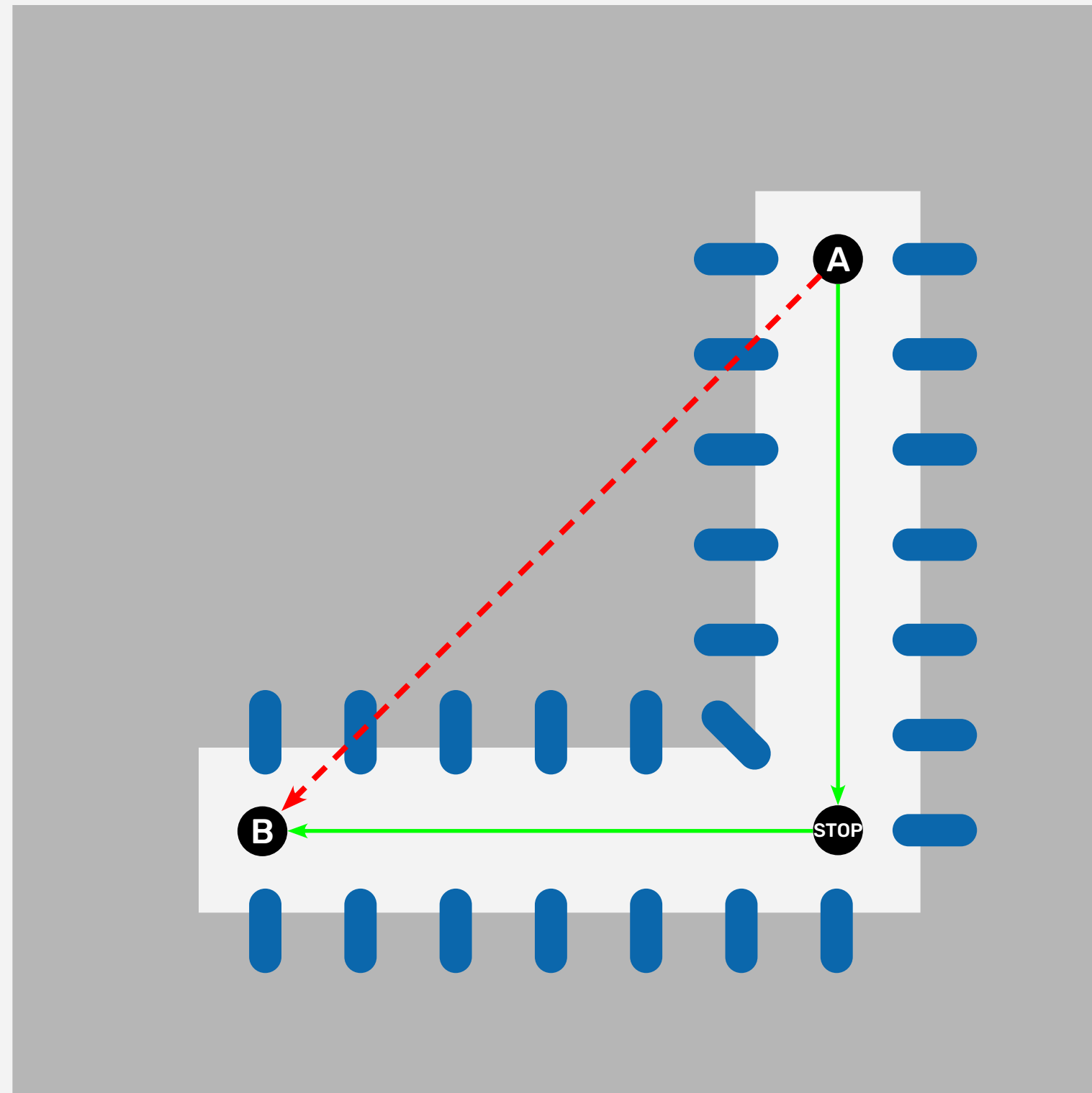




BYPASSING OBSTACLES ON FRAME

Did you know this T8 function yet?

Frame



What?

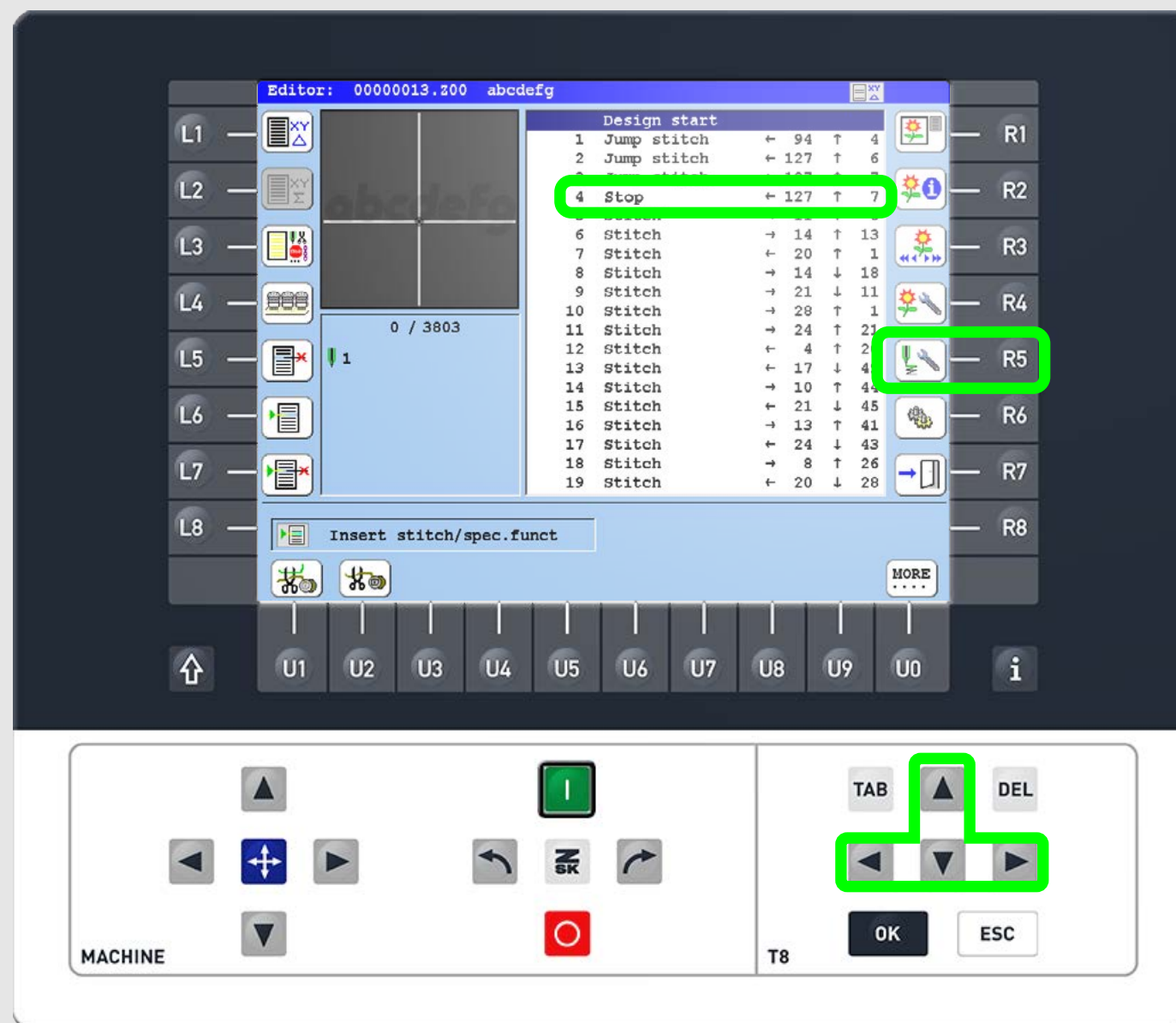
It's possible to move from one position to the next within a design—while avoiding obstacles on the frame.

Why?

By default, the pantograph moves directly to the next stitch point (red line). If obstacles like clamps or raised fabric elements lie in its path, bypassing can help avoid collisions.

How?

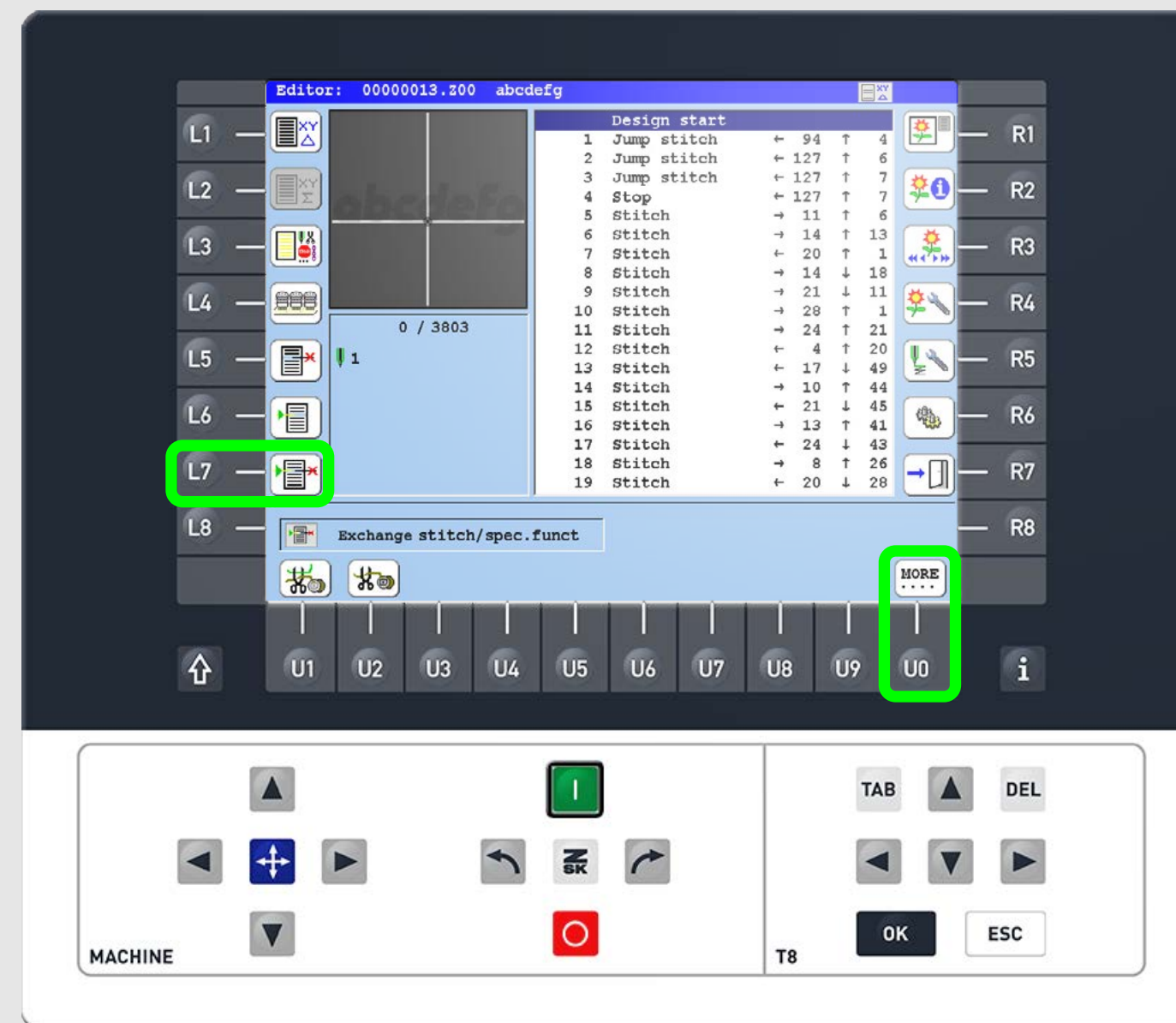
The pantograph's path can be created using a punch program of your choice (green line). Simply place a stop in your design like indicated. In the T8 control system, this stop can be replaced automatically, eliminating the need for manual intervention during embroidery.



Step1

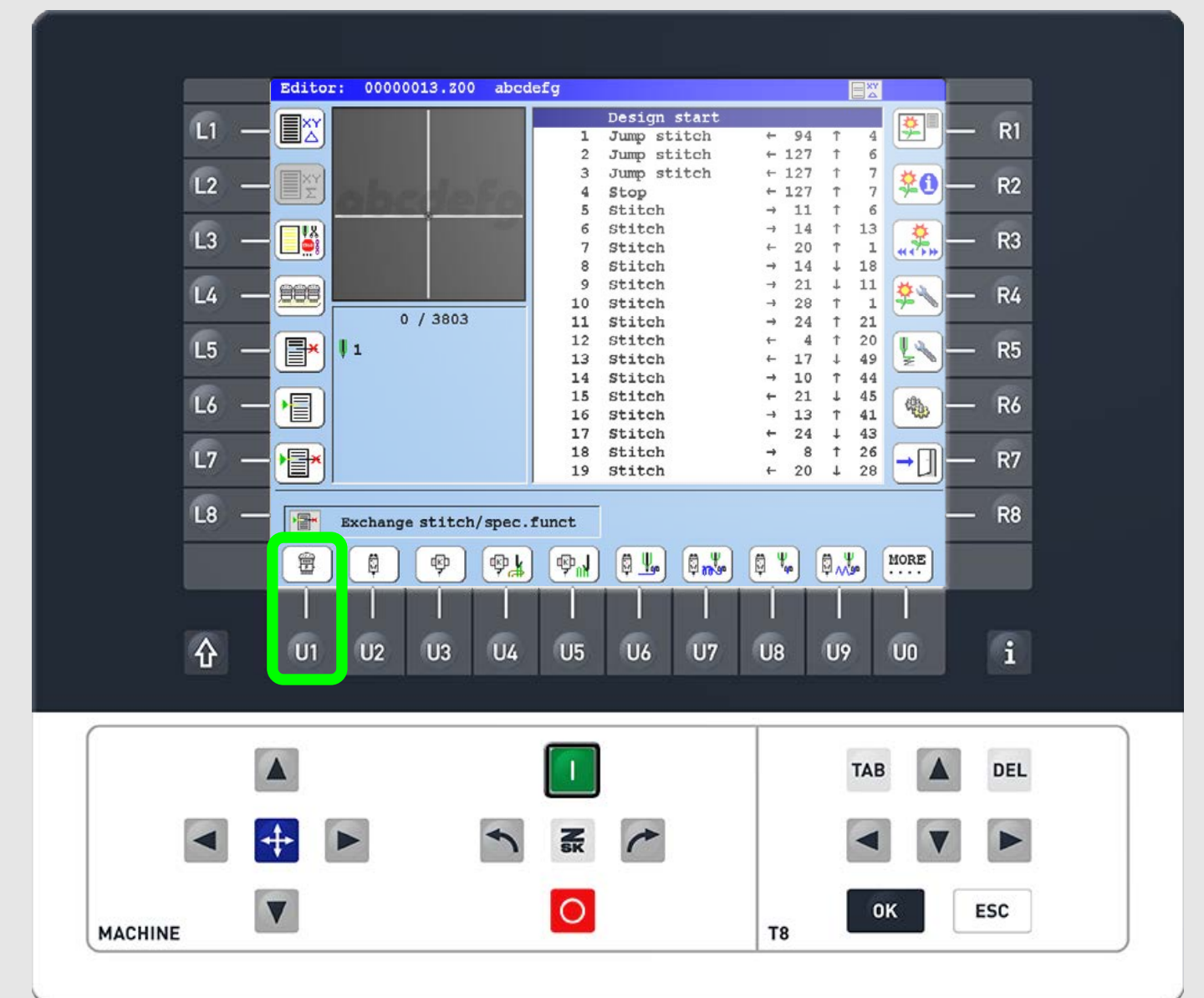
On the start screen, press the L5 function key to enter the editor and select the design you want to edit.

Use the arrow keys to move to the desired Stop in the design and the R5 function key to edit the selected stitch.



Step2

Press the L7 function key to edit the previously inserted Stop. Use the U0 key until the head type change function is displayed.



Step3

Select the head type change with the corresponding function key. Exchange the Stop with the head type change function (choose current head type). Save design as usual. Now the machine's pantograph moves to this spot and continues without manual intervention.



ZSK Stickmaschinen GmbH
Magdeburger Str. 38-40
47800 Krefeld, Germany

Fon: +49 (0) 2151 444 0
Fax: +49 (0) 2151 444 170
E-Mail: zsk@zsk.de