



# Operation manual

## T8-Appendix

### CHALLENGER-Frame limitation



02421V10 [GB] - 2016

Subject to change!  
Änderungen vorbehalten!

© ZSK Stickmaschinen GmbH

Printed in Germany

[ GB ] 02421V10

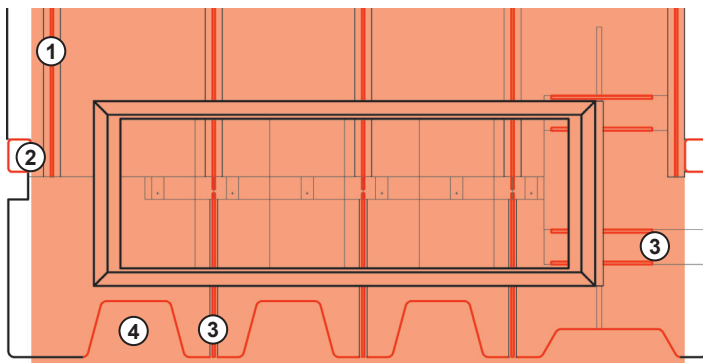
## 1. T8-Appendix: CHALLENGER-Frame limitation

### 1.1 Safety guidelines



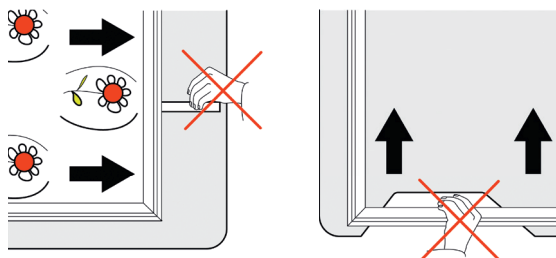
- CAUTION! – The pantograph travels at a very high speed! Do not rest on the work table or lean against the table recesses within the working range of the pantograph (Fig. 1)! A collision with the high-speed pantograph can cause bruising and injuries resulting from crushing of shear forces! (See 1.1.2.

#### 1.1.1 Working range of pantograph



- Keep your hands well away from the insides of supports (2) the table recesses (4) and pantograph slot (1), (3) because of the risk of injury. (See also 1.1.2 „Risk of crushing against pantograph frame“).
- Do not support yourself by the work table.

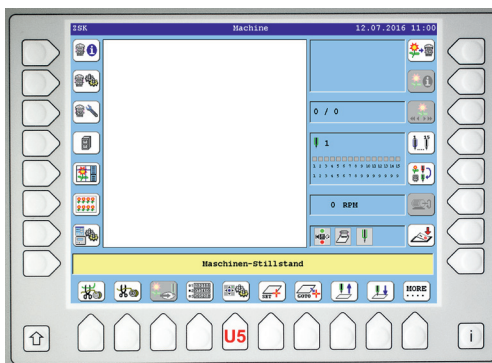
#### 1.1.2 Risk of crushing against pantograph frame



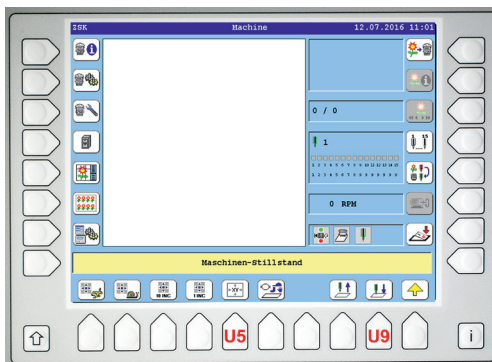
## 1.2 Frame limitation

The function **Frame definition** can be used to define an embroidable pantograph range. The new defined range is smaller than the maximum embroidable range. In the active embroidery process the pantograph can be moved in the new defined range only. The settings are renewable for other needs, as well as a reset of the maximum stitch range.

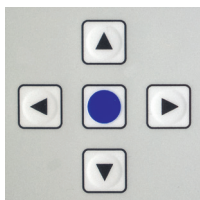
### 1.2.1 Launch function



- Press key **[U5] Pantograph configuration** in the base screen.

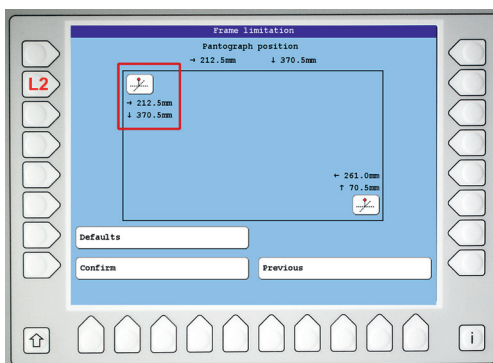


- Press key **[U9] Needle down** to proceed the positioning of the frame limitation with a needle.
- Press key **[U5] Frame limitation**.



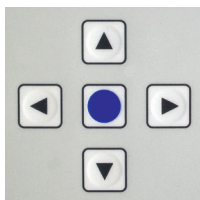
- Switch on the Pantograph positioning key cluster with key **[ZSK]**.

- Position the border frame with the pantograph positioning keys under the dropped needle, so that the needle stands over the top left corner of the new embroidery range.

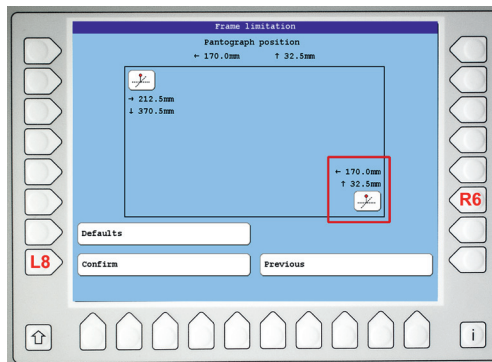


- Press key **[L2]** *Define left top corner.*

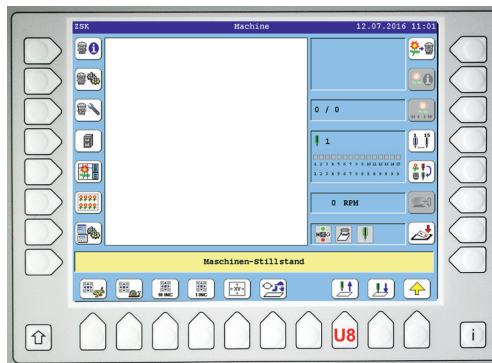
⇒ The value of the actual reached position will be assumed and indicated **top left** in the screen frame.



- Position the border frame with the pantograph positioning keys under the dropped needle, so that the needle stands over the **right bottom corner** of the new embroidery range.



- Press key **[R6]** *Define right bottom corner.*
  - ⇒ The value of the actual reached position will be assumed and indicated **bottom right** in the screen frame.
- Press key **[L8]** *Confirm* to take over the changed value of the frame limitation.



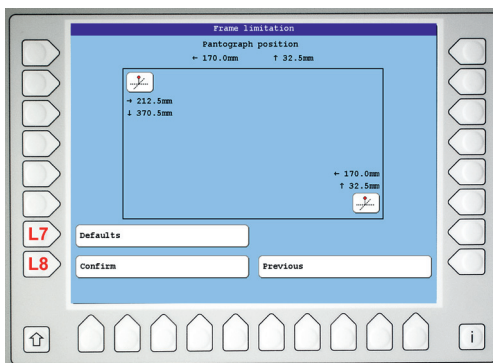
- ⇒ The base screen will faded in.
- Press key **[U8]** *Needle up.*
- Continue with your embroidery in the defined embroidery range.

## 1.2.2 Reset frame limitation



Before a new frame limitation can be positioned, the embroidery range has to be reset to the maximum range.

- Navigate to the dialog **Frame limitation**.



- Press key **[L7] Defaults** to reset the positioned embroidery range.
- Press key **[L8] Confirm** to take over the changed value of the frame limitation.  
 ⇨ Now the embroidery range is get back to the maximum range.
- Now you can position a new embroidery range or continue your embroidery in the maximum embroidery range.









© 2016 ZSK Stickmaschinen GmbH  
Printed in Germany

ZSK Stickmaschinen GmbH  
Magdeburger Str. 38-40  
D-47800 Krefeld  
Germany

[www.zsk.de](http://www.zsk.de)  
[zsk@zsk.de](mailto:zsk@zsk.de)