

ABC

BC
ADEF

ABCDEF

BCDEF
A



User Manual

T8/T8-2 Control Unit Writing



022438V10 [GB] - 2018

Subject to change!
Änderungen vorbehalten!

© ZSK Stickmaschinen GmbH

Printed in Germany

[GB] 02438V10

T8/T8-2 New Functions

General

Download Software-Updates:

<https://www.zsk.de/t8-software.html>

YouTube Video, Install Software Update:

<https://www.youtube.com/watch?v=JNCRShq8pKk>

NOTICE

All discribed functions of the control unit T8-/T8-2 will be started at the Base Screen (BS).

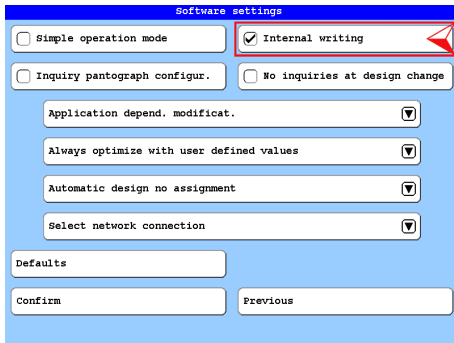


The keys used in the function descriptions are shown in the above T8-/T8-2-figure.

Monogram Machine/Writing

The **Writing** tool of the T8 control unit can be used to generate simple single-line, multi-line and circular monograms. There are seven font families with a total of 30 fonts in various sizes available, as well as various options for arranging a lettering. The generated monograms are stored in the memory.

Activate Function



Switch on the function **Writing**. Starting from the basic screen of the T8 control unit, press the following buttons:

- [L7] *Software-/hardware settings*
- [R4] *Software settings*
- [R1] *Internal writing*

If the Internal monogram technology button is activated, the function **Writing** is activated and can also be accessed via the function [R1] **Select machine design** (Start B). If the button is deactivated, the function **Writing** is switched off and is only possible via the function **Editor** (Start A).

Start Writing

The function **Writing** can be started via the design editor (**Start A**) or via the function **Select machine design** (**Start B**):

Start A

Start B

Select editor design:

00000004.200	opkimmoplm	StitchData	2625	± 214	± 112
00000005.200	Müller	StitchData	1420	± 43	± 17
00000006.200	abcgfe	StitchData	1541	± 42	± 17
00000007.200	ZSK Stickmaschinen G	StitchData	19575	± 584	± 361
00000008.200	ZSK Stickmaschinen G	StitchData	19575	± 584	± 361
00000009.200	abcdef	StitchData	4503	± 125	± 74
00000010.200	ZSK Stickmaschinen G	StitchData	14703	± 459	± 282
00000011.200	Kreuz Cross	StitchData	1603	± 400	± 400
00000012.200	Kreuz Cross	StitchData	1603	± 400	± 400
00000013.200	Kreuz Cross	StitchData	1603	± 400	± 400
00000014.200	Kreuz Cross	StitchData	1603	± 400	± 400
00000015.200	Rechteck Rectangle	StitchData	803	± 200	± 200
00000021.201	Leonardo Da Vi	StitchData	30788	± 200	± 202
00000024.200	ABC	StitchData	3090	± 74	± 54
00000025.200	Leonardo Da Vi	StitchData	18800	± 201	± 202
00000025.201	Leonardo Da Vi	StitchData	18800	± 201	± 202
00000026.200	ZSK	StitchData	2186	± 66	± 30
00000027.200	ABCDEF	StitchData	5672	± 163	± 55
00000028.200	ABCDEF	StitchData	5680	± 181	± 104

Select design: Previous 2x

Writing

Single line

Multiline

Circular clockwise

Circular counterclockwise

Start A via function design editor

- Press the button **[L5] Editor**.
- Press the button **[R8] Previous 2x**.
⇒ The selection dialog **Writing** is displayed.

Start B via function Select Machine design

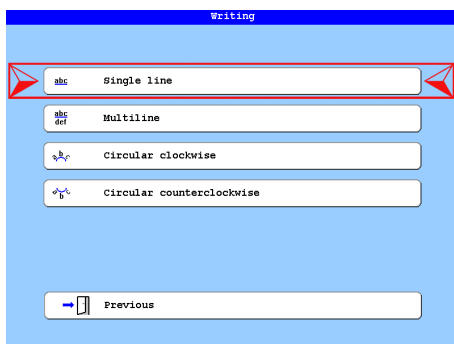
- Press the button **[R1] Machine design**.
- Press the button **[U6] Activate operating mode Monogram Machine**.
⇒ The selection dialog **Writing** is displayed.

Selection dialog **Writing**

In the selection dialog **Writing**, you determine which monogram type should be created with the function. Here you can choose between single-line, multi-line and circular text. Circular text can be created in a clockwise or counterclockwise direction.

Single-line Monogram

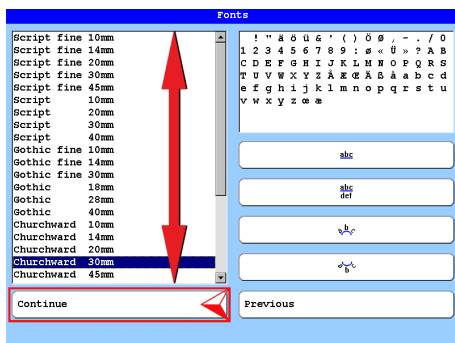
In the following example, the generation of a single-lined monogram is drescribed. The generation of the other types of monograms is similar and differs only in appropriately adapted dialogs described in the chapter **Setting dialogs of monogram types**.



- Press the button **[L2/R2] Single line**.

NOTICE

All selectable functions first lead to the corresponding selection dialog **Fonts**.



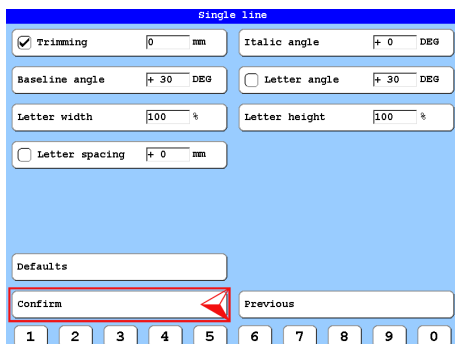
- Use the arrow keys [▲], [▼] to select the desired font from the list.

There is a choice of 30 fonts available. The available characters are displayed in the upper right preview window of the dialog.

The buttons [R4] - [R7] lead to a preview of the selected font.

- Press the button [L8] **Continue**.

In the setting dialog **Single line**, the font settings can be made by entering values and switching ON or OFF specific functions.

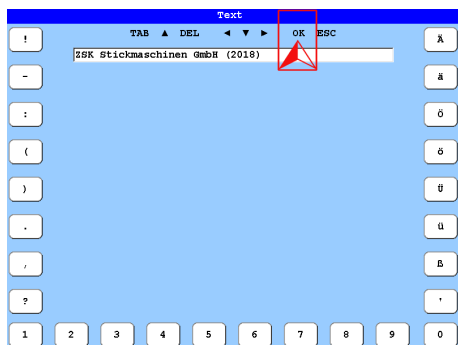


- [L1] *Trimming X mm*
- [L2] *Baseline angle X DEG*
- [L3] *Letter width X %*
- [L4] *Letter spacing X mm*

- [R1] *Italic angle X DEG*
- [R2] *Letter angle X DEG*
- [R3] *Letter height X %*

- Press the button [L8] **Confirm**.

- Enter the desired monogram text in the input dialog *Text*.



[L1 - L8] Letters a-h (with Key [SHIFT] A-H)

[U1 - U0] Letters i-r (with Key [SHIFT] I-R)

[R8 - R1] Letters s-z (with Key [SHIFT] S-Z)

Switching the button functions:

1x [TAB] Uppercase letter

2x [TAB] Digits & Special characters

3x [TAB] Digits & Additional special characters

[▲] [◀] Cursor 1 character to the left

[▼] [▶] Cursor 1 character to the right

[DEL] Deletes the character to the left of the cursor.

[ESC] Back to the previous dialog.

[OK] confirms the dialog and shows the design head as a preview.

Invisible buttons in the dialog *Text*:

[i] Clears the entire text.

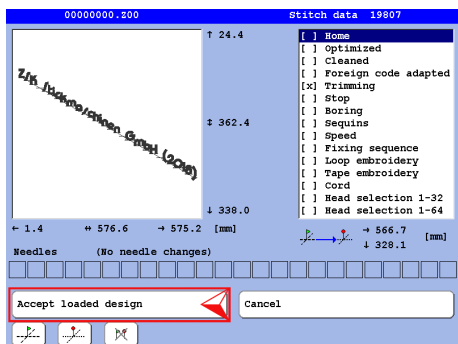
[Shift] + [◀] Start of text

[Shift] + [▶] End of text

[Shift] + [TAB] Text input via barcode reader.

- Press the key [OK] in the cursor block of the T8 controll unit.

⇒ The design head of the created monogram is displayed.



[U1] Mark starting point of design

[U2] Mark end point of design

[U3] Unmark design start- and end point

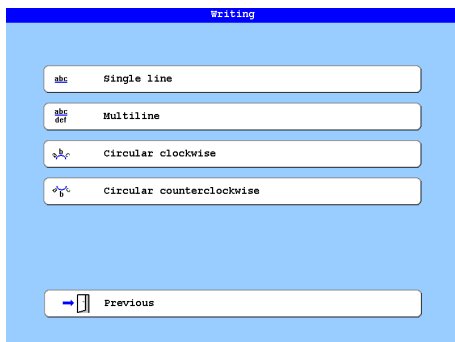
[L8] Accept loaded design

[R8] Cancel

- Press the button [L8] *Accept loaded design*.

⇒ The created monogram is transferred into the machine and can be embroidered now.

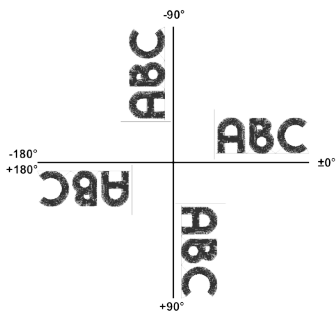
Setting dialogs of monogram types



With the function **Writing** can be generated simple monograms. The different monogram types are created in principle like a single-line monogram. However, there are different setting dialogs for the respective monogram types, which are explained below.

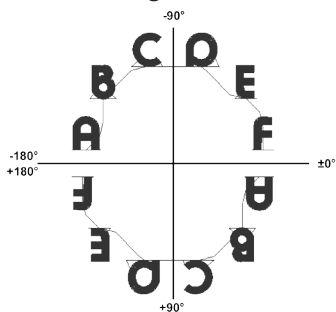
Position and start coordinates

Straight monograms



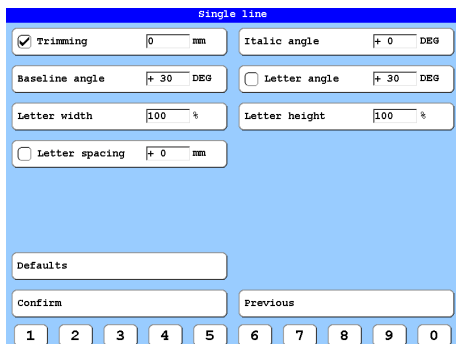
Examples of position angles of the baseline for straight monograms.

Circular monograms



Examples of baseline start and end points for circular monograms.

Single-line Monogram



[L1] *Trimming X mm*

Distance in mm, from which the thread should be cut. The function can be switched on or off.

[L2] *Baseline angle X DEG*

The baseline is tilted and the text is adjusted to the tilt.

[L3] *Letter width X %*

Setting the letter width in percent.

[L4] *Letter spacing X mm*

Setting the letter spacing in mm. The function can be switched on or off.

[R1] *Italic angle X DEG*

The individual letters are inclined.

[R2] *Letter angle X DEG*

The individual letters are rotated. The function can be switched on or off.

[R3] *Letter height X %*

Setting the letter height.

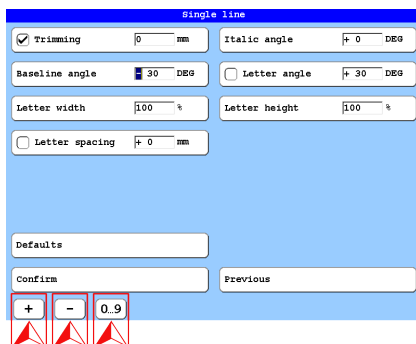
[L7] *Defaults* - Resets the dialog entries to the default settings.

[L8] *Confirm* - Leads to the corresponding input dialog *Text*.

[R8] *Previous* - Ends the dialog and returns to the previous dialog.

[U1]-[U0] *Digits 1-0*

[TAB] - Leads through the input fields.



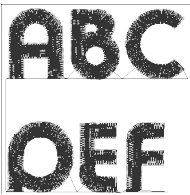
The dialog box is titled "Single line". It contains several input fields and checkboxes:

- ☒ Trimming: 0 mm
- Italic angle: 0 DEG
- Baseline angle: 30 DEG
- ☐ Letter angle: 30 DEG
- Letter width: 100 %
- Letter height: 100 %
- ☐ Letter spacing: 0 mm
- Defaults: (empty field)
- Confirm: (empty field)
- Previous: (empty field)
- Buttons: +, -, 0.9 (each with a red triangle icon)

When the input fields are marked, the dialog display switches over and the buttons **[U1]** - **[U3]** are displayed.

- [U1]** (+) Positive sign
- [U2]** (-) Negative sign
- [U3]** 0 ... 9 - Numerical entry

- [◀]** Cursor to the left
- [▶]** Cursor to the right



Multiline monogram

Multiline

☒ Trimming mm

Italic angle DEG

Baseline angle DEG

☐ Letter angle DEG

Letter width %

Letter height %

☐ Letter spacing mm

Line spacing %

Defaults

Confirm

Previous

1

2

3

4

5

6

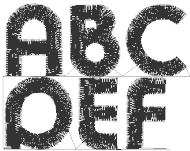
7

8

9

0

The setting dialog **Multiline** is used to adjust the settings for multiline monograms. The same functions apply to this setting dialog as to the setting dialog **Singleline**. In addition, the **Line spacing** between the lines can be adjusted here.



[R5] **Line spacing X %**
Setting the line spacing in percent.

Circular monogram clockwise



Circular clockwise	
<input type="checkbox"/> Trimming	0 mm
Italic angle	+ 0 DEG
<input type="checkbox"/> Letter angle	+ 0 DEG
Letter width	100 %
Letter height	100 %
Start angle	- 180 DEG
End angle	+ 0 DEG
Defaults	Baseline radius 100 mm
Confirm	Previous
1	2 3 4 5 6 7 8 9 0

The setting dialog **Circular clockwise** is used to adjust the settings for circular monograms. The same functions apply to this setting dialog as to the setup dialog **Singleline**. In addition, the **Start angle**, the **End angle** and the **Baseline radius** can be adjusted here.

[L6] **Start angle X DEG** - Setting the starting point of the monogram in DEG.

[R6] **End angle X DEG** - Setting the end point of the monogram in DEG.

[R7] **Baseline radius X mm** - Sets the radius for the baseline of the monogram in mm.

Circular monogram in counterclockwise direction



Circular counterclockwise	
<input type="checkbox"/> Trimming	0 mm
Italic angle	+ 0 DEG
<input type="checkbox"/> Letter angle	+ 0 DEG
Letter width	100 %
Letter height	100 %
Start angle	+ 180 DEG
End angle	+ 0 DEG
Defaults	Baseline radius 100 mm
Confirm	Previous
1	2 3 4 5 6 7 8 9 0

The setting dialog **Circular counterclockwise** is used to adjust the settings for circular monograms. The same functions apply to this setting dialog as to the setup dialog **Singleline**. In addition, the **Start angle**, the **End angle** and the **Baseline radius** can be adjusted here.

[L6] **Start angle X DEG** - Setting the starting point of the monogram in DEG.

[R6] **End angle X DEG** - Setting the end point of the monogram in DEG.

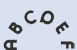



[R7] **Baseline radius X mm** - Sets the radius for the baseline of the monogram in mm.

Setting examples



Singleline Monograms			
	Baseline angle (°)	Letter spacing (mm)	Letter angle (°)
ABC	±0	±0	±0
ABC	±0	+10	+45
ABC	±0	+10	-45
ABC	±0	+10	-90
ABC	±0	+10	+90
ABC	+90	+10	+90
ABC	+90	+10	-90
ABC	+180	+10	+90
ABC	+180	+10	+180

Multiline Monograms			
	Baseline angle (°)	Letter spacing (mm)	Letter angle (°)
ABC DEF	±0	±0	+75
ABC DEF	±0	±0	+120
ABC DEF	-45	±0	+75
ABC DEF	+90	+90	+75
ABC DEF	-90	-90	+75
ABC DEF	+135	+180	+75
ABC DEF	+180	+180	+75

Circular monogram clockwise

	Start angle (°)	Letter angle (°)	End angle (°)	Baseline radius (mm)
	-180	AUS	± 0	50
	-135	EIN ± 0	-45	100
	± 0	AUS	+180	50
	± 0	+180	+180	50

Circular monogram in counterclockwise direction

	Start angle (°)	Letter angle (°)	End angle (°)	Baseline radius (mm)
	+135	AUS	+45	+75
	± 0	+180	+180	50
	± 0	AUS	-180	50
	+45	+180	+135	75



© 2018 ZSK Stickmaschinen GmbH
Printed in Germany

ZSK Stickmaschinen GmbH
Magdeburger Str. 38-40
D-47800 Krefeld
Germany

www.zsk.de
zsk@zsk.de