



INSTALLATION GUIDE Video Tutorial



BACKUP YOUR EPCWIN DATA

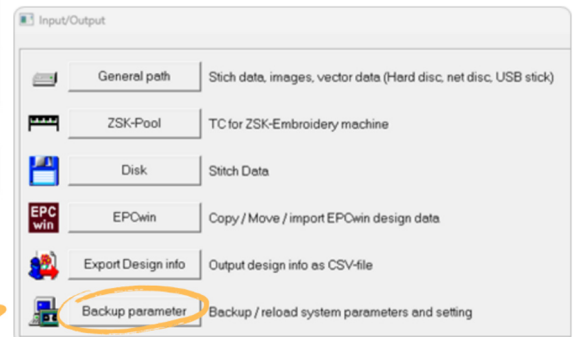
How to make a manual backup of your most important data.

If your previous EPCwin version is older than version No. 6 and you purchased an upgrade to our latest version, we recommend you uninstall it and then perform the initial installation afterwards. Also, if you use EPCwin on another PC, it is advisable to back up your data. Make a manual backup of your system parameters and settings beforehand to ensure that your data is not lost in the process. In addition, it is necessary to save your **design folders**, **block data** and **monograms** separately.

Step 1: Open your current EPCwin version.

Before you start with the installation of our latest version or perform an upgrade, backup your data in your current EPCwin version. Therefore, open the software and select in the main menu the option *"Input/Output"*.

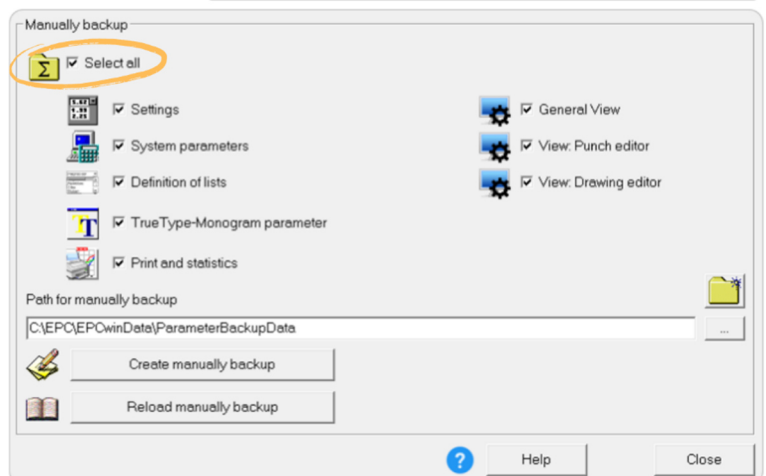
Several options are displayed in the Input/Output dialog box. Select *"Backup parameter"* to perform a backup or to reload your system parameters and settings.

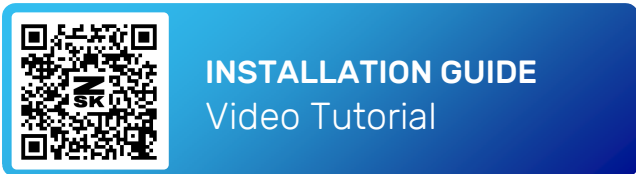


Step 2: Configure your backup settings.

The parameter backup dialog opens. In the middle you will find the *"Manually backup"* where several options can be selected.

Please note: Only the selected options are backed up during the manual backup. Therefore, we recommend you back up all your data to make sure you have not forgotten anything important. Simply tick the checkbox *"Select all"* to save all your data. Of course, you can also save only a few system parameters and settings.

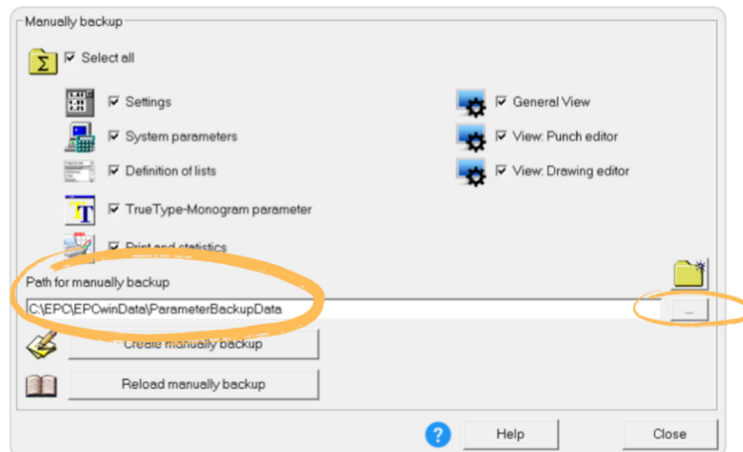




Step 3: Enter a location where you want to save your Backup.

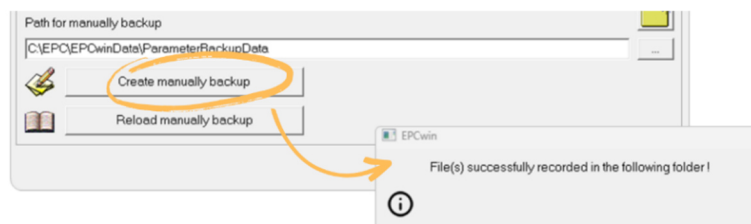
You can enter a location where you want to save your backup or select a path by using the **three dots** button.

We recommend giving the windows directory of the backup a meaningful name, e.g., *EPCwinBackupPreVersion7.1*. In addition, the backup should be saved on a separate hard disk.



Step 4: Start the backup process.

Start the backup process by pressing *“Create manually backup”*. If the backup was successful, you receive a confirmation dialog.

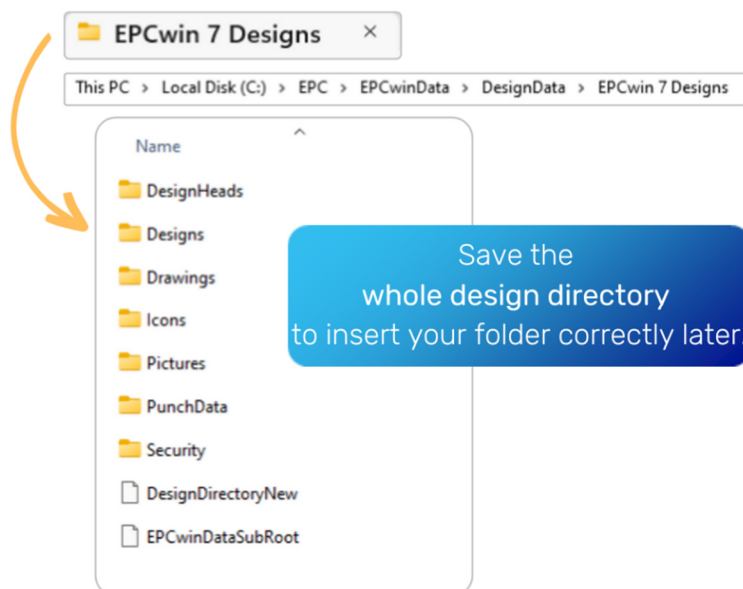


Step 5: Save your design files.

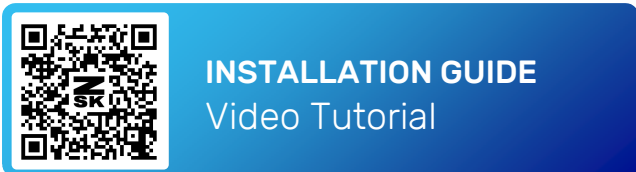
As mentioned in the beginning, it is important to save your design files especially if you have only saved them locally so far. We recommend storing all data in a secure network or cloud right from the start. To save your design data, save the entire directory structure of your design folder.

The picture shows an example of a design folder with its path in your windows Explorer: *C:\EPC\EPCwinData\DesignData\EPCwin7\Designs*.

It depends on the respective storage location. If you do not know the path of your design folders, you can check them in the software itself. They are displayed in the *“organized design directories”*.

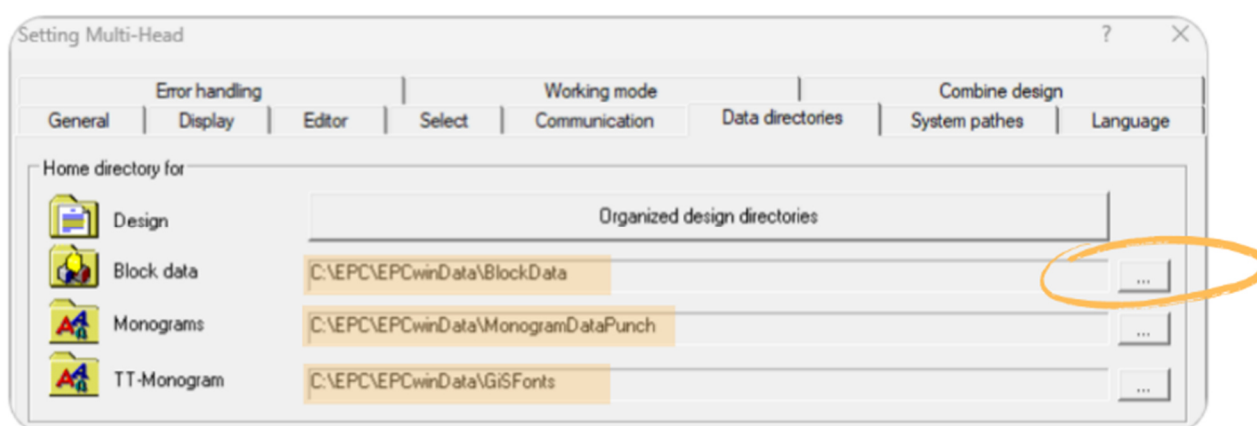


It is important that the directory structure contained in the design folder, i.e., the whole folder, is saved. The folder can then be included as usual via the organisation of the design directories. There you select the import of an existing directory.



Step 6: Save your block data and monograms.

If the block data and monograms are also to be transferred, they must also be saved manually. If you do not know the paths of the folders, you can look them up in the data directories. You can find them in the basic settings of the software. Save the folders separately. Again, it is important to save the entire directory structure so that the folders can be included afterwards. The path of the folders can be changed as usual by clicking on the three dots button.



After you backed up all your data successfully, an upgrade or a new installation can be performed. How to reload the system parameters and settings is explained in our further instructions.