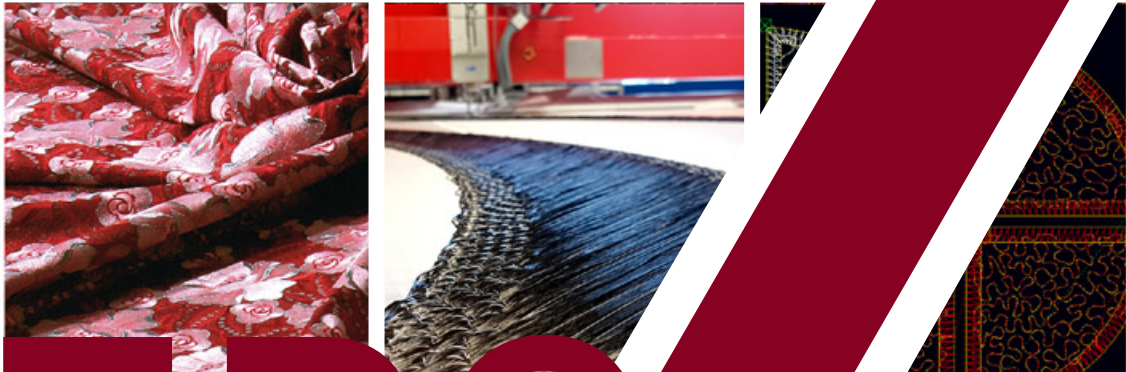
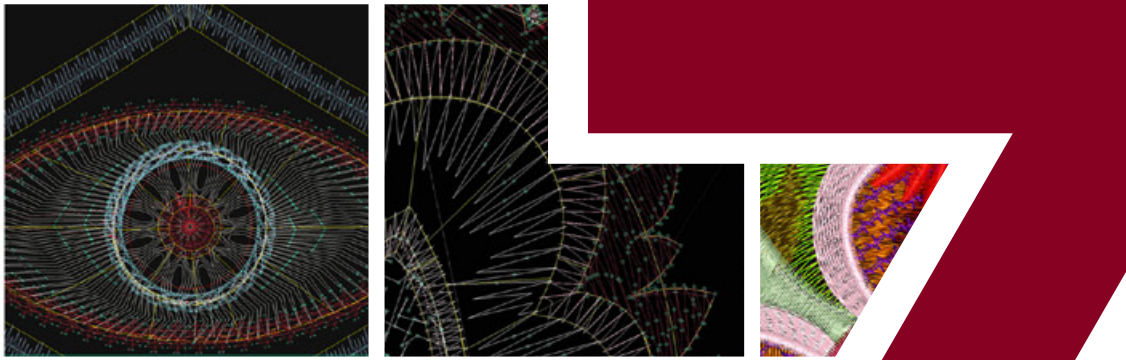
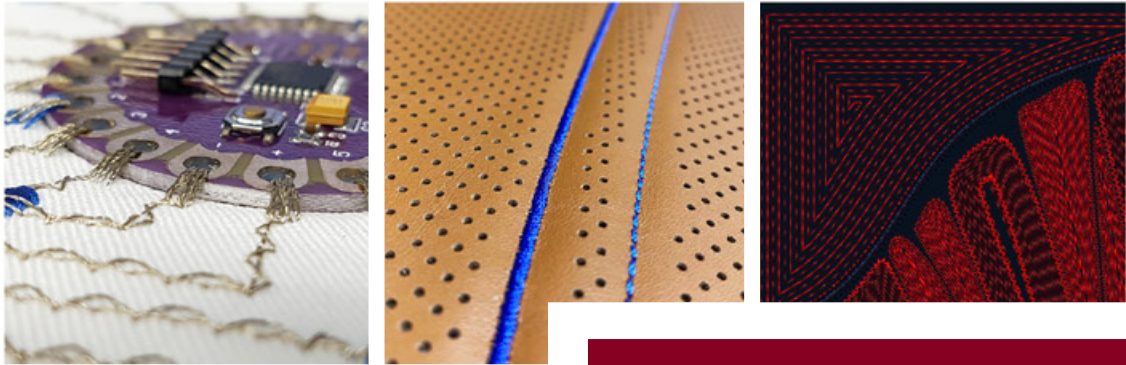




ZSK STICKMASCHINEN



EP CWIN

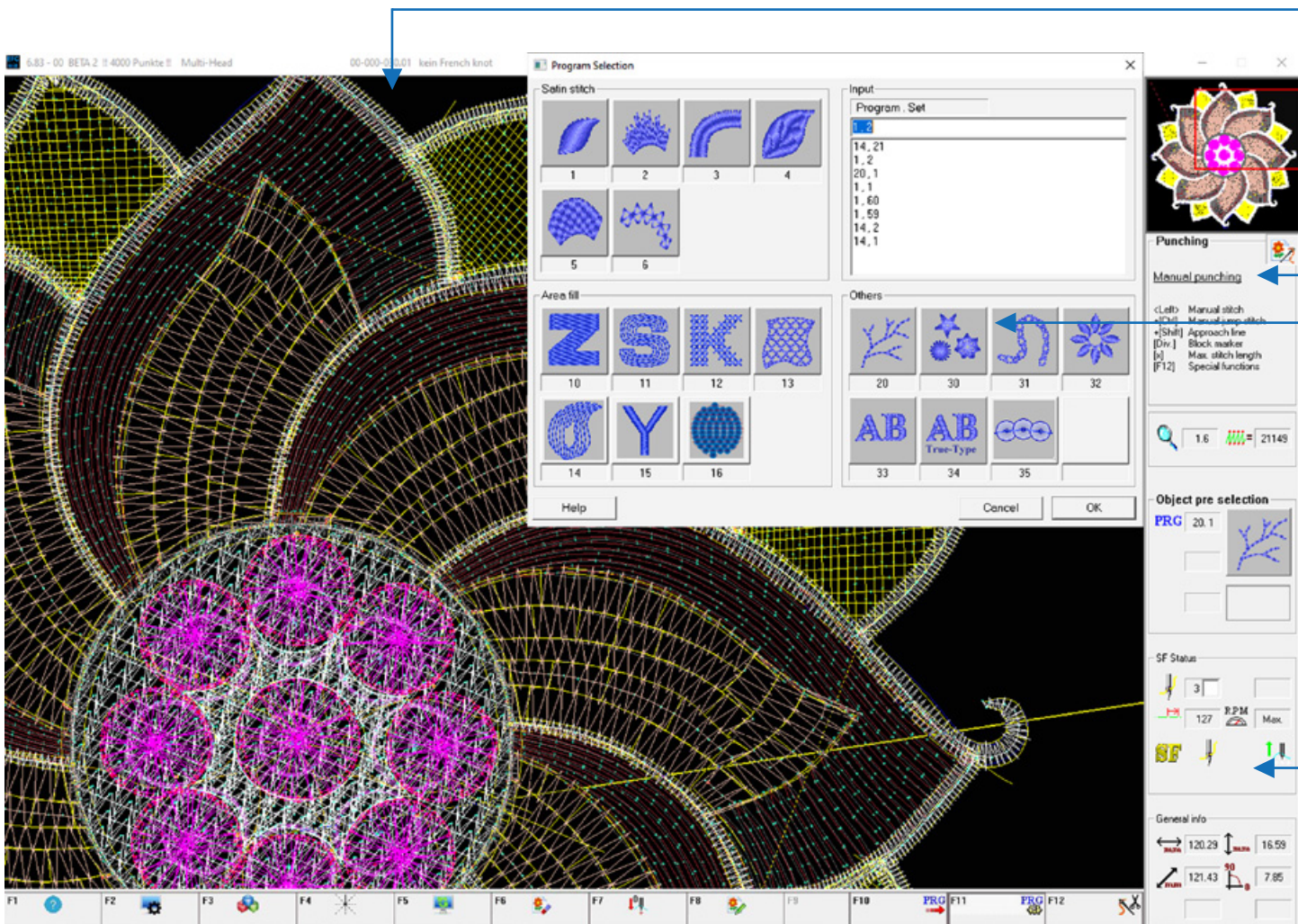
DRAWING • EDITING • DIGITIZING

The high-end creator suite for professional requirements in all sectors of the embroidery and additive textile manufacturing industry.

PROFESSIONAL WORKING LIKE NEVER BEFORE

The program convinces with its wide range of intelligent functions and allows fast and efficient work via shortcuts.

EPCWIN 7 also offers special features for smart textiles and technical embroidery.



Fast operating by the use of ergonomic short cuts

Switch between fully integrated drawing digitizing and editing interfaces

Extensive CAD Drawing program with seamless connection to the digitizing mode

Why EPCWIN?

HIGH STITCH PRECISION

In all embroidery applications and smart textiles success can depend on a single stitch. EPCWIN 7 is outstanding in stitch calculation and precision. Thanks to programmable stitch limitation, angle set ups and stitch filters each design can be controlled stitch by stitch with a precision of 0.1mm.

PROJECT COLLABORATION

You work in teams or research and development? With EPCWIN you can perfectly organize and share your files or parameters for a constant and traceable workflow among multiple users.

SEPARATE COMPONENT LIBRARY

Store your favourite elements and parameters in a separate library and build up designs with constant quality. Save time on design development and keep your design quality constant.

CLOSE MACHINE CONNECTION

Profit from a seamless work flow and full machine control through a direct connection between your ZSK machine and ZSK software. Enhance production efficiency and embroidery quality.

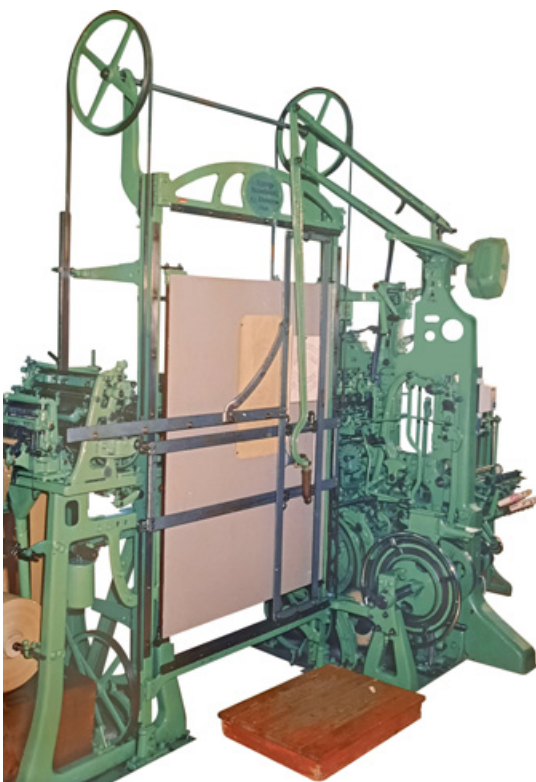
INFINITE CREATIVITY

EPCWIN 7 comes with an extensive range of automatic programs that are developed by experienced people of the embroidery industry. Offer the biggest portfolio of embroidery designs to your customers.

FULL CAD DRAWING PROGRAM

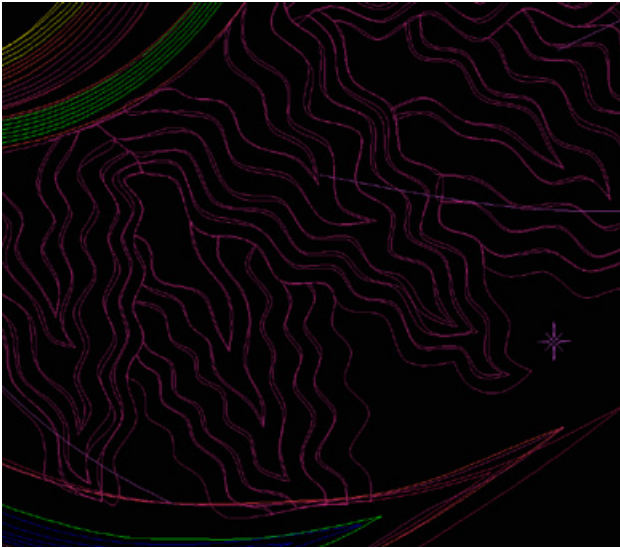
Use EPCWIN for all production steps and create also your vector files with the fully integrated CAD drawing mode.

- Clear work field with focus on functionality
- Side assistant for full control when developing
- Wide range of intelligent automations for easy creation of complex patterns
- Feedback on current machine status at stage of your digitizing process



Create stitch data in the old days:

At this punch machine from approx. 1910 an embroidery pattern template is traced using a pantograph. A manually triggered card punch mechanism punches a sample card or a punched tape according to the drawing.



DRAWING

EPCWIN comes with a full drawing program that is specialized in creating technical drawings as well as complex textile designs. No other external CAD system is necessary. Nevertheless several vector files such as .dxf, .wmf or .ai can be imported and further edited.

ENTER FREE CURVES

Create vector files with splines or free hand curves.

GEOMETRIC FUNCTIONS

Make precise technical drawings with help of geometric shapes and precise measurements. Also add centre points or segment lines to any line or shape.

NEW - DRAWING AUTOMATIONS

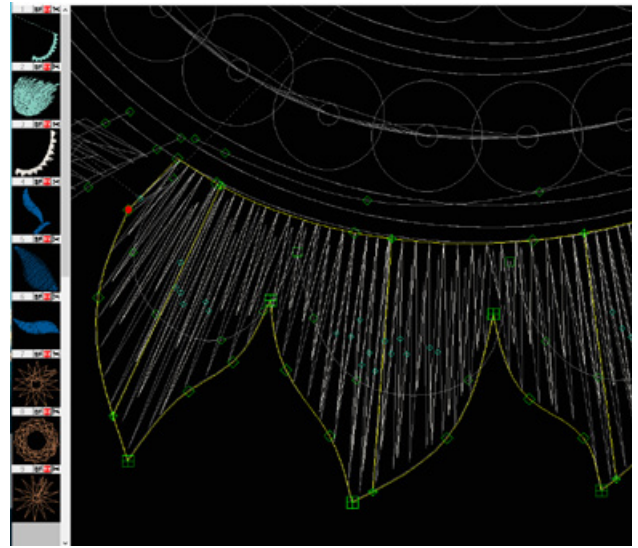
Make use of our interactive drawing programs. Auto fill defined shapes and change their outlines if necessary. All lines can then be used in the digitizing surface for sequins, cords, fill stitches, etc.

- Spiral Fill
- Smart offset function
- Maze Fill

HELP TOOLS

Precise work field with help tools:

- Guides (angled, vertical, horizontal)
- Grid
- Ruler
- Comment text



EDITING

Stay flexible and keep full control over your project by changing drawing as well as stitch data during your digitizing or drawing process.

OBJECT EDITOR

Change the shape and parameters of individual objects, change the stitch directions or adjust settings for optimal stitch results.

BLOCK FILM

Rearrange the order of your embroidery in the block film. Easily insert additional needle changes or easily delete elements.

DRAWING EDITOR

Optimize or adjust your vector data in the drawing editor: Conversion of points, cutting of lines or connections of multiple lines to a single line and many other things are possible.

CONVERT STITCH DATA TO DRAWING LINES

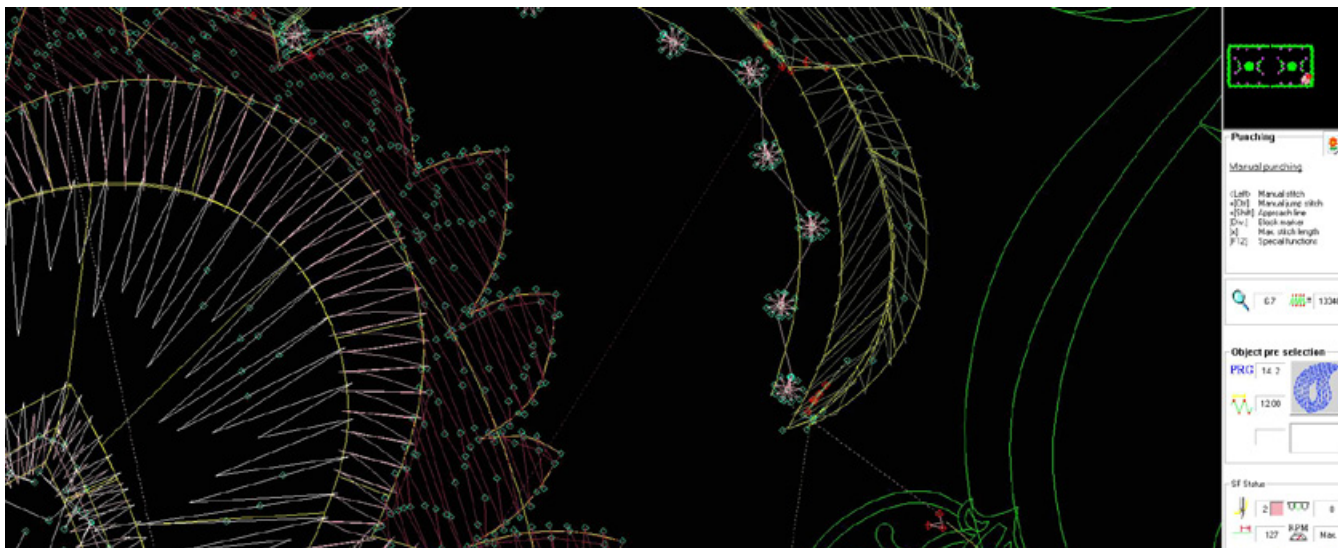
Do you have stitch data and want to use the lines as vector data or other drawing lines in your design? Convert them to drawing lines, make further adjustments, or export them to vector formats for other processes in your production line.

EDITING OF MACHINE COMMANDS

Insert, move or delete machine commands at any position of your design.

GLOBAL EDITOR

Globally adjust settings in your entire design or replace parameters in individual objects.



DIGITIZING

The term “digitizing” or “punching” describes the process of creating stitch data that the embroidery machine is able to read. To create such format users can either integrate drawing data or digitize directly from an image by tracing it. Often designs are a combination of both.

NEW - AUTOMATIC PROGRAMS

Take advantage of an infinite range of unique digitizing automations for easy creation of extraordinary design elements and visual complexity. The quality and look can be controlled at any time via precise embroidery parameters.

STITCH BY STITCH

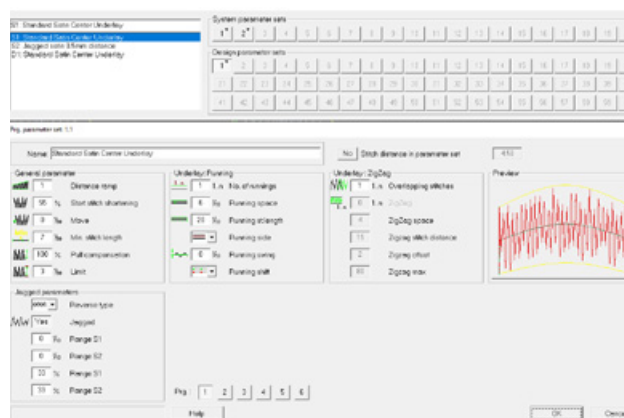
Digitize your projects stitch by stitch and mix manual stitches with automatic scripted programs for maintaining the maximum control while also balancing speed and flexibility of your design process. If you choose to integrate manual stitches, it is possible to set up a limitation of length and angle range to work even more precisely.

STITCH QUALITY BY PARAMETER SET UP

Choose from an extensive range of parameters such as pull compensation, automatic density adjustment, underlay settings, and stitch shortening to modify each embroidery element according to its individual needs. Keep your digitizing quality constant by saving your favourite parameters in your EPCWIN system parameters file for all future projects.

SPECIAL FUNCTIONS FOR FULL MACHINE CONTROL

Maximum control over your embroidery machine with writing all machine settings to any position of your design. Commands such as needle change, Stop, head selection and speed adjustment are only a small glimpse to what is possible.



Automatic Programs

TEAMWORK & DESIGN MANAGEMENT

As our world turns more digital and remote, team collaboration is on the forefront of business acumen. Profit from a software structure that is especially made for digitizing departments and multiple project team members.

Synchronized work stations and team cross filters saves you precious time on organizing projects and makes the all over quality among several users more consistent.

TEAMWORK

SYNCHRONIZE WORK STATIONS

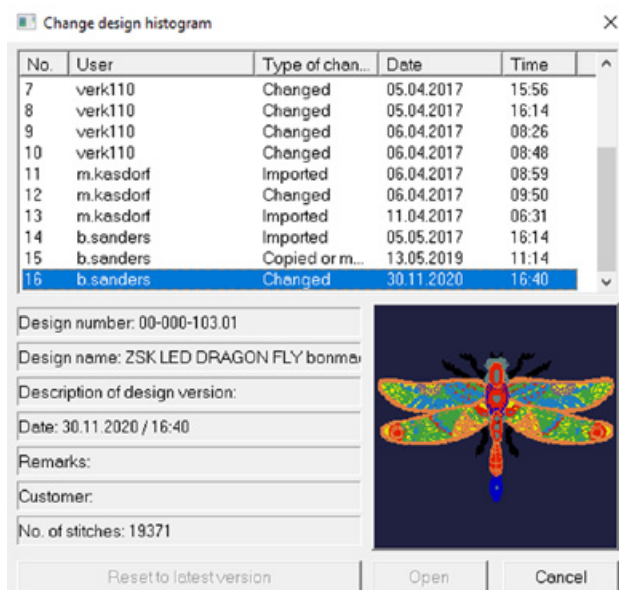
Server storage of work modes, parameters or block libraries for multiple access on several computers.

INDIVIDUAL WORK MODES ON ONE WORK STATION

Pre-set up to 5 different standard design heads, work fields and parameter sets for individual workers and projects. This feature helps to save a lot of time of setting up different design configurations each time.

STAY UP TO DATE ON A PROJECT PROGRESS

With help of the design history it is possible to track who worked on the design at what stage. It is also possible to restore previous versions.



Design Directory

SETUP ASSISTANT

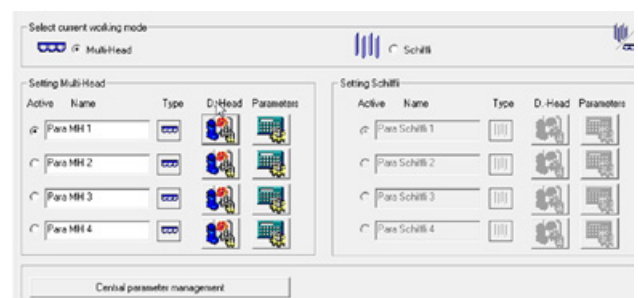
Synchronize the process of assigning search phrases, tags, customers, etc. to your design for consistent spelling. Auto fill a group of selected designs with common tags, groups, etc. and speed up the time for organizing your projects over multiple users.

WRITE PROTECTION

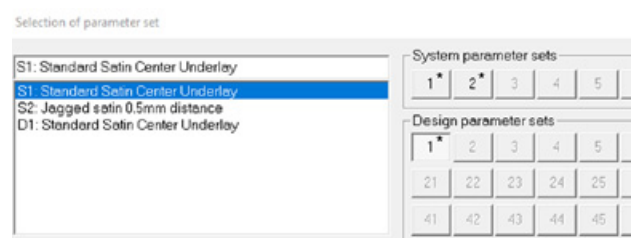
If directories are shared, designs can either be blocked for other users or writing protection can be enabled.

NEW – STORE AND SHARE PARAMETER SETS WITH NAMES

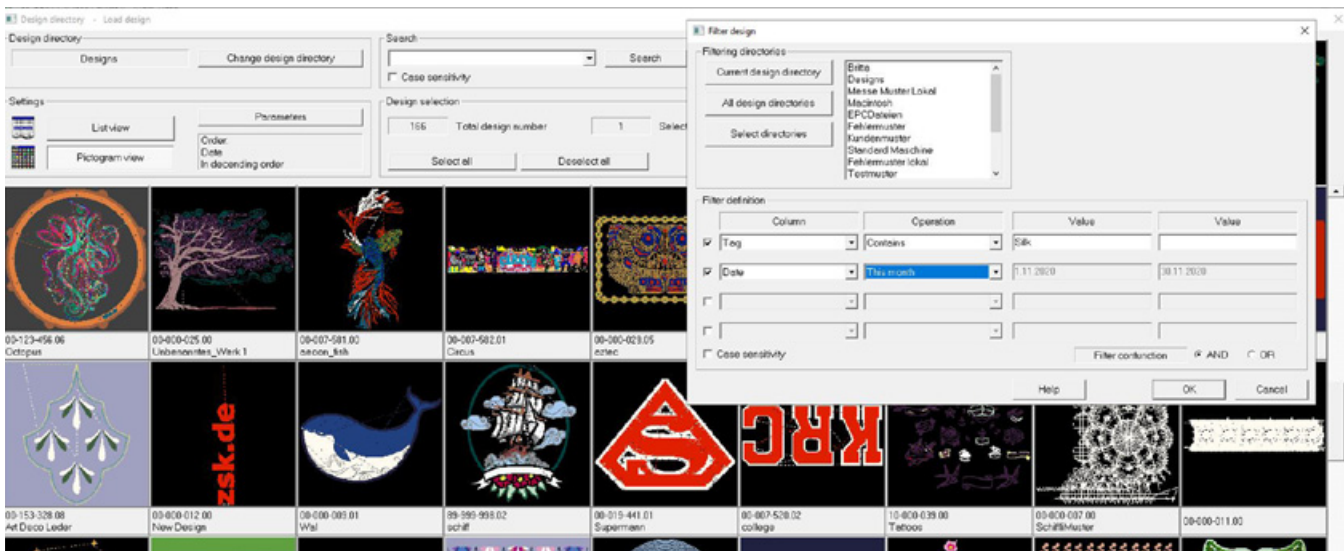
Keep overview within your design or store your favourite parameters with names.



Individual work modes



Parameter Sets



Filter in Design Management

DESIGN MANAGEMENT

CROSS DIRECTORY FILTER FUNCTION

Make Profit from a detailed design info and create tags, customers, base material and projects groups that help you to find your projects on the server as well as locally independent of its directory.

DESIGNHEAD

Leave distinct descriptions of your design and keep track of design statistics to optimize your production.

SEARCH FUNCTION

Browse through your directories with the search function to find the designs via pictogram view or list view.

KEEP OVERVIEW

Store your projects under version numbers or assign tags. This way you can list up each project with its variations. A version description can than store information on its development.

STAPLE EXPORT

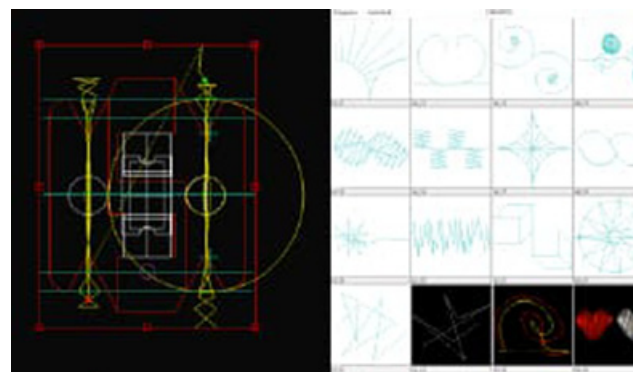
Export a batch of files into numerous stitch formats and choose file names automatically.

BLOCK LIBRARY

Store any kind of stitch or drawing element globally to have easy access to components when creating new designs. Pick a design element from your personal or shared library of blocks and add it to your projects.



Designhead



Block Library

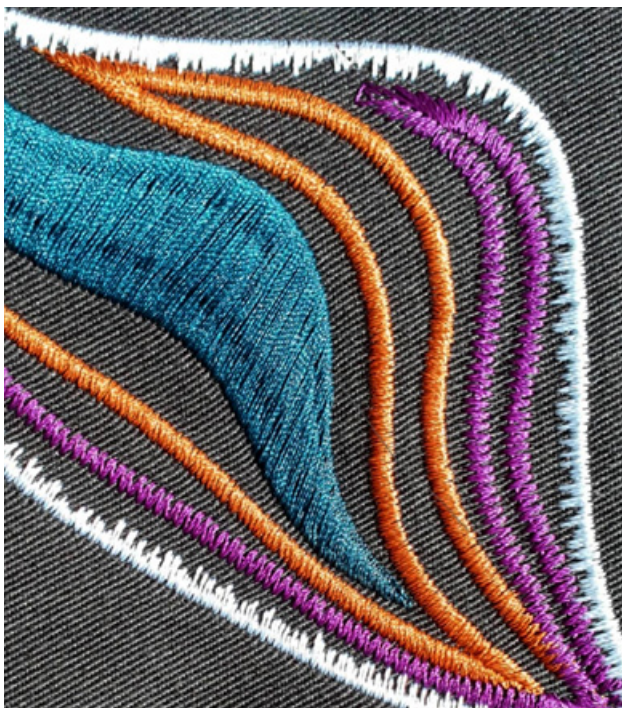
MAKE HIGH QUALITY DESIGNS WITH INFINITE CREATIVITY

Extend your design portfolio and create exciting designs - Make use of market leading automatic programs for unique design elements for all stitch types. Over various setting options the complexity of designs is unlimited for each individual stitch type. EPCWIN 7 comes with a preview window in the parameter settings to give you a first glimpse of your result even before calculation.

WIDE RANGE OF COMPREHENSIVE TOOLS FOR ANY KIND OF DESIGN ELEMENTS

SATIN STITCH

Satin stitches are the stable stitch of embellishment and embroidery. Create high quality and turnable satin stitches with fixed or various width or fill shapes with sub structures. Let the density fade or choose from our marked leading stitch sequence satin or braiding program to create unique stitch effects or imitate hand stitches. Adjust each stitch direction individually or auto generate them over an entire object.



Satin Stitch

FILL STITCH

Use the complex fill stitch programme to evenly fill an area with colour or to make interesting stitch effects by adding macros, stencils, curvy stitch directions, colour shading and modifying other setting based properties. Add holes or additional contours to an object to save time in stitching and to connect your objects up front, or after the fact. Define areas with another parameter set to stay flexible within one area but create interesting design variation throughout an object.

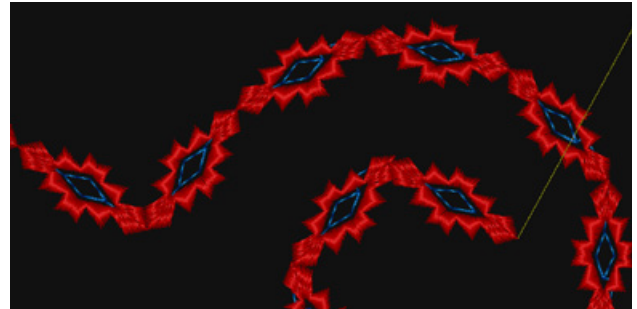


Fill Stitch

UNIQUE AND SMART PROGRAMS

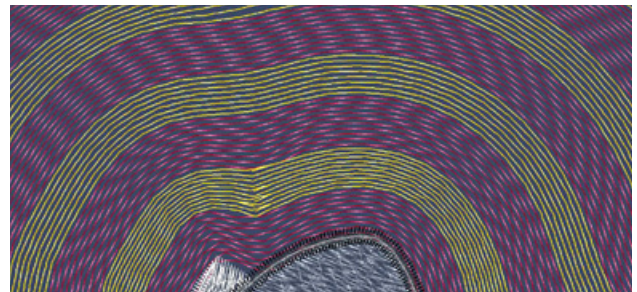
Chain up

Sequins, beads macros
or other stitch elements.



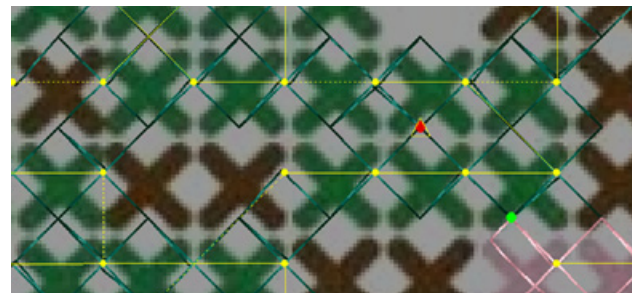
NEW - Curve Fill

Profit from our newest generation of Prog. 11 and fill
curved shapes with running lines.



Cross stitch

Imitate real cross stitches with a special automatic
program. Adjust the grid size at any time.



Cross ball

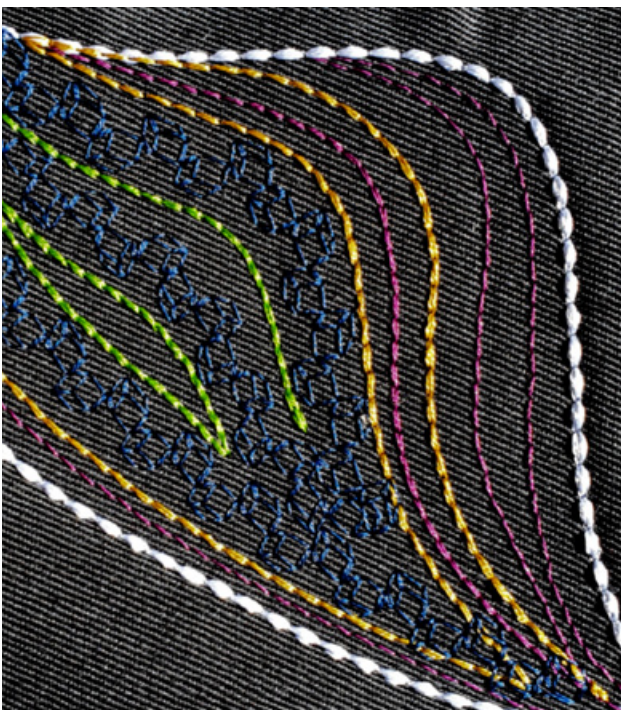
Create decorative cross ball stitches and add
unlimited parameter variations for complex effects.



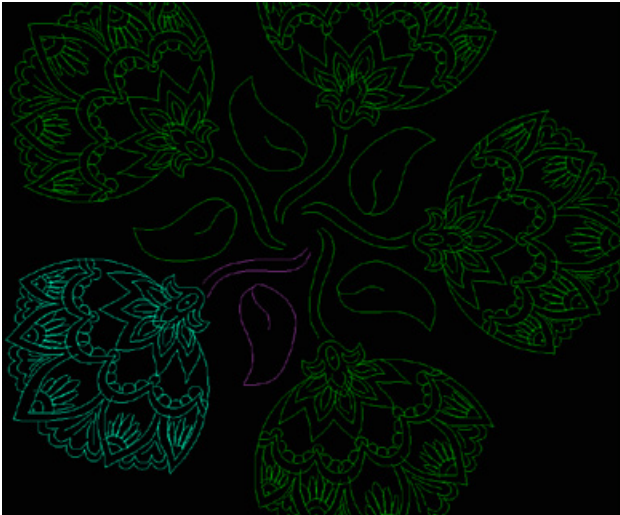
NEW - RUNNING LINE

Create running lines with branches and freely
define start and endpoint. With EPCWIN 7 you
can now set irregular stitch length for your
running lines and cut them at any desired
position so that separate parameters can be
assigned.

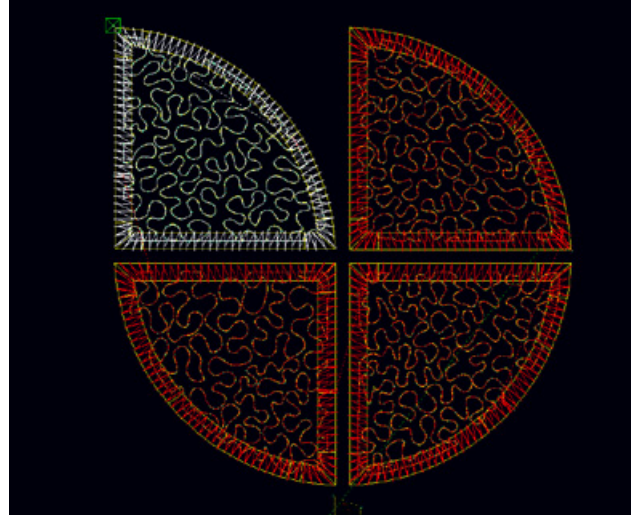
Stay flexible and convert fill stitch or satin
stitch to running lines for further editing and
parameter assignment.



Running Line



Interactive Repeat Function



Maze Fill

COMBINE DRAWING AND DIGITIZING

EPCWIN 7 comes with many new smart tools that can be used for drawing as well as digitizing that help you to make embroidery designs like never before!

INTERACTIVE REPEAT FUNCTION

Use the repeat function to create beautiful textile designs in seconds. Once you have created a repeat it stays active so lines can still be added or adjusted.

NEW - MAZE FILL

Inspired by Shuttle design tradition it is now possible to fill shapes with a continuous maze line. Add any kind of stitches such as macros, cords or beads for exciting designs.

NEW - SPIRAL FILL

Thanks to the brand new spiral fill it is possible to lay any shape into spirals. Creating designs for sequins, beads, cording or chain stitch will now be done in a few seconds!

ALIGNMENT TOOLS

Arrange your elements symmetrical or with fixed distances in reference to any preferred part of your designs.

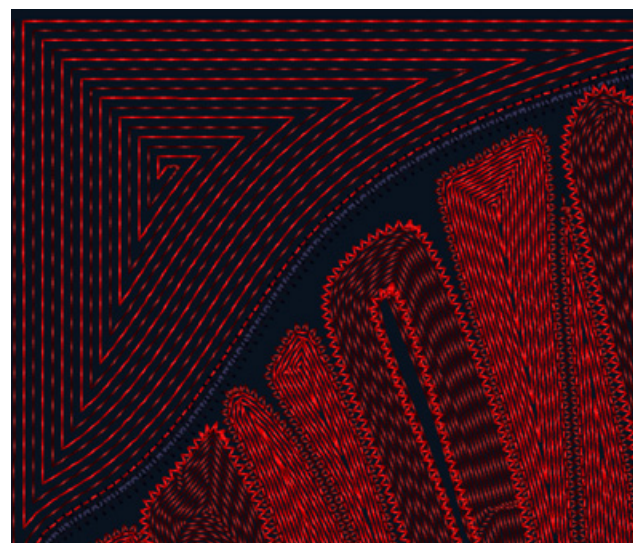
NEW - OFFSET FILL

If you want to place elements in parallels, that is also not a problem. Freely change distance and amount of parallels.

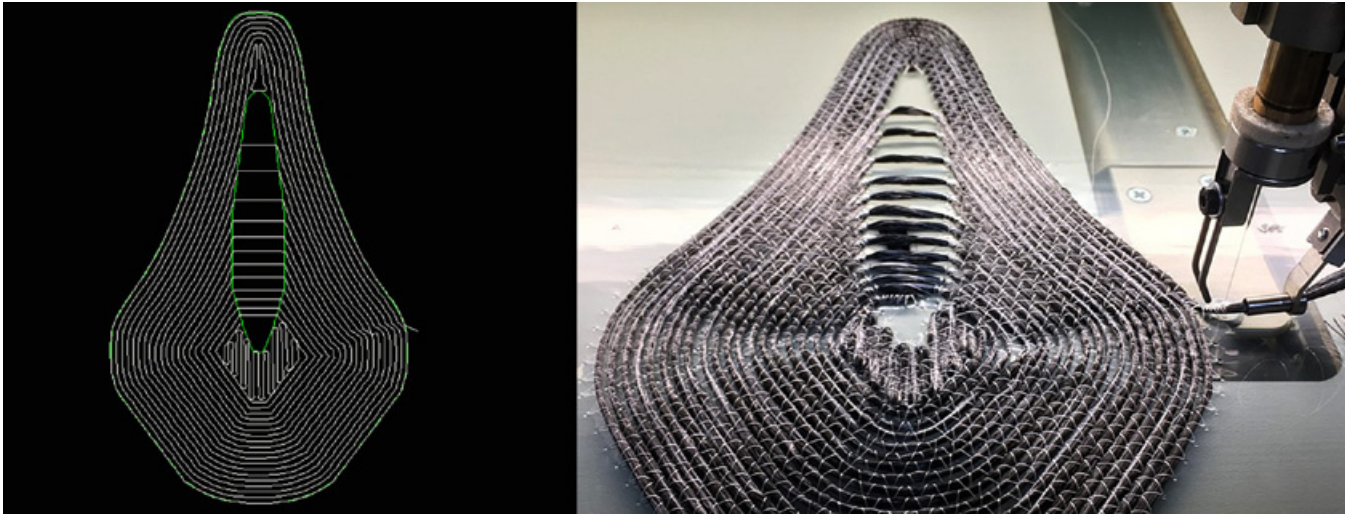
Why drawing automations?

Create fill areas in seconds and adjust size, distance or curves if you need the shapes for different embroidery projects.

These new drawing lines can then be integrated for sequins, cords, fill stitches or any stitch type you need.



Spiral Fill



Bike saddle - as technical drawing in EPCWIN and as a preform on the machine

EPCWIN AS A FULL CAD SYSTEM

EPCWIN contains a full CAD package dedicated and crafted specifically to the needs of the modern embroidery digitizer.

The EPCWIN digitizing CAD platform allows for vector line shape objects to be created, manipulated, and optimized within the digitizing program itself, eliminating the need for external CAD programs. These shapes interact natively with the punching and digitizing modes of the software allowing for seamless interaction of designed to digitized objects.

PRECISE SHAPES

Shapes such as circles, squares, spirals, and other heavily used primitives can immediately be created with a single click and tuned to the users demands. Additionally, more complex shapes such as spline lines, straight lines, and orthogonal lines can be used to be able to create more advanced digitizing drawings. These additional CAD options allow for easy digitizing of logos with high customization and quality in mind.

NEW - LINE OPTIMIZATION

Prepare external vector data for your embroidery process. Lines can be quickly connected in order to simplify the digitizing requirements into more simple shapes. Also convert a group of points from curves to corners or inverse. A perfect straight lines requires not more than 2 points – with EPCWIN 7 it is now possible to delete a group of points.

WHY RECREATE WHEN YOU CAN JUST FIX?

Using EPCWIN as a CAD system as well as an embroidery punching system allows for faster design updates. In some other digitizing software, one must import the CAD work or vector lines from another external program into the digitizing program. This leaves the uncomfortable, and unprofitable, outcome that if a complex design is fundamentally changed, the program must be redigitized by reimporting the design from scratch.

In EPCWIN, the integrated CAD software allows for those vector lines and corresponding punch data to be immediately updated and altered quickly saving precious digitizing time.

MACHINE CONNECTION AND ZSK ATTACHMENTS

ZSK machines and ZSK digitizing software – all developed under one roof. This seamless connection between user, software and machine makes your production much more efficient and drastically minimized the chance of mistakes occurring.

ZSK POOL AND RINGBUFFER

Connect your design directory of EPCWIN directly to various machines via Ringbuffer and avoid downtime for loading the design.

After one design is finished, it will be deleted from the memory and automatically loads the next design.

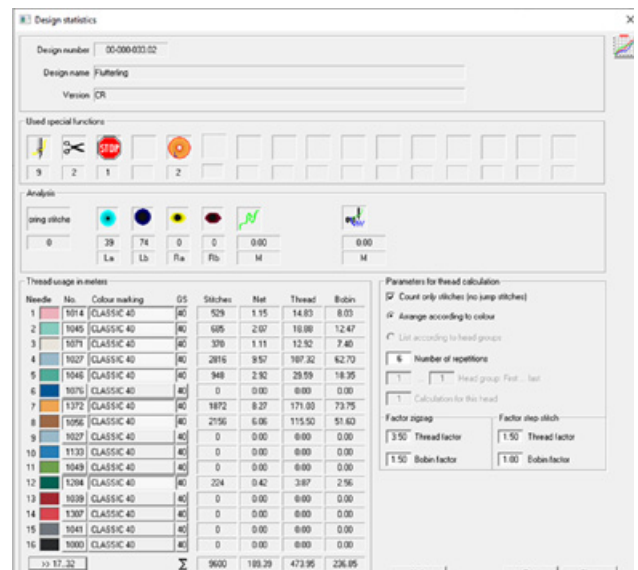
STATISTICS AND DESIGN INFO

Print all design data for a seamless process in your embroidery department. Add a barcode so that the design can be loaded directly from the network. Get an overview about run time on the machine and amount of thread or wire material being used in the design.

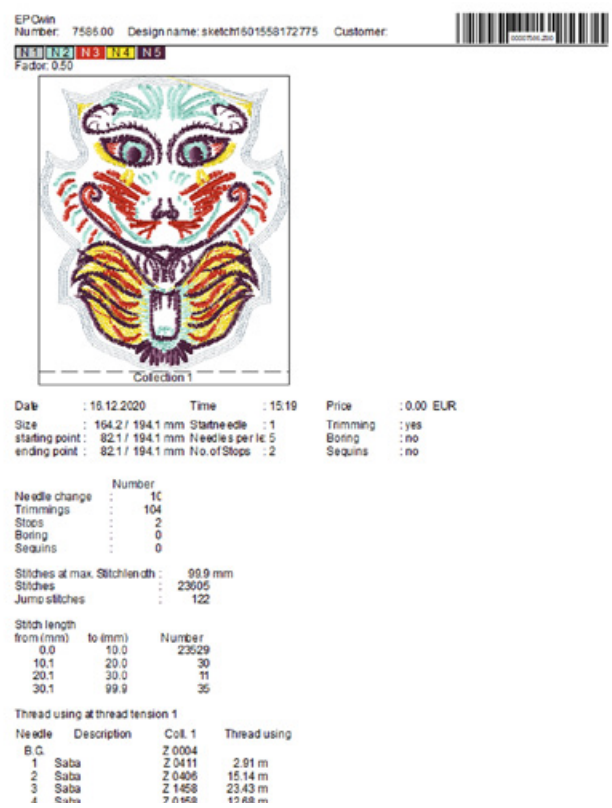
- Thread tables from all main manufacturers and amount of stitches per thread
- Amount of wire material, beads, sequins, etc. used in the design
- Design size and position of start/end point within the design field
- Thread consumption according to individual tension set ups
- Amount of stops, needle changes, trims etc. with each individual position
- Amount of material used for multi head machines
- ZSK machine list or individual machine list

PRINTING WITH BARCODE

Print your design information and add a barcode to speed up your process of loading your design from the network by simply scanning the barcode. This way no wrong design can be loaded for an order. The operator can also read the exact thread requirements for each project and has all collections on one print out.



Statistic and design Info



Printing with Barcode



New Function for Twin Sequin and Beads



Head Selection for Multihead Machines

HEAD SELECTION FOR MULTIHEAD MACHINES

Individual heads or groups of heads can be programmed within the design. They will then automatically turned on and off during the embroidery process without an operator being involved.

Reduce your production time and use the full capacity of your ZSK machine by making designs for your entire embroidery frame.

NEW - TWIN SEQUIN AND TWIN BEADS

The latest EPCWIN 7 allows you to fill areas with sequins or beads or place either of them along lines! You can choose between a spiral, regular or curvy fill for a rhythmic distribution or a casual distance for a beautiful, more natural finish.

BORER

Make unique designs especially for fashion and home textiles with the boring device. EPCwin fully supports the borer command and interactively visualizes the boring holes.

HAC

Avoid an enormous investment for a laser bridge and get the ZSK Hot Air Cutting Device instead. With EPCWIN you are able to switch off the needles while it is working so that the needle will not be unthreaded and can be activated again after the cutting is done.

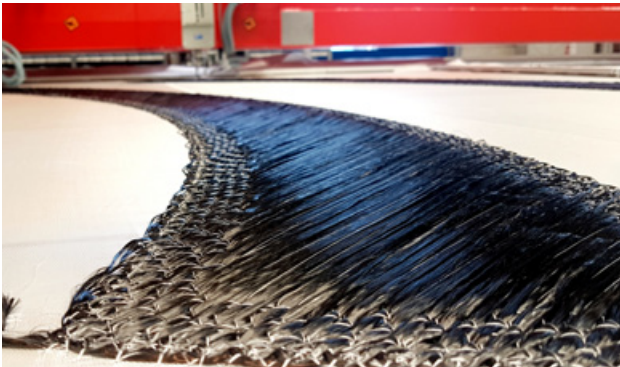


HAC- ZSK Hot Air Cutting Device

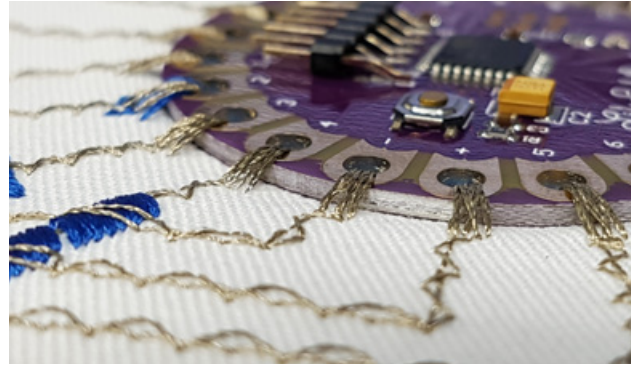
EPCWIN FOR TECHNICAL EMBROIDERY

Inspired by traditional embroidery techniques, the newest generation of EPCWIN offers the user a market leading range of smart tools for your smart textiles or TFP and TWP projects.

Make full use of your ZSK machine and save precious time on making high quality machine files. The added functionality in EPCWIN 7 further supports different technical requirements and requests made. Our customer's needs come first and the updated features are a direct reflection of that.



Large TFP parts made with fast fibre laying



Circuit board automatically conducted with conductive yarn

FAST LAYING (FOR BIGGER FIBRE AREAS)

When designing large embroidered tailored fibre placement parts, every stitch counts.

In fast fibre laying, you can select areas of your objects where you want another stitch length or fast laying for decreasing product manufacturing time. This allows you to place down more carbon per hour than ever before increasing efficiencies and decreasing embroidery cycle time.

DISPLAY ROTATION ANGLE GREATER THAN

A rotation angle tool has been included in EPCWIN 7 to help with monitoring unwind angles for wire or carbon fibre embroidery.

Excessive contra turns can be marked in colour so that you spot them straight away and avoid them. This tool drastically increases your run time on the machine and saves you time on design iteration between software and machine.

BALLOON TURN

Optimized edge behaviour for stiffer wire/carbon material in fill areas. Keep a higher density within your design while you extend the outside areas to not lose your shape through shrinkage.

NEW - COMFORT LINE SETTINGS

Using various stitch spacing is increasingly common in wire embroidery as well as composite embroidery. Using the new comfort line settings, strain relief can be set within the object by changing the stitch width at different locations on the comfort line. This feature allows for wire and fibre to be more tightly controlled throughout the design process. The new comfort line setting allows you to selectively increase the stitch density on that line.

NEW - FILL COMMANDS: MAZE AND SPIRAL FILL

Creating complex carbon fibre preforms requires a high level of tunability over the fibre placement path. Our new scripted programs allow for different mechanical structures to easily be created that were not able to be created prior.

The Maze and Spiral fill allow for EPCWIN to create radial reinforcement in your designs automatically opening up fast mechanical reinforcement for holes and other support composite structures.

We listen to the market and implement our customer's wishes.

At the end, that's what matters:
You need a professional tool
to do a professional job.



René Gotolle

ZSK Sales Manager
Technical Embroidery Systems

STORE YOUR COMPONENTS IN THE BLOCK LIBRARY (VECTOR DATA PLUS EMBROIDERY)

Have you ever created an experiment to test different lock stitches for carbon fibre to optimize the speed to efficiency ratio for that fibre type? Well, now you can save this information into a block and use it in many other designs eliminating the future need to repeat that development again. Efficient use of blocks is the number one time saver for any technical embroidery customer.

Want to put the outline of a circuit board into your design? Use a block and it is finished. Want to put in LED sequins into your design and see where the components sit? Use a block and see immediately. Blocks are powerful time savers that can allow a team's common development to be used by all on the team simplifying R&D and allowing the whole team to learn from one person's studies.

WRITE AND READ MACHINE PARAMETERS TO DESIGN

Connect your machine parameters directly to your design. Set your parameters (Pressure foot height, Zig-Zag Stroke, pantograph stroke, etc.) in the EPCWIN software or read them in via USB/network from the T8 control unit. The experiences you have gathered in the machine can be assigned and saved directly to a design. Now the machine settings are always the same for each individual design so no variation occurs in the stitching process.

NEW - F12: SPECIAL FUNCTIONS FOR W- OR K-HEAD

- **Machine settings for individual design areas:** With this new feature, you can change the parameters for zigzag stitching in middle of your design on a particular stitch. Running a tight tail of carbon fibre towards the beginning of the design but want to open those stitches up for added mechanical properties in the middle? This can now be easily implemented with the new machine parameters special function. Each of these special K-- or W-head parameters can get a name and can be saved in library for quick future implementation for your TFP, TWP and TTP projects.
- **Rotary back:** With the new unwinding feature, you can select where in a W-head design the unwinding occurs. This can allow even more optimization in speed and machine throughput, while also allowing extreme control over the spring feeder tubes. You control the unwinding now.
- **Punch or Stamp device:** EPCWIN supports the command for punch devices that can be integrated to the newest generation of ZSK technical W-head machines. It can be controlled by using the function "Punch left / Punch right / Punch left + right"

EXTENDED EPCWIN OPTIONS

LET YOUR EPCWIN GROW WITH YOUR TASKS!

You are looking into further machine technologies for future project? EPCWIN offers numerous features that you can add to your current license.

SHUTTLE EMBROIDERY

In addition to multi-head embroidery EPCWIN also offers a full shuttle embroidery digitizing tool to make professional designs. Besides a large number of automatic programs for drilling, pulling or etching grounds and a detailed design info results in enormous time saving when drawing the design.

Import / export of shuttle embroidery format

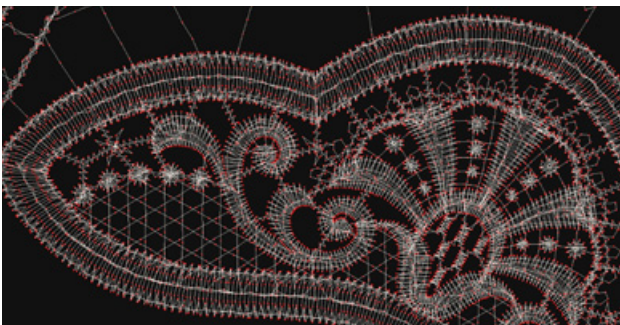
Benefit from a large selection of common shuttle machine formats. These can be read and translated to flatbed machine systems and output to your shuttle machines.

Special design head for shuttle embroidery

Set up each design to match the individual machine configurations. Also sort your designs by groups, base material, versions and other search terms.

Drawing programs

Create elaborate drawing grids for your embroidery application in seconds. Choose from a large selection of automatic programs and prepare your shuttle programs optimally. New features like a maze automation offers a variety complex design possibilities.



Shuttle Embroidery

CAMERA SOLUTION AND ZEPL

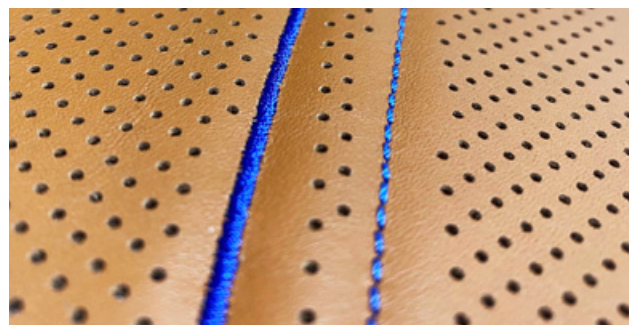
With our ZSK VISION SYSTEM for single-head embroidery machines, we offer a unique solution for placing designs on processed leather under consideration of variation in colour, perforation and shapes. The camera system helps you meeting a tolerance of approx. +/- 0.3 mm to position embroidery or quilting perfectly on your perforated leather compensating variations from laminating or punching processes and material shifting of during the embroidery process.

Let your design be smart and interactive

Thanks to strategical placement of camera check points before and during embroidery sections within the design this technology spots movement of the perforation design and adjusts shape, size and location of individual embroidery elements accordingly.

Generate ZEPL file with EPCWIN

This market leading feature is only available at ZSK and requires EPCWIN 7 to program the individual embroidery elements and their camera check points. Data written in the new ZSK file format ZEPL compares the location of the perforation holes with the technical drawing of where they supposed to be.



Precise leather embroidery with ZSK Vision System

EPCWIN TRAINING OPTIONS

GET THE MOST OUT OF EPCWIN

Even the best designed and thought out program is measured by its benefits. An important point is the ability to use the program successfully. That is why we go to great lengths to help you learn the program.

ONLINE POSSIBILITIES

MY.ACADEMY

MY.ZSK is a new comprehensive learning platform on all EPCWIN functions. It also offers support for most issues relating to digitization for ZSK special machines.

ZSK DIGITIZING ACADEMY

The ZSK DIGITIZING ACADEMY is a YouTube™-based self-learning opportunity that is open to everyone.

The video clips provide helpful tips and instructions for beginners and advanced users.

To date, the videos have successfully supported many users in self-study on EPCWIN.

Visit: www.youtube.com/ZSKDigitizingAcademy

INDIVIDUAL ONLINE TRAINING

You want to specifically improve your skills in EPC or a particularly tricky project brings you to your limits and you need short-term help?

For a quick support, we offer online training courses with our experienced software trainers. Here your individual questions will be answered intensively and- as far as possible- practical help will be provided for your embroidery projects.

ZSK ACADEMY

For ZSK STICKMASCHINEN, spreading the creative and technological possibilities of embroidery is an affair of the heart. We have long been cooperating with many technical schools and universities around the world.

To best support these forms of education, we have created an e-learning platform based on MOODLE called ZSK ACADEMY.

ON LOCATION

ZSK training sessions can take place on site at your company or at the ZSK Training Center Krefeld, Germany and the ZSK Research and Training Center Seattle, WA, USA.

CLASSROOM TRAINING

EPCWIN seminars are offered from basic get-to-know the program trainings, up to advanced techniques for customized applications.

We provide courses for individuals and corporate teams in theory and practice from 1 to 5 days.

SPECIAL - TECHNICAL EMBROIDERY

Many companies are breaking new ground when they decide to use EPCWIN and ZSK technical embroidery solutions.

To be successful within the technical embroidery field and EPCWIN we offer additional courses for interested companies:

- Textile Engineering Training
- Machine Operation Training
- Machine Attachment Training
- Machine Maintenance Training

CONTACT

For further information about the ZSK training possibilities or specific booking inquiries please send an email to:

software@zsk.de

We will contact you as soon as possible!

FEATURES AND FUNCTIONALITY

DRAWING

Geometric shapes with numeric definition

Smart offset function

Interactive Spiral fill

Maze function

Interactive repeat function

Special drawing automations for Shuttle embroidery

Spline function

Cutting multiple lines or a single line

Insertion/deleting and changing of drawing points

Connection multiple lines to a single line

Conversion of between corner and curve point

Arrangement tools for symmetric designs

Conversion of punch data into drawing lines

Export of drawing data as vector files

Copy and mirror function

Segmentation of lines for fixed distances or line centre points

Drawing tools for shuttle designs

Fast change between curves and edges

Connect multiple lines to a single line

Optimize lines automatically

Creation of geometries with adjustable values

Rotation, compression, stretching and mirroring of drawing or digitizing data

Help functions such as grid, horizontal and vertical lines or comment texts

Component library

Freehand curves in different levels of precision

Selection of different automatic drawing tools

Division into layers by colour assignment

DIGITIZING

Manual stitches with fixed angle or length

Automatic programs for all common stitch types

Satin stitch variations for complex stitch styles

Sequin and bead fill program

Cross ball function

Repeat function for punch data

Preview of stitch effect in all parameter fields

Interactive repeat drawing tool

Head selection for multi head machines

OPS2 Camera System support

Interlocking areas of fill stitches

Fading density for fill and satin stitches

Choose between centre line, contour or fill underlay

Set density between 1 and max. 680 inc

Automatic density adjustment acc. to stitch length

Stencil and macro function for fill stitches

Casual or regular fraying edge for satin and fill stitch

Place embroidery elements on lines or in circles

Running line with branches that can have separate settings

Bean stitch or triple stitch for running line

Special edge types for optimum technical embroidery or cording designs

Twin bead and twin sequin command

Cross stitch program with individual grid size

TrueType Font Converter and Editor

Over 50 pre-installed ready to stitch fonts

Place lettering onto line

Automatic satin frames

Programming for ZSK K, W and standard embroidery thread

EDITOR

Editing of individual stitches and machine commands

Editing of automatic program settings or outlines with recalculation

Film function for rearranging order of embroidery

Global editing of design elements or the entire design

Insertion or deleting of special functions, stitches or automatic programs

Grouping of elements by markers

Arrangement tools

Automatic centre points or frames of design elements

Global exchange of special machine commands

Automatic start/end point adjustment of individual elements for optimum running

Cut running lines for separate parameter settings

3 point rotation of drawing and embroidery elements

DESIGN MANAGEMENT

ZSK machine list to assign design to machine

Write machine parameters to designs

Layer View to filter individual drawing or embroidery elements

Colour tables of all common thread manufacturers

Filter function over various directories

Design history for tracing back on multiple users per designs

Statistics about thread/wire consumption, special functions, stitch count

Print statistics and design lists

Loading designs via barcode

EPCwin7 Ringbuffer and machine networking

Set up own colour tables

Auto Fill assistant to apply tags/customers/etc. to several files at once

Choose between individual list view or pictogram view

Separate Block library – locally stored or global access

GENERAL

Synchronize parameters, stitch sequences and stencils for multiple work stations

File formats: .z00, .dsz, .dst, .dsb, .exp, .pat, .zepl

Import vector Formats: .svg, .dxf, .wmf,

Import pictures: .jpg, .bmp, .pdf

Schiffli Formats: .ncs, .sas, .mst, .pat, .dat

System languages: German, English, Italian, Spanish, Turkish, Chinese, Portugues, Korean

Minimum System requirements: Windows 7 or newer



ZSK STICKMASCHINEN

Magdeburger Str. 38- 40

47800 Krefeld

Germany

Online: www.zsk.de

email: software@zsk.de

Phone: +49 2151 444 0



facebook.com/ZSK.Stickmaschinen



youtube.com/ZSKDigitizingAcademy



instagramm.com/zsk_stickmaschinen

ZSK - DIE STICKMASCHINE.