

## ZSK STICKMASCHINEN - Digitizing Software

Your contact: Ms. Britta Sanders

E-Mail: [software@zsk.de](mailto:software@zsk.de)

# Update EPCwin 7.1

## What's new?

### Tool for combining stitch files

Save precious time by using "keep needle colours" when you combine designs with different colours on the same needle.

### New ZEPL functions

Make your ZEPL designs even smarter with new point types and extended design statistics.

### Enhanced layout

The clearer side assistant and new shortcuts make working with EPCwin much easier, especially for beginners or those with less experience.

### .svg format

load in your designs as .svg format, profit from even more freedom in your work preparation.

## Further improvements

### Layout

- Improved user interface -> colour highlighted side assistant
- Icons of special function in work field (stop sign, needle, etc. instead of yellow triangle)
- Ongoing improvement of scaling especially on newer PC screen resolutions
- Improved layout of side assistant

### Design head

- Addition of various colour cards
- Extended needle/stop assignment, possible to enter thread trims if you stay on current needle
- Optimizing thread cones: tool for used needles in a design (Figure 1)

### Drawing

- free definition of line opening of closed drawing shapes
- Import of .svg Format
- Improved line quality of imported vector files



Needle colours			
Needle	No.	Colour marking	GS
1	1025	Gold	40
2	1743		40
3			
4	1150	CLASSIC 40	40
5	1093		40
6	1372		40
7	1195		40
8	1212		40
9	1251		40
10	1177		40
11	1298		40
12	1054		40
13	1304		40
14	1182		40
15	1137		40
16	1388		40

Figure 1

## Editor

- Edit special function: new dialog, for easier handling (Figure 2)
- Combination of two embroidery files: New dialog – keeping colours or needle number? (Figure 3)

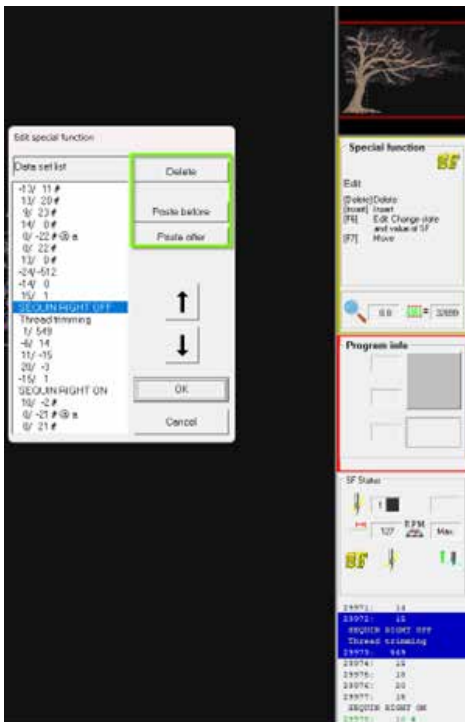


Figure 2



Figure 3

## Automatic programmes

- Run stitch (Prog. 20): Automatic query whether end point should be relocated as soon as number of paths has been changed in parameters
- Improved calculation of end point location when editing run stitch (Prog. 20)
- Improved calculation of stitch direction in satin stitch program (Prog. 1)

## ZEPL

- Extension of No. of possible ZEPL parts to 1000
- Adjustment of ZEPL points if design is mirrored or rotated
- Definition of new ZEPL type – Type 17
- Definition of new ZEPL type – Type -1
- “Repeat view” for ZEPL parts: if they all have the same design part, they are shown all at once
- ZEPL statistics: Design head shows No. of ZEPL check points for approx. Calculation of run time
- ZEPL statistics: Design head shows total stitch count of a ZEPL file for approx. Calculation of run time
- Deleting of individual ZEPL check points
- Export of ZEPL designs into a single file automatically
- Various improvements

## General

- Further improvements and stabilized performance!